

**Exam : Juniper JN0-522**

**Title : FWV,Associate(JNCIA-FWV)**

**Version : Demo**

## Important Note, Please Read Carefully

### Other VisualExams products

[All visualexams IT Exam Products](#)

### Our products of Offline Testing Engine

Use the offline Testing engine product to practice the questions in an exam environment.

Build a foundation of knowledge which will be useful also after passing the exam.

[visualexams Testing Engine](#)

### Latest Version

We are constantly reviewing our products. New material is added and old material is revised. Free updates are available for 90 days after the purchase. You should check your member zone at VisualExams and update 3-4 days before the scheduled exam date.

Here is the procedure to get the latest version:

1. Go to <http://www.visualexams.com/>
2. Log in the **User Center**
3. The latest versions of all purchased products are downloadable from here. Just click the links.

### Feedback

If you spot a possible improvement then please let us know. We always interested in improving product quality.

Feedback should be send to [Visualexams@hotmail.com](mailto:Visualexams@hotmail.com). You should include the following: Exam number, version, page number, question number, and your login Account.

Our experts will answer your mail promptly.

### Explanations

This product does not include explanations at the moment. If you are interested in providing explanations for this exam, please contact [Visualexams@hotmail.com](mailto:Visualexams@hotmail.com).

### Features

- Comprehensive questions with complete details
- Instant Downloadable in PDF form.
- Verified Answers Researched by Industry Experts
- Questions accompanied by exhibits.
- Drag and Drop questions as experienced in the Actual Exams.
- These questions and answers are backed by our GUARANTEE.
- Questions updated on regular basis.
- Like actual certification exams our product is in multiple-choice questions (MCQs)

**Commitment to Your Success: At VisualTestExam.com, we are committed to you ongoing success. Our exams and questions are constantly being updated and compared to industry standards.**

Want to earn a Microsoft certification like MCSE, MCSE 2003, CCNA, CCNP? Thinking about getting an A+ or CCSP?

A, CCSP or Network+ Certification with less effort and time. You will be astonished at the theoretical and practical knowledge you will acquire in such a short period of time using our Certification Training Products. Our Study material will enable you to pass your Microsoft, Your Cisco and any other certification on the very first attempt.

## **Guarantee**

Visualexams provides the most competitive quality of all exams for the customers, we guarantee your success at the first attempt with only our Certification Question&Answers, if somehow you do not pass the exam at the first time, we will not only arrange FULL REFUND for you, but also provide you another exam of your claim, ABSOLUTELY FREE!

1. Which statement is correct regarding administrator privileges?

- A. Any Administrator can change their privileges on an as-needed basis
- B. Administrator privileges can only be established and changed by the Root Administrator
- C. Administrator privileges can be established and changed by the Root and All-privilege Administrator
- D. Administrator privileges can only be established by the Root and can be changed by the Root and All-privilege Administrator

**Answer: B**

2. Which statement best describes the 'config rollback' feature?

- A. Once the 'config rollback' feature is enabled; it allows the administrator to re-apply a previously saved configuration file from Flash
- B. The 'config rollback' feature is enabled by default; it allows the administrator to re-apply a previously saved configuration file from Flash
- C. Once the 'config rollback' feature is enabled; it allows the administrator to re-apply a locked configuration file from a separate area in Flash
- D. Once the 'config rollback' feature is enabled; it allows the administrator to revert to the prior ScreenOS image in the event an upgrade operation aborts
- E. Once the 'config rollback' feature is enabled; it allows the administrator to revert to the prior ScreenOS image or configuration file in the event an upgrade operation aborts

**Answer: C**

3. What are two benefits of configuring a ScreenOS device in transparent mode? (Choose two.)

- A. There is no need to reconfigure the IP addresses of routers or protected servers.
- B. There is no need to create MIPs or VIPs for incoming traffic to reach protected servers.
- C. Policies are easier to create since you do not have to include source and destination IP addresses.
- D. The product can support more VPNs and obtain greater throughput because there is less overhead to manage.

**Answer: AB**

4. What are the advantages of multiple virtual routers on a NetScreen device?

- A. It creates more secure routing tables that are simpler to administer
- B. It reduces packet-forwarding overhead associated with layer-3 operations
- C. It increases the number of possible routing table entries per NetScreen device
- D. It makes it possible to forward traffic between security zones without a policy lookup

**Answer: A**

5. What is the default mode for an interface in the trust zone?

- A. NAT
- B. route
- C. Layer 2
- D. Layer 3
- E. transparent

**Answer: A**

6. The CLI command, 'set policy from untrust to trust "ANY" "ANY" "ANY" Permit' is the default configuration policy on which NetScreen device?

- A. NetScreen 500
- B. NetScreen-5XT
- C. NetScreen-5XP
- D. None of the above
- E. NetScreen-200 series

**Answer: D**

7. Which statement about multi-cell policies is true?

- A. You can apply the negate option to services.
- B. You can apply the negate option to a source address.
- C. You can only use the WebUI to configure multi-cell policies.
- D. You can add up to 32 different addresses or services per cell.

**Answer: B**

8. Click the Exhibit button.



What does this icon indicate?

- A. Logging is enabled on a policy.
- B. Counters are enabled on a policy.
- C. Scheduling is enabled on a policy.
- D. Authentication is enabled on a policy.

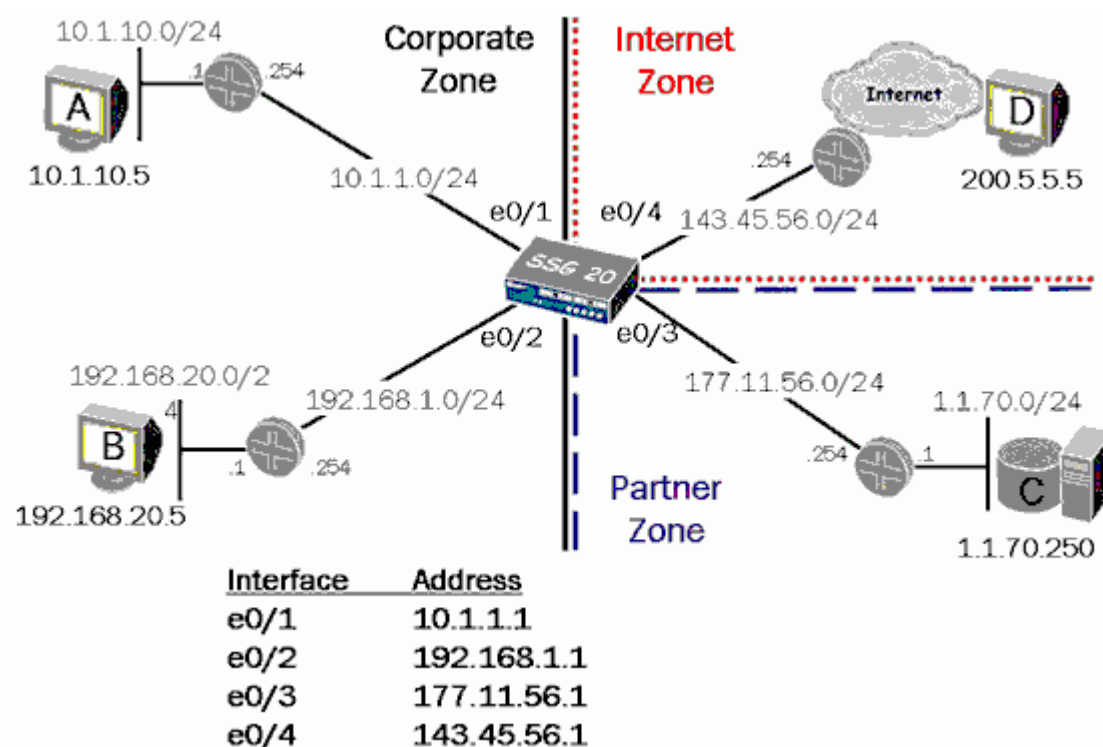
**Answer: B**

9. Which form of NAT performs bi-directional translation?

- A. VIP
- B. MIP
- C. DIP
- D. NAT-dst
- E. NAT-src

**Answer: B**

10. Click the Exhibit button.



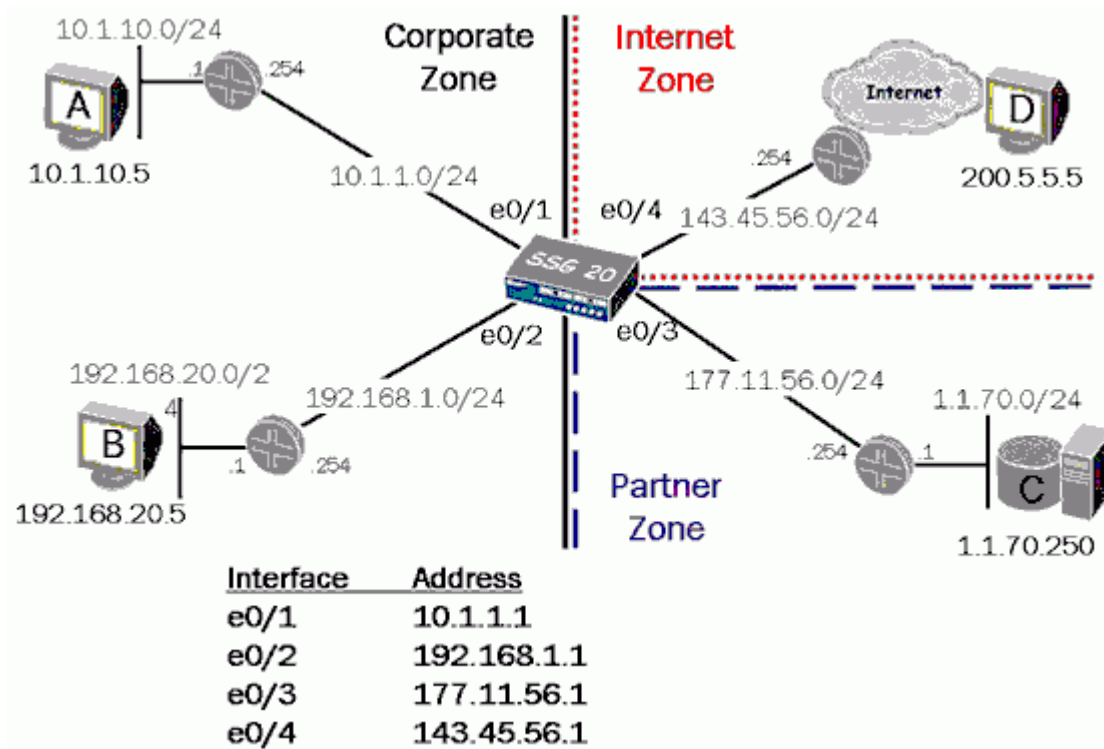
In the exhibit, you configure NAT-src to translate traffic from the Corporate zone to the Internet zone and do not specify a DIP.

Which address will be used as the outbound source address?

- A. 143.45.56.1
- B. 143.45.56.254
- C. NAT-src requires a DIP
- D. the original source address

**Answer: A**

11. Click the Exhibit button.



In the exhibit, on which interface would you configure a VIP for translating inbound traffic destined for the partner servers?

- A. E1
- B. E2
- C. E7
- D. E8
- E. You cannot use a VIP in this environment; a VIP must be configured in the Untrust zone.

**Answer: E**

12. Which two statements are accurate about tunnel mode? (Choose two.)

- A. In tunnel mode the IPSec header precedes the original IP header.
- B. Tunnel mode is required in IPSec networks where ESP packets are used.
- C. Tunnel mode is the default mode of operation for IPSec in ScreenOS devices.
- D. Tunnel mode can only be used when operating between IPSec security gateways.

**Answer: AC**

13. Which command is used to avoid IP fragmentation when configuring IPSec on a ScreenOS device?

- A. set flow
- B. set tcp-mss flow
- C. set flow tcp-mss
- D. set mss-flow size

**Answer: C**

14. Tunnel binding is accomplished during which part of the VPN configuration process?

- A. Phase 1
- B. Phase 2
- C. Route Creation
- D. Replay protection
- E. Tunnel Interface Creation

**Answer: B**

15. By default, from which hardware component is the startup copy of the ScreenOS loaded?

- A. ROM
- B. NVRAM
- C. TFTP server
- D. Internal Flash
- E. PCMCIA Card

**Answer: D**

16. Using the CLI, if the startup copy of the ScreenOS on a NS-204 is corrupted, from which two (2) alternate locations can an image be loaded?

- A. ROM
- B. TFTP server
- C. Internal Flash
- D. PCMCIA Card
- E. Compact Flash Card

**Answer: BE**

17. By default, from which hardware component is the startup copy of the ScreenOS loaded?

- A. NVRAM
- B. TFTP server
- C. internal flash
- D. PCMCIA card

**Answer: C**

18. Using the CLI, if the startup copy of the ScreenOS is corrupted, from which location can an image be loaded?

- A. TFTP server
- B. internal flash
- C. PCMCIA card
- D. Compact Flash Card

**Answer: A**

19. In the packet flow decision process, which pair identifies interzone traffic?

- A. source and destination MAC
- B. source and destination interface
- C. source and destination TCP port
- D. source and destination IP address

**Answer: B**

20. A ScreenOS firewall has one interface in the user zone and one interface in the servers zone. Both interfaces are addressed and active. The configured policy allows user traffic from the user zone to the FTP server in the servers zone, but the traffic does not cross the firewall from the client to the server.

What is the most likely problem with the firewall?

- A. The ScreenOS firewall has no physical connection to the FTP server.
- B. The ALG option on the ScreenOS firewall has not been enabled for FTP traffic.
- C. The ScreenOS firewall does not have a route defined to the FTP server's subnet.
- D. The ScreenOS firewall does not have a route defined to the FTP client's subnet.

**Answer: C**

Visualexams.com was founded in 2006. The safer,easier way to help you pass any IT Certification exams . We provide high quality IT Certification exams practice questions and answers(Q&A). Especially Adobe, Apple, Citrix, Comptia, EMC, HP, HuaWei, LPI, Nortel, Oracle, SUN, Vmware and so on. And help you pass any IT Certification exams at the first try.

Web site: <http://www.visualexams.com>

You can reach us at any of the email addresses listed below.

E-Mail: [visualexams \(at\) hotmail.Com](mailto:visualexams@hotmail.com)