

Exam : Foundry Networks FN0-405

**Title : Foundry Networks Certified
Network Professional**

Version : Demo

Important Note, Please Read Carefully

Other VisualExams products

[All visual exams IT Exam Products](#)

Our products of Offline Testing Engine

Use the offline Testing engine product to practice the questions in an exam environment.

Build a foundation of knowledge which will be useful also after passing the exam.

[visual exams Testing Engine](#)

Latest Version

We are constantly reviewing our products. New material is added and old material is revised. Free updates are available for 90 days after the purchase. You should check your member zone at VisualExams and update 3-4 days before the scheduled exam date.

Here is the procedure to get the latest version:

1. Go to <http://www.visual exams.com/>
2. Log in the **User Center**
3. The latest versions of all purchased products are downloadable from here. Just click the links.

Feedback

If you spot a possible improvement then please let us know. We always interested in improving product quality.

Feedback should be send to Visual exams@hotmail.com. You should include the following: Exam number, version, page number, question number, and your login Account.

Our experts will answer your mail promptly.

Explanations

This product does not include explanations at the moment. If you are interested in providing explanations for this exam, please contact Visual exams@hotmail.com.

Features

- Comprehensive questions with complete details
- Instant Downloadable in PDF form.
- Verified Answers Researched by Industry Experts
- Questions accompanied by exhibits.
- Drag and Drop questions as experienced in the Actual Exams.
- These questions and answers are backed by our GUARANTEE.
- Questions updated on regular basis.
- Like actual certification exams our product is in multiple-choice questions (MCQs)

Commitment to Your Success: At VisualTestExam.com, we are committed to you ongoing success. Our exams and questions are constantly being updated and compared to industry standards.

Want to earn a Microsoft certification like MCSE, MCSE 2003, CCNA, CCNP? Thinking about getting an A+ or CCSP?

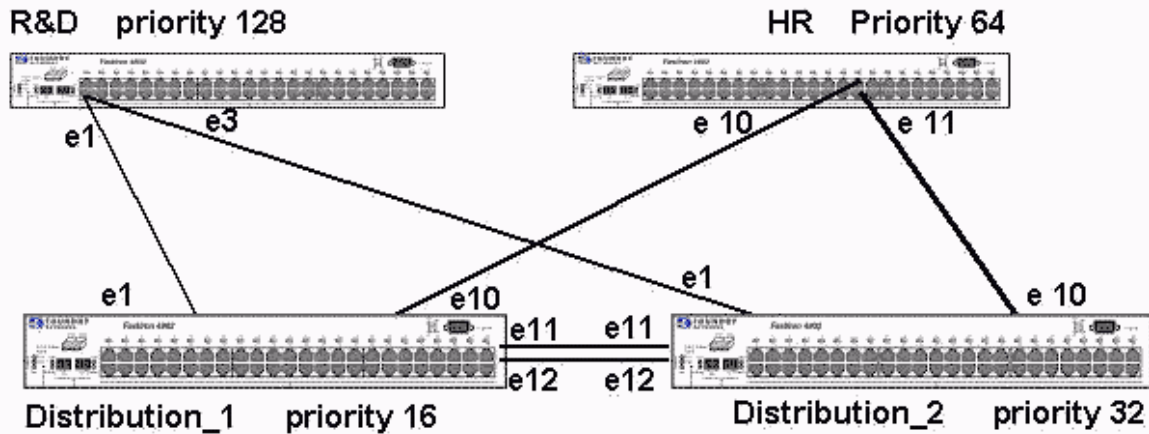
A, CCSP or Network+ Certification with less effort and time. You will be astonished at the theoretical and practical knowledge you will acquire in such a short period of time using our Certification Training Products. Our Study material will enable you to pass your Microsoft, Your Cisco and any other certification on the very first attempt.

Guarantee

Visualexams provides the most competitive quality of all exams for the customers, we guarantee your success at the first attempt with only our Certification Question&Answers, if somehow you do not pass the exam at the first time, we will not only arrange FULL REFUND for you, but also provide you another exam of your claim, ABSOLUTELY FREE!

1. Click the Exhibit button. Which bridge or bridges in Figure 11 will be a Non-Designated Bridge?

Figure 11



- A. R&D
- B. HR
- C. Distribution_1
- D. Distribution_2

Answer: AB

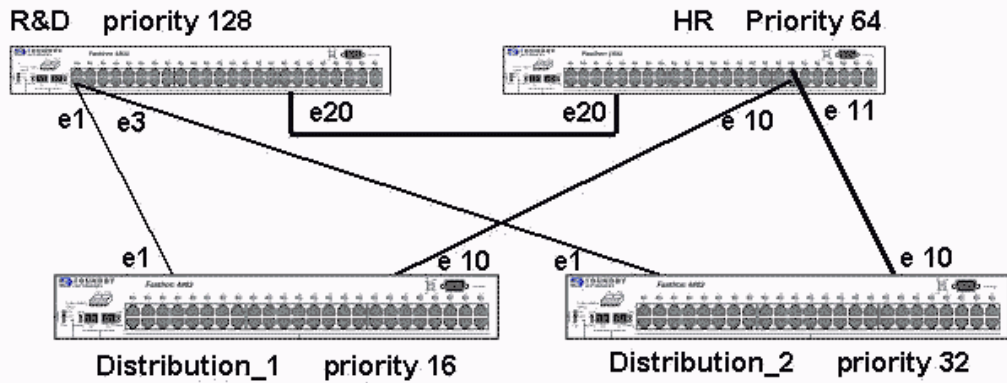
2. Which of the following would be used to apply the same policies to a group of BGP neighbors?

- A. route-reflector group
- B. Community group
- C. Confederation group
- D. Peer group

Answer: D

3. Click the Exhibit button. Which port or ports in Figure 10 will be blocked?

Figure 10

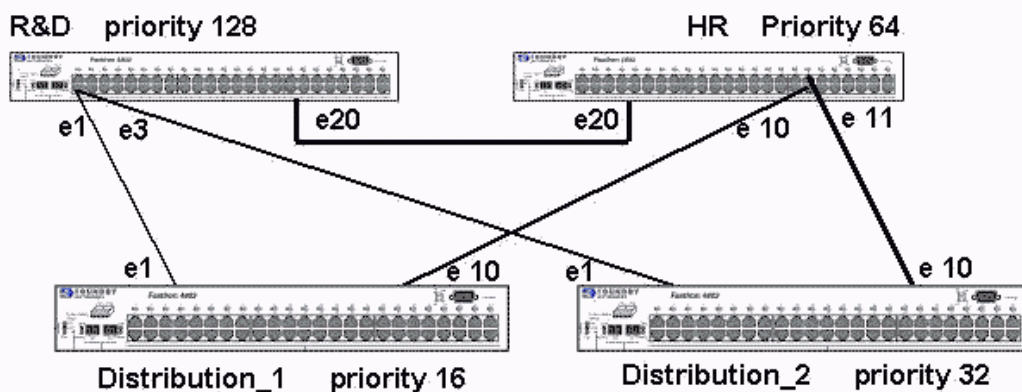


- A. R&D ?e3
- B. R&D ?e1
- C. R&D ?20
- D. HR ?e10
- E. HR ?e11
- F. HR ?e20
- G. Distribution_2 ?e10
- H. Distribution_2 ?e1

Answer: CH

4. Click the Exhibit button. Which bridge in Figure 10 will be a Non-Designated Bridge?

Figure 10



- A. R&D
- B. HR
- C. Distribution_1
- D. Distribution_2

Answer: D

5. Click the Exhibit button. Which port or ports in Figure 11 will be blocked?

Figure 10

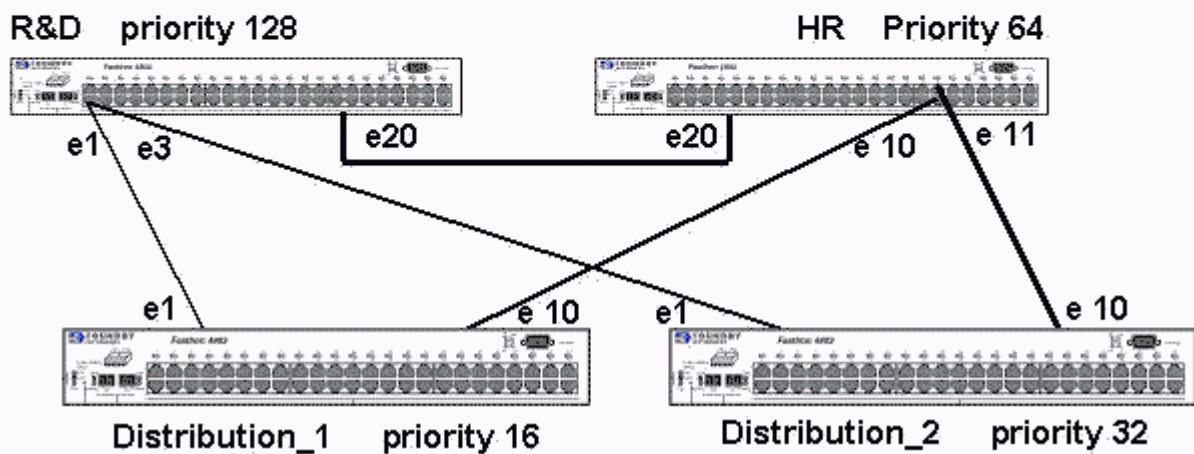
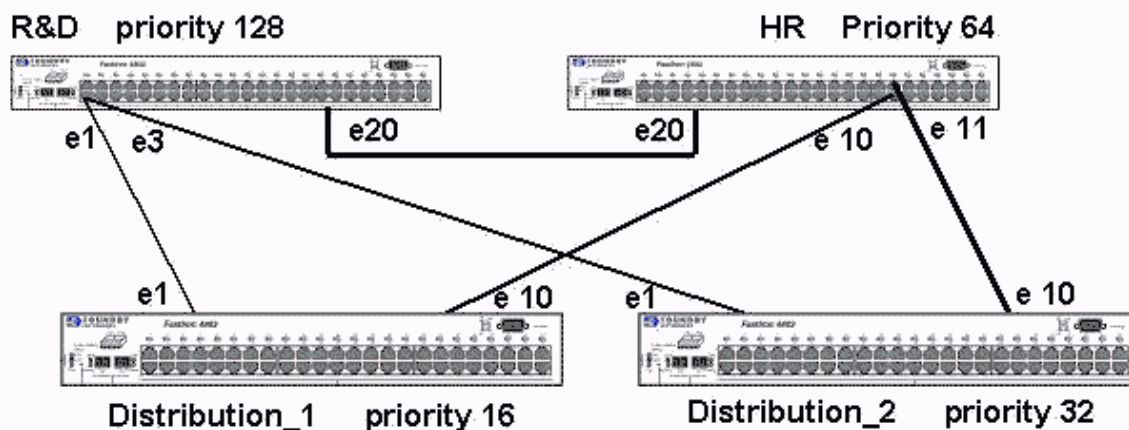


Figure 10



- A. R&D ?e3
- B. R&D ?e1
- C. HR ?e10
- D. HR ?e11
- E. Distribution_2 ?e10
- F. Distribution_2 ?e1

Answer: AD

6. Router pringfield?has three iBGP peers: Router omer? Router arge? and Router aggie? Routers Homer, Marge, and Maggie are advertising the Router ?pringfield?has three iBGP peers: Router ?omer? Router ?arge? and Router ?aggie? Routers Homer, Marge, and Maggie are advertising the same destination networks. Router Homer announces routes with the default local preference. Router Marge announces the same routes with a local preference of 200. Router Maggie announces the same routes with a local preference of 1. Which path does Router Springfield take?

- A. Router Homer
- B. Router Maggie
- C. Router Marge
- D. not applicable, because local preference only applies to ebgp peers
- E. not applicable, because local preference only applies to local router

Answer: C

7. A change in a route state, from up to down or down to up is called? A change in a route? state, from up to down or down to up is called?

- A. route dampen
- B. port flap
- C. route flap
- D. port dampen

Answer: C

8. What cli command shows the flap dampening statistics?

- A. show ip bgp summary
- B. show ip bgp neighbor <ip addr>; flap-summary
- C. show ip bgp neighbor <ip addr>; flap-statistics
- D. show ip bgp neighbor <ip addr>; route-flap

Answer: C

9. What is the BGP4 state called when the router is waiting to start the BGP4 process?

- A. Admin
- B. Connect
- C. Active
- D. Idle
- E. Confirm
- F. Established

Answer: D

10. Click the Exhibit button. What does the ??in the status field of network 204.17.220.0/24 indicate?

```
BigIron# show ip bgp flap-statistics
Total number of flapping routes: 414
  Status Code >:best d:damped h:history *:valid
  Network          From           Flaps Since      Reuse      Path
h> 192.50.206.0/23  166.90.213.77  1      0 :0 :13 0 :0 :0  65001 4355 1 701
h> 203.255.192.0/20 166.90.213.77  1      0 :0 :13 0 :0 :0  65001 4355 1 7018
h> 203.252.165.0/24 166.90.213.77  1      0 :0 :13 0 :0 :0  65001 4355 1 7018
h> 192.50.208.0/23  166.90.213.77  1      0 :0 :13 0 :0 :0  65001 4355 1 701
h> 133.33.0.0/16    166.90.213.77  1      0 :0 :13 0 :0 :0  65001 4355 1 701
*> 204.17.220.0/24  166.90.213.77  1      0 :1 :4  0 :0 :0  65001 4355 701 62
```

- A. This is the best route to use
- B. This route is currently dampened and is unusable
- C. Has a history of flapping and is unreachable now
- D. Has a history of flapping but is currently usable

Answer: D

11. Which of the following are advantages of Peer Groups? Choose all that apply.

- A. Allows resetting neighbor sessions on a Peer Group basis
- B. Simplifies neighbor configuration

- C. Route updates from one EBGP neighbor in a peer group can be passed to other EBGP neighbors in the same peer group
- D. Conserves memory

Answer: ABD

12. What is the process of artificially lengthening the AS-Path called?

- A. AS-Path pre-pending
- B. AS-Path appending
- C. AS-Path filtering
- D. AS-Path extension

Answer: A

13. What parameter specifies the AS the remote neighbor is in?

- A. prefix-list-as
- B. remote-as
- C. remote-neighbor-as
- D. remote-route-as

Answer: B

14. Click the Exhibit button. Is the BGP session with Neighbor 161.69.18.1 an IBGP session or a EBGP session?

```
ISPWan1(config-bgp-router)#show ip bgp summary
BGP4 Summary
Router ID: 161.69.17.1  Local AS Number : 100
Confederation Identifier : not configured
Confederation Peers:
Maximum Number of Paths Supported for Load Sharing : 1
Number of Neighbors Configured : 2
Number of Routes Installed : 0
Number of Routes Advertising to All Neighbors : 0
Number of Attribute Entries Installed : 0
Neighbor Address  AS#  State  Time    RtRcv RtAcpt RtSent RtToSend
161.69.15.2      10  ACTIV  0h 0m 15s  0     0     0     0
161.69.18.1      100 CONN   0h 0m 9s   0     0     0     0
```

- A. EBGP session
- B. IBGP session

Answer: B

15. Based on the following prefix list statement, which of the routes will be permitted and denied? ip

prefix-list List_B permit 169.51.0.0/16 ge 20 1) 169.51.6.0/24 2) 169.51.128.0/18 3) 169.51.16.0/20 4) 169.51.64.0/19

- A. 1=permitted, 2=permitted, 3=permitted, 4=denied
- B. 1=denied, 2=permitted, 3=denied, 4=permitted
- C. 1=permitted, 2=denied, 3=permitted, 4=denied
- D. 1=permitted, 2=permitted, 3=denied, 4=denied

Answer: C

16. BGP routes only propagate between Autonomous Systems.

- A. T
- B. F

Answer: B

17. What will be the results of the following command? clear ip bgp neighbor 192.168.1.170 soft in

- A. clear all routes on th 192.168.1.170 network
- B. dynamically refresh from the 192.168.1.170 neighbor
- C. clear all routes on the neighbor 192.168.1.170
- D. reset the BGP4 session on neighbor 192.168.1.170

Answer: B

18. What are the three possible BGP failure states? Choose all that apply.

- A. Admin
- B. Connect
- C. Active
- D. Idle
- E. Established
- F. Open Sent
- G. Open Confirm

Answer: BCD

19. What port does BGP communicates on?

- A. 161
- B. 110
- C. 80
- D. 179

Answer: D

20. What is the administrative distance for a onnected interface? What is the administrative distance for a ?onnected interface?

- A. 1

B. 10

C. 15

D. 0

Answer: D

Visualexams.com was founded in 2006. The safer,easier way to help you pass any IT Certification exams . We provide high quality IT Certification exams practice questions and answers(Q&A). Especially Adobe, Apple, Citrix, Comptia, EMC, HP, HuaWei, LPI, Nortel, Oracle, SUN, Vmware and so on. And help you pass any IT Certification exams at the first try.

Web site: <http://www.visualexams.com>

You can reach us at any of the email addresses listed below.

E-Mail: [visualexams \(at\) hotmail.Com](mailto:visualexams@hotmail.com)