

Exam : Foundry FN0-202

**Title : fnc4-7e foundry networks
certified layer4-7 engineer**

Version : Demo

1. How many cache groups can be used in Transparent Cache Switching:

- A. 5
- B. 4
- C. 1
- D. 3
- E. 2

Answer: B

2. Session Capacity Threshold defines:

- A. The percent of remaining sessions available on the ServerIron
- B. The total number of sessions used on the ServerIron
- C. The total number of sessions that are configured on the real servers
- D. The total session capacity of the ServerIron

Answer: A

3. Using show server real, if you see UNBND:

- A. The application is bound to the VIP
- B. The application port for the real server is not bound to the real server
- C. The application cannot be found
- D. The VIP is bound to the real server
- E. The application needs to be bound to the real server

Answer: D

4. Filters on the ServerIron configured for Server Load Balancing are:

- A. Set to drop any connections specified by the filter
- B. Applied to packets directed to the VIP
- C. Used to redirect packets to the Internet
- D. Set to drop traffic to or from specified ports

Answer: B

5. When configuring real servers, there must be backup servers in order to have primary servers

A. False

B. True

Answer: A

6. What is the default SLB behavior for Server Load Balancing for packets from the ServerIron to the real server?

Choices:

1)Packets from the ServerIron to the real server a.Destination translates address from the VIP to the real serverIP b.Source translate the clients IP address

2)Packets from the ServerIron to the real server a.Destination translates address from the VIP to the real server IP b.Source leaves the clients IP address unchanged

3)Packets from the ServerIron to the real server a.Destination leave the clients IP address unchanged b.Source Translate the real server IP address into a VIP address

4)Packets from the ServerIron to the real server a.Destination Leave the real server IP address unchanged b.Source leaves the clients IP address unchanged

A. 4

B. 2

C. 1

D. 3

Answer: B

7. Configuring a remote server as primary will include it:

A. As the primary remote backup server

B. As the primary backup server

C. In the VIP balancing with the local servers

D. As the server to access when all the locals have failed

Answer: C

8. What ServerIron CLI command enables FWLB for TCP.

- A. ip policy 1 fw tcp 0 global
- B. ip policy 1 fw tcp 1 global
- C. ip policy 1 fw udp 1 global
- D. server fw-port 5

Answer: A

9. When configuring Hot Standby Redundancy, the configuration from one ServerIron can be copied to another ServerIron exactly except for:

- A. The management address and the MAC address
- B. The MAC address
- C. The sync-link address
- D. The management address

Answer: D

10. Round-Trip Time (RTT) is calculated using:

- A. The time between the local ServerIron and the GSLB ServerIron
- B. The flashback
- C. The time between the site and the users network
- D. The time between connecting to the authoritative DNS server and receiving the reply from the authoritative DNS server.

Answer: C

11. Using show server real, if you see SUSPECT under an application port

- A. The server is reachable at Layer 3 but the application failed Layer 4 or 7 health checks
- B. The application might not be available
- C. The time between packets has increased
- D. There is no link to the server

Answer: C

12. Using DSR requires the real server to:

- A. Have a loopback addresses that is the same as the VIP
- B. Have a loopback address that is the same as the server source-ip
- C. Have a loopback addresses
- D. Have a loopback address in the same subnet as the VIP

Answer: A

13. What is the correct Foundry CLI command syntax for Layer 7 health check to a specific URL ?

- A. ServerIron (config-hc-check1)# url "/sales.html"
- B. ServerIron (config-hc-check1)# port http url "GET/sales.html"
- C. ServerIron (config-hc-check1)# http url "PUT/sales.html"
- D. ServerIron (config-hc-check1)# L7 healthcheck url "/sales.html"

Answer: B

14. A remote server can be included with the load balancing of local servers by

- A. Placing it in the same subnet as the servers
- B. Using the VIP configuration to designate that there are primary and backup servers.
- C. Configuring the ServerIron with "server source-ip" and "source-nat"
- D. Creating layer 2 connectivity to it

Answer: A

15. What best describes the role that the Virtual IP (VIP) Address plays in SLB?

- A. The Virtual IP address maps one logical address to multiple physical servers
- B. The Virtual IP maps ARPs with the real servers IP cache table.
- C. The Virtual IP responds to ARPs with the real servers IP address
- D. The Virtual IP maps multiple logical addresses to one physical port number,

Answer: A

16. Which of the following applies to URL Switching?

- A. URL Switching requires that the same content is on all servers.
- B. URL Switching allows you to direct requests to a particular server or server group based on text in the

URL Sting

C. URL Switching allows you to direct traffic based on simple text located in the HTTP Header.

D. URL Switching allows you to place different content on different servers

Answer: BD

17. What is the default setting for Layer 3 HealthChecks on the ServerIron 100/400/800 product family?

A. Interval = 4 sec, Retries = 2

B. Interval = 2 sec Retries = 20

C. Interval = 20 sec, Retries = 2

D. Interval = 2 sec, Retries = 4

Answer: D

18. It is possible to have more than one VIP assigned to an application port

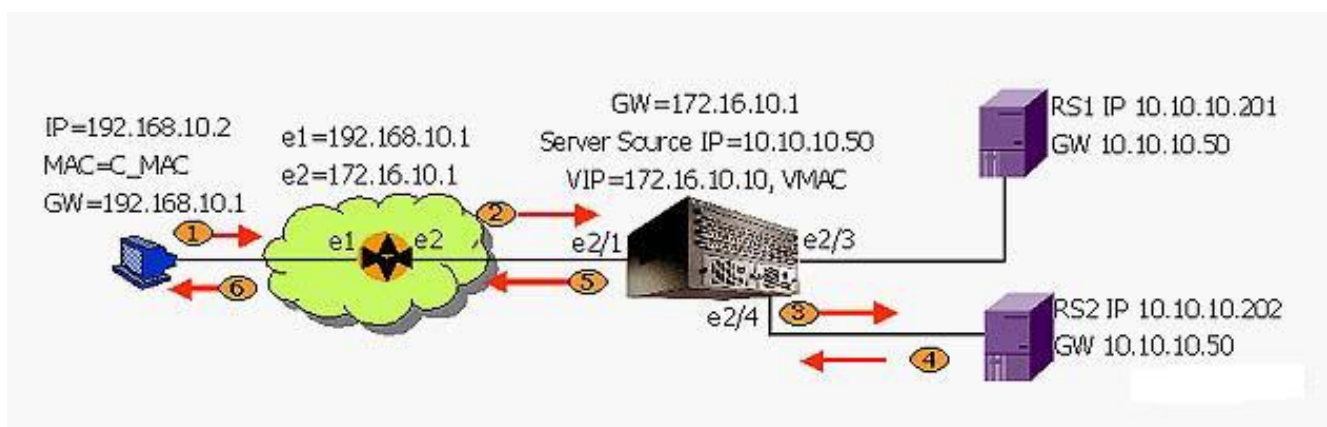
A. True

B. False

Answer: A

19. Given the illustrated SLB Data Flow - what will packet at step #3 (from the ServerIron to RS2) look like

DMAC SMAC SIP DIP Port



A. RS2 V_MA 192.168.10.2 10.10.10.20280

B. RS2 V_MA 10.10.10.50 10.10.10.20280

C. RS2 e2/4 172.16.10.10 10.10.10.20280

D. RS2 e2/4 192.168.10.2 10.10.10.20280

Answer: C

20. What is the Foundry CLI command "ip tcp burst" used for?

A. Enable tcp bursts

B. None of the above

C. Protect against TCP SYN attacks.

D. Flood TCP SYN

Answer: C