

Exam : FileMaker FM0-302

**Title : FileMaker 8 Developer
Essentials Exam**

Version : Demo

Important Note, Please Read Carefully

Other VisualExams products

[All visualexams IT Exam Products](#)

Our products of Offline Testing Engine

Use the offline Testing engine product to practice the questions in an exam environment.

Build a foundation of knowledge which will be useful also after passing the exam.

[visualexams Testing Engine](#)

Latest Version

We are constantly reviewing our products. New material is added and old material is revised. Free updates are available for 90 days after the purchase. You should check your member zone at VisualExams and update 3-4 days before the scheduled exam date.

Here is the procedure to get the latest version:

1. Go to <http://www.visualexams.com/>
2. Log in the **User Center**
3. The latest versions of all purchased products are downloadable from here. Just click the links.

Feedback

If you spot a possible improvement then please let us know. We always interested in improving product quality.

Feedback should be send to Visualexams@hotmail.com. You should include the following: Exam number, version, page number, question number, and your login Account.

Our experts will answer your mail promptly.

Explanations

This product does not include explanations at the moment. If you are interested in providing explanations for this exam, please contact Visualexams@hotmail.com.

Features

- Comprehensive questions with complete details
- Instant Downloadable in PDF form.
- Verified Answers Researched by Industry Experts
- Questions accompanied by exhibits.
- Drag and Drop questions as experienced in the Actual Exams.
- These questions and answers are backed by our GUARANTEE.
- Questions updated on regular basis.
- Like actual certification exams our product is in multiple-choice questions (MCQs)

Commitment to Your Success: At VisualTestExam.com, we are committed to you ongoing success. Our exams and questions are constantly being updated and compared to industry standards.

Want to earn a Microsoft certification like MCSE, MCSE 2003, CCNA, CCNP? Thinking about getting an A+ or CCSP?

A, CCSP or Network+ Certification with less effort and time. You will be astonished at the theoretical and practical knowledge you will acquire in such a short period of time using our Certification Training Products. Our Study material will enable you to pass your Microsoft, Your Cisco and any other certification on the very first attempt.

Guarantee

Visualexams provides the most competitive quality of all exams for the customers, we guarantee your success at the first attempt with only our Certification Question&Answers, if somehow you do not pass the exam at the first time, we will not only arrange FULL REFUND for you, but also provide you another exam of your claim, ABSOLUTELY FREE!

1. Which type of file results from converting a CDML format file using the FileMaker CDML Converter?

- A. XSL style sheet
- B. CSS style sheet
- C. HTML document
- D. XHTML document

Answer: A

2. On conversion to FileMaker Pro 8, what does the old password from FileMaker Pro 6 become?

- A. a privilege set
- B. only the account name
- C. only the account password
- D. both an account name and account password

Answer: D

3. Which two can be used to import data into a FileMaker Pro 8 file directly from FileMaker Pro 6, without first having to export the data from FileMaker Pro 6? (Choose two.)

- A. XML
- B. SYLK
- C. HTML
- D. ODBC

Answer: AD

4. Which two are required for a plug-in to be used with Web Published databases? (Choose two.)

- A. It must be installed on the Web browser.
- B. It must not attempt to display information to the user's screen.
- C. It must be enabled for Web Publishing on FileMaker Server 8 Advanced.
- D. It must be installed in the Plugins directory of the Web Publishing Engine.

Answer: BD

5. Which three Web Publishing options are available in FileMaker 8? (Choose three.)

- A. Instant Web Publishing using FileMaker Pro 8
- B. Instant Web Publishing using FileMaker Server 8
- C. Custom Web Publishing using FileMaker Pro 8 Advanced
- D. Instant Web Publishing using FileMaker Server 8 Advanced
- E. Custom Web Publishing using FileMaker Server 8 Advanced

Answer: ADE

6. Which three technologies/products may be used in conjunction with FileMaker Server 8 Advanced to produce custom Web pages? (Choose three.)

- A. JSP

- B. UML
- C. PHP
- D. CDML
- E. XSLT

Answer: ACE

7. Which two statements are true for an account in a FileMaker Pro 8 database that is authenticated externally? (Choose two.)

- A. The database may be hosted on FileMaker Server 8.
- B. The account is authenticated via : External Server.
- C. The database may be hosted on FileMaker Pro 8 Advanced.
- D. The account must be a member of a privilege set with the External Account extended privilege enabled.

Answer: AB

8. FileMaker Pro 8 allows five (5) failed login attempts before halting the re-login process. What are two ways this behavior can be altered? (Choose two.)

- A. set the Allow User Abort [] script step to [on]
- B. set the Set Error Capture [] script step to [on]
- C. put the Re-Login [] script step in a loop that exits when Get(LastError) equals 0
- D. define the maximum number of attempts in the Edit Privilege Set dialog

Answer: BC

9. Which two statements are true about the [Full Access] privilege set? (Choose two.)

- A. It can be deleted and/or renamed.
- B. It must have at least one account associated with it.
- C. Another privilege set with the same functionality can be created.
- D. Associated accounts cannot log in over a network unless the [fmapp] extended privilege is enabled.

Answer: BD

10. Given a table, Table A in File A; which permissions allow access to data in Table A from another file, File B?

- A. File B must be opened by an account with [Full Access].
- B. File A and File B must have an account with the same name and password.
- C. The privilege set associated with the account that is logged into File A must allow access to the records in Table A.
- D. The privilege set associated with the account that is logged into File B must allow access to the records in Table A.

Answer: C

11. When FileMaker Server 8 is set to Secure connections to FileMaker Server, which two statements are

true? (Choose two.)

- A. Secure connections are typically faster because of data encryption.
- B. Secure Sockets Layer (SSL) is used by FileMaker Pro 8 client connections.
- C. Connections between FileMaker Server 8 and FileMaker Pro 8 are encrypted.
- D. Connections between FileMaker Server 8 Advanced and XML clients are encrypted.

Answer: BC

12. Which two privileges are needed for a non [Full Access] privilege set to allow the creation and modification of new layouts in a FileMaker Pro 8 database? (Choose two.)

- A. Design layouts is checked in the Edit Account dialog.
- B. [Any New Layout] layout privileges are set to modifiable.
- C. Allow creation of new layouts is checked in the Edit Account dialog.
- D. Allow creation of new layouts is checked in the Custom Layout Privileges dialog.

Answer: BD

13. Which three statements are true about field indexing in FileMaker Pro 8? (Choose three.)

- A. Indexing improves the speed at which finds are performed.
- B. Value lists require at least one referenced field to be indexed.
- C. To establish a relationship between two fields, both fields are required to be indexed.
- D. Using Unicode as the default language by which a field is indexed causes sorts on that field to be case sensitive.
- E. A value index, used in establishing relationships, stores up to 60 primary characters or digits per return-delimited line.

Answer: ABD

14. A number field in FileMaker Pro 8 called AmountPaid is set to auto-enter the following formula:

Case (

AmountPaid > AmountDue;

TextColor (AmountPaid ; RGB (0; 255 ; 0));

AmountPaid > 0 ;

TextColor (AmountPaid ; RGB (255 ; 0 ; 0));

AmountPaid

)

The Do not replace existing value of field (if any) option is unchecked.

Which statement is true?

- A. The calculation will only be evaluated the first time a value is entered into AmountPaid.
- B. A user will not be able to manually edit the field once the calculation has been evaluated.
- C. If the value in the AmountDue field is changed, the AmountPaid field will be re-evaluated.

D. The calculation will prevent a user from entering an incorrect value into the AmountPaid field.

Answer: C

15. Consider two files, Alpha and Beta, where tables from Beta are included in the Relationships Graph of Alpha as external table occurrences. What are two ways to rename Beta while preserving all functionality in Alpha? (Choose two.)

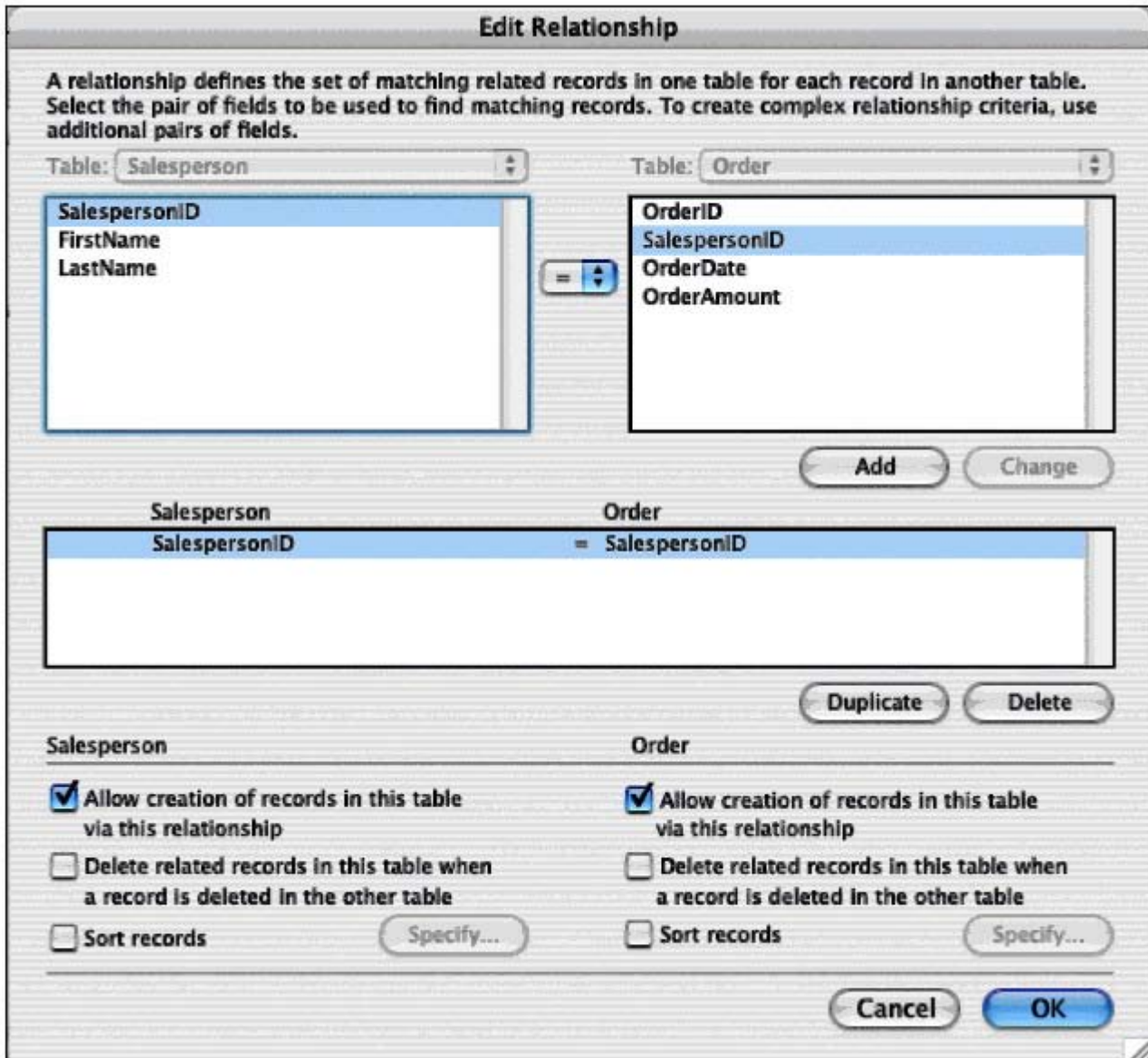
- A. change the file path of the Beta File Reference in Alpha
- B. rename Beta using the File > Save a Copy As... option
- C. rename any table occurrences that are based on Beta to match the new file name
- D. use Tools > Developer Utilities... in FileMaker Pro 8 Advanced to rename Beta

Answer: AD

16. Click the Exhibit button

Consider a FileMaker Pro 8 database with two tables called Salesperson and Order, and a relationship between the two tables based on a SalespersonID field. The relationship is configured as shown in the exhibit. There is a layout called Salesperson Detail, based on the Salesperson table occurrence, with a portal showing Order records via the above relationship.

Which three statements are true? (Choose three.)



- A. Deleting a Salesperson record also deletes all related Order records.
- B. It is possible to create new Salesperson records by importing data into the Order table.
- C. It is possible to create a new Salesperson record using a Set Field [] script step in a script that runs in the context of the Order table occurrence.
- D. Users may create new Order records by entering data into the portal on the Salesperson Detail layout.
- E. It is possible to create a new Salesperson record by typing into a related salesperson field displayed on a layout that is based on the Order table occurrence.

Answer: CDE

17. Which three statements about field validation are true in FileMaker Pro 8? (Choose three.)

- A. Fields can only be validated by a single criterion.
- B. Field validation warnings may be triggered by scripts.
- C. Users can be prevented from overriding the validation warning.
- D. A script can be specified to run when manually entered field data fail validation.

E. Users can be presented with a specific message that they will see when a field fails validation.

Answer: BCE

18. Click the Exhibit button.

You want to build a FileMaker Pro 8 database that models a business organizational chart. One person may manage zero or more people. One person may be managed by at most one other person.

You want to build the system in such a way that a single layout about a person can display the name of the current person's manager as well as a portal of the people managed by the current person (as shown in the exhibit).

Assume that there are no lookup fields or calculation fields defined in any table, and there are no scripts in the file.

What is the minimum number of table occurrences you must use to construct the layout?

Employee			
EmployeeID	2		
FirstName	Pamela		
LastName	Dreyfus		
Department	Finance		
Title	VP Finance		
Manager	Denise Garcia		
		Direct Reports	
Nancy	Eison	Executive Comptroller	▲
Dennis	Estrella	Executive Assistant	
Luke	Forest	Purchasing Agent	
			▼

- A. one
- B. two
- C. three
- D. four

Answer: C

19. A field in FileMaker Pro 8 has been set to validate Always. Which two actions will trigger validation on that field? (Choose two.)

- A. importing data into that field
- B. making a change to the field's data type
- C. editing data in the field using Instant Web Publishing
- D. clicking into the field, then immediately exiting the field

Answer: AC

20. Consider two FileMaker Pro 8 files, Alpha and Beta, where a table from Beta appears as an externally referenced table occurrence on Alpha's Relationships Graph. Which three statements are true? (Choose three.)

- A. Layouts in Alpha can display data from Beta.
- B. Alpha can contain multiple valid file references to Beta.
- C. It is impossible to lock records in both Alpha and Beta simultaneously.
- D. Layouts from Beta cannot be displayed in the same window as layouts from Alpha.
- E. A table occurrence from Beta is required on Alpha's Relationships Graph in order to call a script in Beta from Alpha.

Answer: ABD

Visualexams.com was founded in 2006. The safer,easier way to help you pass any IT Certification exams . We provide high quality IT Certification exams practice questions and answers(Q&A). Especially Adobe, Apple, Citrix, Comptia, EMC, HP, HuaWei, LPI, Nortel, Oracle, SUN, Vmware and so on. And help you pass any IT Certification exams at the first try.

Web site: <http://www.visualexams.com>

You can reach us at any of the email addresses listed below.

E-Mail: [visualexams \(at\) hotmail.Com](mailto:visualexams@hotmail.com)