

**Exam : Extreme Networks EW0-300**

**Title : Extreme Networks  
Specialist**

**Version : Demo**

## Important Note, Please Read Carefully

### Other VisualExams products

[All visualexams IT Exam Products](#)

### Our products of Offline Testing Engine

Use the offline Testing engine product to practice the questions in an exam environment.

Build a foundation of knowledge which will be useful also after passing the exam.

[visualexams Testing Engine](#)

### Latest Version

We are constantly reviewing our products. New material is added and old material is revised. Free updates are available for 90 days after the purchase. You should check your member zone at VisualExams and update 3-4 days before the scheduled exam date.

Here is the procedure to get the latest version:

1. Go to <http://www.visualexams.com/>
2. Log in the **User Center**
3. The latest versions of all purchased products are downloadable from here. Just click the links.

### Feedback

If you spot a possible improvement then please let us know. We always interested in improving product quality.

Feedback should be send to [visualexams@hotmail.com](mailto:visualexams@hotmail.com). You should include the following: Exam number, version, page number, question number, and your login Account.

Our experts will answer your mail promptly.

### Explanations

This product does not include explanations at the moment. If you are interested in providing explanations for this exam, please contact [visualexams@hotmail.com](mailto:visualexams@hotmail.com).

## Features

- Comprehensive questions with complete details
- Instant Downloadable in PDF form.
- Verified Answers Researched by Industry Experts
- Questions accompanied by exhibits.
- Drag and Drop questions as experienced in the Actual Exams.
- These questions and answers are backed by our GUARANTEE.
- Questions updated on regular basis.
- Like actual certification exams our product is in multiple-choice questions (MCQs)

Want to earn a Microsoft certification like [MCSE](#), [MCSE 2003](#), [CCNA](#), [CCNP](#)? Thinking about getting an [A+](#) or [CCSP](#)?

A, [CCSP](#) or [Network+](#) Certification with less effort and time. You will be astonished at the theoretical and practical knowledge you will acquire in such a short period of time using our Certification Training Products. Our Study material will enable you to pass your [Microsoft](#), Your [Cisco](#) and any other certification on the very first attempt.

## Guarantee

Visualexams provides the most competitive quality of all exams for the customers, we guarantee your success at the first attempt with only our Certification Question&Answers, if you do not pass the exam at the first time, we will not only arrange FULL REFUND for you, but also provide you another exam of your claim, ABSOLUTELY FREE!

1. When limit-learning is configured on a port and the limit is reached the following traffic still flows to the port.

- A. Packets destined for the active Mac addresses
- B. Broadcast traffic
- C. EDP traffic
- D. All of the above

**Answer: D**

2. Extreme ware 7.0 supports both level1 and level 2 IS-IS routers.

- A. TRUE
- B. FALSE

**Answer: A**

3. The integrated IS-IS protocol allows for mixing of IP-only,OSI-only, and dual (IP and OSI) routers.

- A. True
- B. False

**Answer: A**

4. In OSPF, the router type that is required to connect an area with another area is the

- A. Designated Router
- B. Back-up Designated Router
- C. ASBR
- D. ABR

**Answer: D**

5. EAPS protection switching is similar to what can be achieved with the Spanning Tree Protocol but one of the big advantages of EAPS is

- A. EAPS also supports star topologies

- B. EAPS has a recovery time of less than a second in case of link failure.
- C. An EAPS domain supports multiple root bridges, thus alternative path
- D. EAPS eliminates the need for protocols like ESRP or VRRP that bring default gateway redundancy.

**Answer:** B

6. On a RADIUS server you can distinguish between switch access and Netlogin authentication. Extreme provides a vendor specific attribute ExtremeExtreme-Netlogin-only =disabled/enabled.

User authentication for both Netlogin and switch access is allowed when the value is disabled.

When the value enabled user authentication is restricted to Netlogin only.

A. True

B. False

**Answer:** A

7. The following modes of operation are supported with the Network login feature. (choose all that apply)

A. Secure mode

B. Campus mode

C. Quick Mode

D. ISP mode

**Answer:** ABCD

8. An LSP is a link state packet used by which routing protocol?

A. OSPF

B. RIP

C. BGP

D. None of these

**Answer:** D

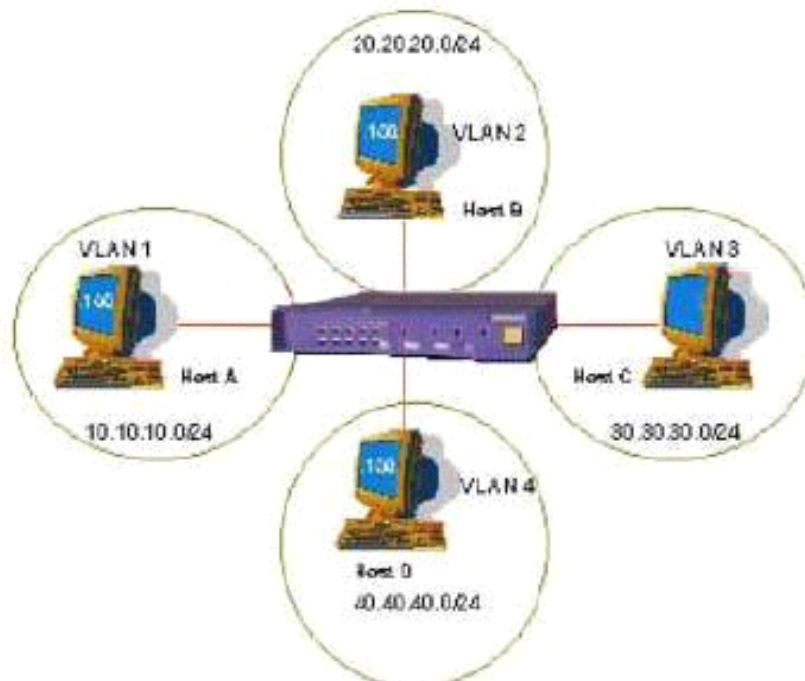
9. It is possible to set an STP-threshold to switch from a shared tree to a shortest path tree. This switch over will be initiated by

A. The Rendezvous Point

- B. The Bootstrap Router
- C. A last hop router
- D. The router nearest to the source

**Answer: C**

10. Exhibit According to accompanying diagram and ACL configuration it is possible for Host A (10.10.10.100) and Host C (30.30.30.100) to successfully communicate.



```
create access-list ip1 ip destination 20.20.20.100/32 source 10.10.10.100/32 permit ports any ignore-overlap
create access-list ip2 ip destination 30.30.30.100/32 source 10.10.10.100/32 permit ports any ignore-overlap
create access-list ip3 ip destination 40.40.40.100/32 source 10.10.10.100/32 permit ports any ignore-overlap
create access-list ip4 ip destination 10.10.10.100/32 source 20.20.20.100/32 permit ports any ignore-overlap
create access-list ip5 ip destination 10.10.10.100/32 source 30.30.30.100/32 permit ports any ignore-overlap
create access-list ip6 ip destination 10.10.10.100/32 source 40.40.40.100/32 permit ports any ignore-overlap
create access-list default rule ip destination any source any deny ports any
```

- A. TRUE
- B. FALSE

**Answer: A**

Visualexams.com was founded in 2006. The safer,easier way to help you pass any IT Certification exams . We provide high quality IT Certification exams practice questions and answers(Q&A). Especially Adobe, Apple, Citrix, Comptia, EMC, HP, HuaWei, LPI, Nortel, Oracle, SUN, Vmware and so on. And help you pass any IT Certification exams at the first try.

Web site: <http://www.visualexams.com>

You can reach us at any of the email addresses listed below.

E-Mail: [visualexams \(at\) hotmail.Com](mailto:visualexams@hotmail.com)