

Exam : Nortel 920-180

Title : NCTS Real Time Networking

Version : Demo

Important Note, Please Read Carefully

Other VisualExams products

[All visual exams IT Exam Products](#)

Our products of Offline Testing Engine

Use the offline Testing engine product to practice the questions in an exam environment.

Build a foundation of knowledge which will be useful also after passing the exam.

[visual exams Testing Engine](#)

Latest Version

We are constantly reviewing our products. New material is added and old material is revised. Free updates are available for 90 days after the purchase. You should check your member zone at VisualExams and update 3-4 days before the scheduled exam date.

Here is the procedure to get the latest version:

1. Go to <http://www.visual exams.com/>
2. Log in the **User Center**
3. The latest versions of all purchased products are downloadable from here. Just click the links.

Feedback

If you spot a possible improvement then please let us know. We always interested in improving product quality.

Feedback should be send to Visual exams@hotmail.com. You should include the following: Exam number, version, page number, question number, and your login Account.

Our experts will answer your mail promptly.

Explanations

This product does not include explanations at the moment. If you are interested in providing explanations for this exam, please contact Visual exams@hotmail.com.

Features

- Comprehensive questions with complete details
- Instant Downloadable in PDF form.
- Verified Answers Researched by Industry Experts
- Questions accompanied by exhibits.
- Drag and Drop questions as experienced in the Actual Exams.
- These questions and answers are backed by our GUARANTEE.
- Questions updated on regular basis.
- Like actual certification exams our product is in multiple-choice questions (MCQs)

Commitment to Your Success: At VisualTestExam.com, we are committed to you ongoing success. Our exams and questions are constantly being updated and compared to industry standards.

Want to earn a Microsoft certification like [MCSE](#), [MCSE 2003](#), [CCNA](#), [CCNP](#)? Thinking about getting an [A+](#) or [CCSP](#)?

A, [CCSP](#) or [Network+](#) Certification with less effort and time. You will be astonished at the theoretical and practical knowledge you will acquire in such a short period of time using our Certification Training Products. Our Study material will enable you to pass your [Microsoft](#), Your [Cisco](#) and any other certification on the very first attempt.

Guarantee

VisualExams provides the most competitive quality of all exams for the customers, we guarantee your success at the first attempt with only our Certification Question&Answers, if somehow you do not pass the exam at the first time, we will not only arrange FULL REFUND for you, but also provide you another exam of your claim, ABSOLUTELY FREE!

1. Which three components are H.323 endpoints? (Choose three.)

- A. Gatekeeper
- B. Terminal
- C. Gateway
- D. Multipoint Control Unit (MCU)
- E. Security Relay

Answer: BCD

2. Which statement is true concerning SIP protocol?

- A. SIP is based on H.323
- B. SIP is an extension of HTTP/1.1
- C. SIP is a component of HTTP/1.1
- D. SIP is based on a request/response transaction model

Answer: D

3. In an H.248 connection model, which is the definition of a context?

- A. Contexts represent the different phases of call setup.
- B. Contexts represent the segregation of call server domains.
- C. Contexts represent associations between collections of terminations.
- D. Contexts represent the difference between signaling traffic, bearer traffic and administration traffic for a device.

Answer: C

4. H.248 is which type of protocol?

- A. a QoS Protocol
- B. a Media Gateway control protocol
- C. a Peer-to-Peer call control protocol
- D. a Real-Time packet encoding protocol

Answer: B

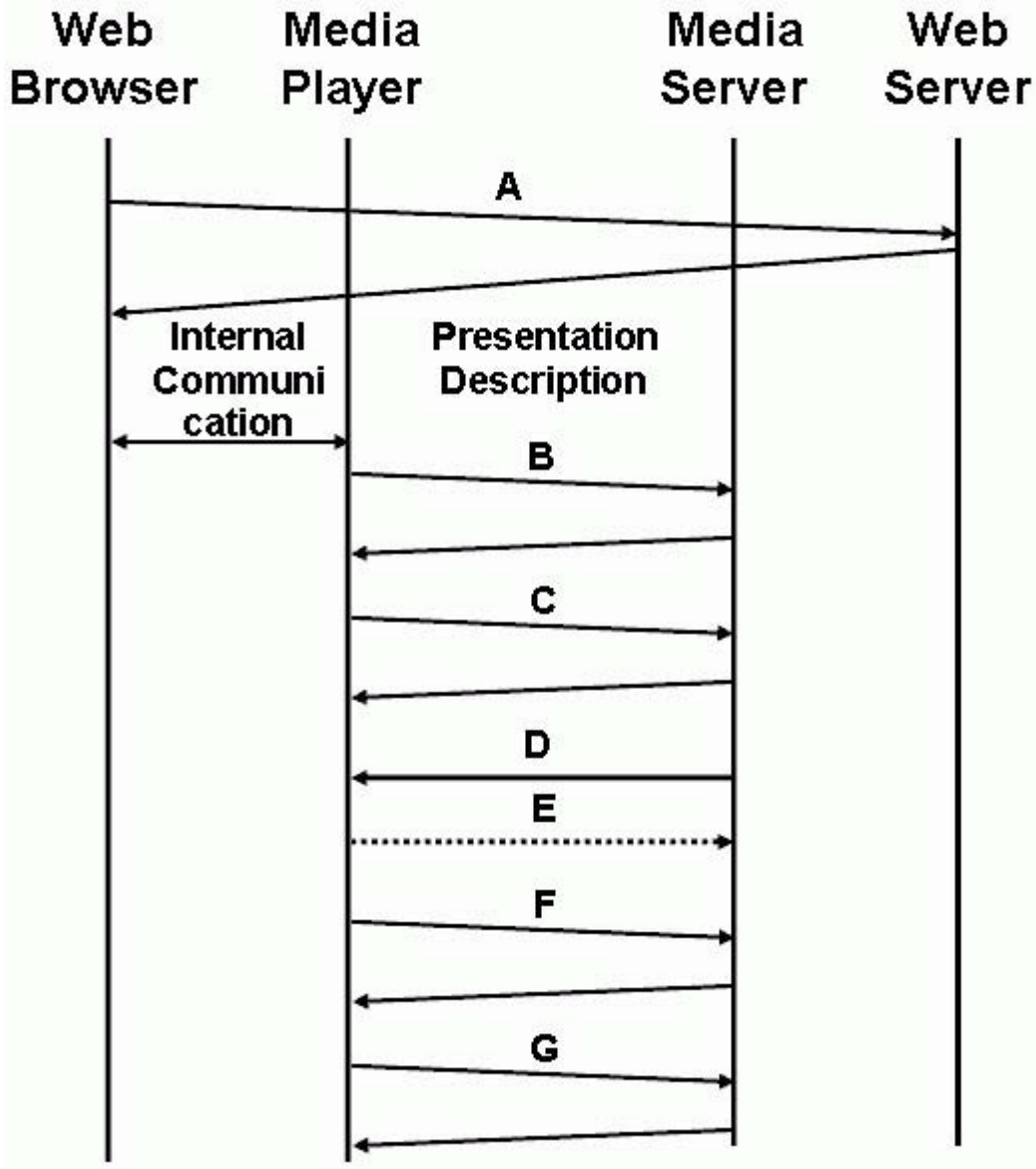
5. Which protocol is used for establishing media streams in H.323?

- A. G.711
- B. H.225.0
- C. H.245
- D. H.450

Answer: C

6. Click on the Exhibit button.

In a typical RTSP operation what type of protocol will be used with transaction A?

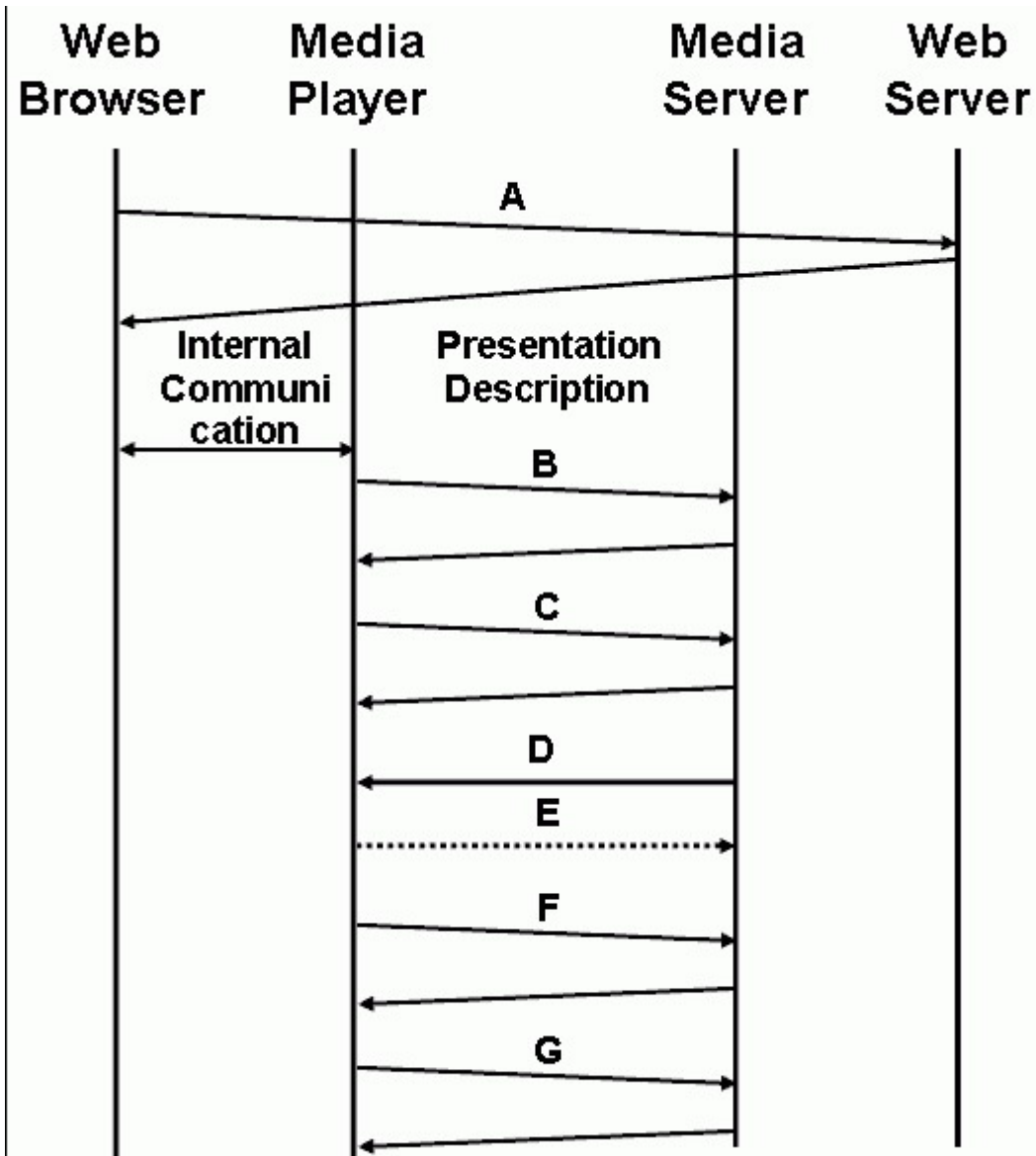


- A. RTP
- B. RTCP
- C. HTTP
- D. RTSP

Answer: C

7. Click on the Exhibit button.

In a typical RTSP operation what type of protocol will be used with transaction C?



- A. RTP
- B. RTCP
- C. HTTP
- D. RTSP

Answer: D

8. Which feature is common to both TCP and RTP?

- A. multicast
- B. error recovery
- C. session protocol
- D. reliable connection
- E. flow/congestion control

Answer: C

9. Several RTP streams can be combined into a single stream. There are two sessions with SSRC=6 and

SSRC=23. Which are possible new session numbers? (Choose two.)

- A. 6
- B. 17
- C. 23
- D. 53

Answer: BD

10. Which application can NOT be implemented using SUBSCRIBE/NOTIFY when using SIP protocol?

- A. Codec Re-negotiation
- B. Keypad Press Reporting
- C. Message Waiting Indication
- D. Presence (i.e., "Friends list")

Answer: A

11. How do end users connect to an Optical Ethernet network?

- A. through a DS1 interface
- B. through a DS3 interface
- C. through an optical SONET interface
- D. through a variety of Ethernet interfaces

Answer: D

12. What is a 3G cellular technology?

- A. Advanced Mobile Phone Service (AMPS)
- B. Global System for Mobile Communications (GSM)
- C. General Packet Radio Service (GPRS)
- D. Code Division Multiple Access (CDMA)
- E. Universal Mobile Telecommunications Service (UMTS)

Answer: E

13. When is Multiprotocol Label Switching (MPLS) local recovery chosen over MPLS global recovery?

- A. When faster recovery is sought.
- B. When too few Label Switch Paths (LSPs) are setup.
- C. When insufficient bandwidth is available in the network.
- D. When the network is NOT very meshed (small degree of connectivity).

Answer: A

14. What technology allows a SONET ring to act like the backplane of an Ethernet switch?

- A. TDI
- B. STS
- C. RPR

D. VLAN

Answer: C

15. Which tasks must be performed by NAT devices to support H.323 over UDP? (Choose two.)

- A. recalculation of the H.323 Security code
- B. recalculation of the transport layer checksum
- C. alteration of IP addresses embedded in the H.323 packet
- D. H.323 Gatekeeper tasks (i.e. NAT must also be H.323 Gatekeeper)

Answer: BC

16. Which is a difference between basic NAT and NAPT?

- A. NAPT creates dynamic bindings but basic NAT does NOT.
- B. NAPT supports full cone operation but basic NAT does NOT.
- C. Basic NAT does stateful packet inspection and NAPT does NOT.
- D. Basic NAT has a one-to-one mapping of IP addresses and NAPT supports a many-to-one mapping.

Answer: D

17. Which protocols are used to detect the failures that impact Label Switch Path (LSP) traffic?

- A. RSVP-TE Hello and ITU-T Y1711
- B. OSPF-TE keep-alive and ATM PNNI
- C. RSVP-TE Hello and OSPF keep-alive
- D. ITU-T Y1711 and OSPF-TE keep-alive

Answer: A

18. The FRF.11 specification is associated with which aspect of real-time networking?

- A. Frame Relay QoS
- B. Frame Fragmentation
- C. Frame Relay Voice
- D. Frame Relay Service Category

Answer: C

19. A customer currently is running a SONET UPSR network and would like to upgrade to RPR. How does RPR improve bandwidth efficiency over SONET UPSR?

- A. RPR uses VLANs
- B. RPR has Spatial reuse
- C. RPR is connectionless
- D. RPR uses Ethernet Headers

Answer: B

20. Which is the correct definition of STP as applied to an Ethernet switch?

- A. Signal Transfer Point

- B. Simple Timing Protocol
- C. Spanning Tree Protocol
- D. Switch Transaction Protocol

Answer: C

Visualexams.com was founded in 2006. The safer,easier way to help you pass any IT Certification exams . We provide high quality IT Certification exams practice questions and answers(Q&A). Especially Adobe, Apple, Citrix, Comptia, EMC, HP, HuaWei, LPI, Nortel, Oracle, SUN, Vmware and so on. And help you pass any IT Certification exams at the first try.

Web site: <http://www.visualexams.com>

You can reach us at any of the email addresses listed below.

E-Mail: [visualexams \(at\) hotmail.Com](mailto:visualexams@hotmail.com)