

Exam : Nortel 920-124

**Title : NNCDS -Ethernet Switching
Exam**

Version : Demo

Important Note, Please Read Carefully

Other VisualExams products

[All visualexams IT Exam Products](#)

Our products of Offline Testing Engine

Use the offline Testing engine product to practice the questions in an exam environment.

Build a foundation of knowledge which will be useful also after passing the exam.

[visualexams Testing Engine](#)

Latest Version

We are constantly reviewing our products. New material is added and old material is revised. Free updates are available for 90 days after the purchase. You should check your member zone at VisualExams and update 3-4 days before the scheduled exam date.

Here is the procedure to get the latest version:

1. Go to <http://www.visualexams.com/>
2. Log in the **User Center**
3. The latest versions of all purchased products are downloadable from here. Just click the links.

Feedback

If you spot a possible improvement then please let us know. We always interested in improving product quality.

Feedback should be send to Visualexams@hotmail.com. You should include the following: Exam number, version, page number, question number, and your login Account.

Our experts will answer your mail promptly.

Explanations

This product does not include explanations at the moment. If you are interested in providing explanations for this exam, please contact Visualexams@hotmail.com.

Features

- Comprehensive questions with complete details
- Instant Downloadable in PDF form.
- Verified Answers Researched by Industry Experts
- Questions accompanied by exhibits.
- Drag and Drop questions as experienced in the Actual Exams.
- These questions and answers are backed by our GUARANTEE.
- Questions updated on regular basis.
- Like actual certification exams our product is in multiple-choice questions (MCQs)

Commitment to Your Success: At VisualTestExam.com, we are committed to you ongoing success. Our exams and questions are constantly being updated and compared to industry standards.

Want to earn a Microsoft certification like MCSE, MCSE 2003, CCNA, CCNP? Thinking about getting an A+ or CCSP?

A, CCSP or Network+ Certification with less effort and time. You will be astonished at the theoretical and practical knowledge you will acquire in such a short period of time using our Certification Training Products. Our Study material will enable you to pass your Microsoft, Your Cisco and any other certification on the very first attempt.

Guarantee

Visualexams provides the most competitive quality of all exams for the customers, we guarantee your success at the first attempt with only our Certification Question&Answers, if somehow you do not pass the exam at the first time, we will not only arrange FULL REFUND for you, but also provide you another exam of your claim, ABSOLUTELY FREE!

1. A user wants to allow and disallow communications in their Passport 8600 environment based on device MAC addresses. Which type of VLAN should be employed?

- A. port-based
- B. MAC-based
- C. MAC-device
- D. Device-based

Answer: B

2. Given the following network information:

A technical training institute has a main office and three branch offices located within a campus environment.

The main office uses a Passport 8600 routing switch and each branch office has a Passport 1648T routing switch.

The Passport 1648T in each branch office connects to the main office Passport 8600 using Gigabit Ethernet links.

OSPF has been implemented as the institute's inter-office routing protocol.

The institute wants to be able to share a common connection to the Internet from the main office using the Passport 8600, so that all the branch offices can have access to the latest technology and certification information.

Which method should be implemented for the connection between the Passport 8600 and the Internet to provide this capability?

- A. Use BGP-4
- B. Use OSPF
- C. Use RIP v2.
- D. Use default routing

Answer: D

3. A RIP network has NOT created specific policies that will advertise into an OSPF network. How will OSPF treat the routes?

- A. OSPF will ignore the routes from the RIP network.

- B. OSPF will accept the routes from the RIP network.
- C. OSPF will accept only generic Type I routes from the RIP network.
- D. OSPF will accept only generic Type II routes from the RIP network.

Answer: A

4. You are designing a switched network for a customer using Business Policy Switch (BPS) 2000s. What are two benefits of multiple STGs on the BPS 2000? (Choose two.)

- A. They allow for MultiLink Trunks to be configured to provide redundancy.
- B. A BPS 2000 can be connected to a BayStack 450 stack to provide multiple STGs on the hybrid stack.
- C. Multiple STGs can provide multiple data paths, which can be used for load balancing and redundancy.
- D. When interconnecting multiple BPS 2000 switches, connections can be assigned in different STGs to avoid blocked ports.

Answer: CD

5. Given this network information:

A customer has a single BayStack 470-48T connected to the corporate network via a Passport 8600.

The connection to the Passport 8600 is through two Gigabit Ethernet uplinks configured in a MultiLink Trunk (MLT).

Due to an increase in the number of users that need to be supported, two additional BayStack 470-48Ts will be installed so that all of the switches are stacked together and managed as a single unit.

The customer wants to implement fail-safe stacking to ensure that if any one of the switches fails, the remaining switches in the stack will still function and have connectivity to the corporate network.

What must be done to the customer's configuration to meet the requirements in this situation?

- A. Convert the MLT into a Distributed MLT.
- B. Use Gigabit Ethernet uplink connectors that support LinkSafe.
- C. Connect the BayStack 470-48T switches in a stack up configuration.
- D. Connect at least one Gigabit Ethernet uplink on each BayStack 470-48T.

Answer: A

6. You have designed a network with three wiring closets and three VLANs. All three VLANs are present in

each wiring closet and VLAN tagging is used on the closet interconnections. Which best describes the VLAN Identifier (VID)?

- A. It is a classification mechanism that associates a port with a specific VLAN.
- B. It is the 12-bit portion of the VLAN tag in the frame header that identifies to which VLAN a packet belongs.
- C. It is a set of ports that form a collision domain for a specific VLAN. A port can be a member of one or more VLANs.
- D. It is a three-bit field in the header of a tagged frame. The field is interpreted as a binary number, and therefore can have a value of 0 - 7.

Answer: B

7. A customer is expressing concern about reliability for their trunking implementation. How can the Passport 8600 cost-effectively eliminate a single point of failure in this scenario?

- A. configure multiple Passport 8600s
- B. add a second switch fabric module
- C. duplicate the trunk elements in software
- D. distribute the trunks across separate modules

Answer: D

8. A switch and server configuration is using Multi-link Trunking (MLT) to aggregate multiple 100-MB links. What happens if a single link fails?

- A. forwarding stops
- B. forwarding stops until link is restored
- C. forwarding continues over remaining links
- D. forwarding is diverted to next available group

Answer: C

9. The BayStack 10 PSU configured without UPS will provide protection against which failure scenario?

- A. rolling blackouts
- B. regional power surges and sags

- C. power loss to the entire building
- D. failure of the primary AC power supply on a BayStack switch

Answer: D

10. A customer has connected his stack of BayStack 470-48Ts to the network core in this way:

Two Passport 8600s running VRRP are at the network core

Two Gigabit Ethernet links configured in a Split MultiLink Trunk (SMLT) connect the BayStack 470-48T stack and the two Passport 8600s

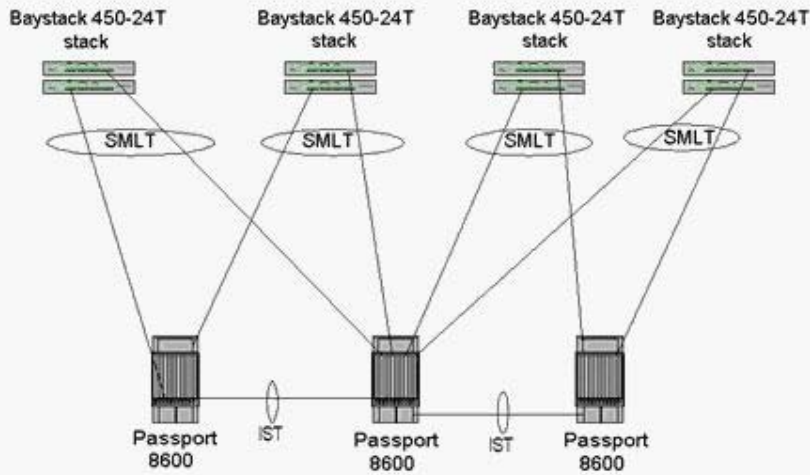
Two Gigabit Ethernet connections provide the IST connections between the Passport 8600s. The customer wants to load share the Layer 3 traffic across the SMLT links.

Which configuration change will provide the greatest benefit to the customer?

- A. Enable ECMP on the SMLT links to allow the Passport 8600s to load share traffic.
- B. Disable VRRP on the Passport 8600s, and use static routes to distribute the traffic between the two trunks.
- C. Use the VRRP extension, BackupMaster, on the Passport 8600s to allow the backup VRRP switch to route traffic for entries in its routing table.
- D. Decrease the cost of the IST paths to allow more traffic on the connection between the two Passport 8600s, so that routed traffic can use both SMLT links.

Answer: C

11. A customer is designing a switched network and wants to make use of all three of their Passport 8600s at the network core. The customer wants to ensure redundancy for the uplink connections from their BayStack switches (click on the exhibit button). Which statement is true regarding the design?



- A. The configuration is invalid. Only one IST is allowed per Passport 8600.
- B. The configuration is invalid. Each IST connection must contain two links for redundancy.
- C. The IST links between each pair of Passport 8600s must both be in the same VLAN for the configuration to be valid.
- D. Spanning tree must be enabled in the spanning tree group that the IST links are configured in, to avoid any potential loops..

Answer: A

12. A small-enterprise customer wants to provide routing functionality to their data network. They are planning to implement two Passport 1424T routing switches and one Passport 1648T routing switch. The customer's Network Administrator has very limited knowledge and experience in routing and is looking for an easy way to configure and manage a classless routing protocol to be used on the network. Which routing protocol will most effectively meet the customer's requirements?

- A. BGP-4
- B. OSPF

C. RIP v2

D. RIP v1

Answer: C

13. Two BayStack 450-24Ts will be used in a stack to connect the company servers to the network. One MLT is used to connect this stack to the core via the Gigabit MDA's in each BayStack 450. Each server is equipped with dual 10/100 network interface controllers (NICs) and will connect via MLT to the BayStack 450. How many servers can be supported on this switch in this scenario?

A. 2

B. 3

C. 4

D. 5

Answer: D

14. A large telecommunications equipment manufacturer wants a routing protocol solution for their network of Passport 8600 and 1648T routing switches.

The company has provided you with their routing protocol requirements:

Capable of managing a maximum hop count of 15.

Supports Variable Length Subnet Masks (VLSM) and Classless Inter-Domain Routing (CIDR) for IP optimization.

Provides quick convergence of routing changes.

Supports routing authentication.

Provides logical grouping of routers.

What routing protocol will you recommend to the company?

A. RIP v2

B. BGP-4

C. RIP v1

D. OSPF

Answer: D

15. A technician replaced the fan tray in a fully loaded Passport 8600 in a total of 60 seconds. What was the minimum possible effect on packet forwarding during the time required to complete the replacement?

- A. No effect.
- B. Forwarding stopped for 60 seconds.
- C. Packets received during 60 second interval will be lost.
- D. Packets received during 60 second interval will be tagged for resend.

Answer: A

Visualexams.com was founded in 2006. The safer,easier way to help you pass any IT Certification exams . We provide high quality IT Certification exams practice questions and answers(Q&A). Especially Adobe, Apple, Citrix, Comptia, EMC, HP, HuaWei, LPI, Nortel, Oracle, SUN, Vmware and so on. And help you pass any IT Certification exams at the first try.

Web site: <http://www.visualexams.com>

You can reach us at any of the email addresses listed below.

E-Mail: [visualexams \(at\) hotmail.Com](mailto:visualexams@hotmail.com)