

Exam : Cisco 642-964

**Title : Cisco Data Center
Networking Infrastructure
Support**

Version : Demo

Important Note, Please Read Carefully

Other VisualExams products

[All visualexams IT Exam Products](#)

Our products of Offline Testing Engine

Use the offline Testing engine product to practice the questions in an exam environment.

Build a foundation of knowledge which will be useful also after passing the exam.

[visualexams Testing Engine](#)

Latest Version

We are constantly reviewing our products. New material is added and old material is revised. Free updates are available for 90 days after the purchase. You should check your member zone at VisualExams and update 3-4 days before the scheduled exam date.

Here is the procedure to get the latest version:

1. Go to <http://www.visualexams.com/>
2. Log in the **User Center**
3. The latest versions of all purchased products are downloadable from here. Just click the links.

Feedback

If you spot a possible improvement then please let us know. We always interested in improving product quality.

Feedback should be send to Visualexams@hotmail.com. You should include the following: Exam number, version, page number, question number, and your login Account.

Our experts will answer your mail promptly.

Explanations

This product does not include explanations at the moment. If you are interested in providing explanations for this exam, please contact Visualexams@hotmail.com.

Features

- Comprehensive questions with complete details
- Instant Downloadable in PDF form.
- Verified Answers Researched by Industry Experts
- Questions accompanied by exhibits.
- Drag and Drop questions as experienced in the Actual Exams.
- These questions and answers are backed by our GUARANTEE.
- Questions updated on regular basis.
- Like actual certification exams our product is in multiple-choice questions (MCQs)

Commitment to Your Success: At VisualTestExam.com, we are committed to you ongoing success. Our exams and questions are constantly being updated and compared to industry standards.

Want to earn a Microsoft certification like [MCSE](#), [MCSE 2003](#), [CCNA](#), [CCNP](#)? Thinking about getting an [A+](#) or [CCSP](#)?

A, [CCSP](#) or [Network+](#) Certification with less effort and time. You will be astonished at the theoretical and practical knowledge you will acquire in such a short period of time using our Certification Training Products. Our Study material will enable you to pass your [Microsoft](#), Your [Cisco](#) and any other certification on the very first attempt.

Guarantee

VisualExams provides the most competitive quality of all exams for the customers, we guarantee your success at the first attempt with only our Certification Question&Answers, if somehow you do not pass the exam at the first time, we will not only arrange FULL REFUND for you, but also provide you another exam of your claim, ABSOLUTELY FREE!

1. What will be upgraded as a result of this command?

```
upgrade ftp://ftpuser@10.1.2.3//upgrade/IPS-K9-r-1.1-a-5.1-1.pkg
```

- A. recovery partition
- B. application partition
- C. both application and recovery partitions immediately
- D. both application and recovery partitions at the next scheduled automatic IDSM update

Answer: A

2. On a Cisco Catalyst 6500 Series Switch, how many physical links can be aggregated into an EtherChannel group?

- A. 4
- B. 8
- C. 16
- D. 32

Answer: B

3. How would you configure a NAM to monitor and report the most heavily viewed sections of a website?

- A. Create a separate domain name or virtual server IP address for each section of the site. Add each domain name or IP address to the NAM application protocol directory.
- B. Enable regular-expression pattern matching. Define application protocol filters based on regular expressions that match the desired URLs.
- C. Enable URL monitoring. Define each desired URL as an application in the protocol directory.
- D. Use SPAN or VACLs to capture upper-layer protocol data from the web servers. Use a third-party application to parse the stored capture files.

Answer: C

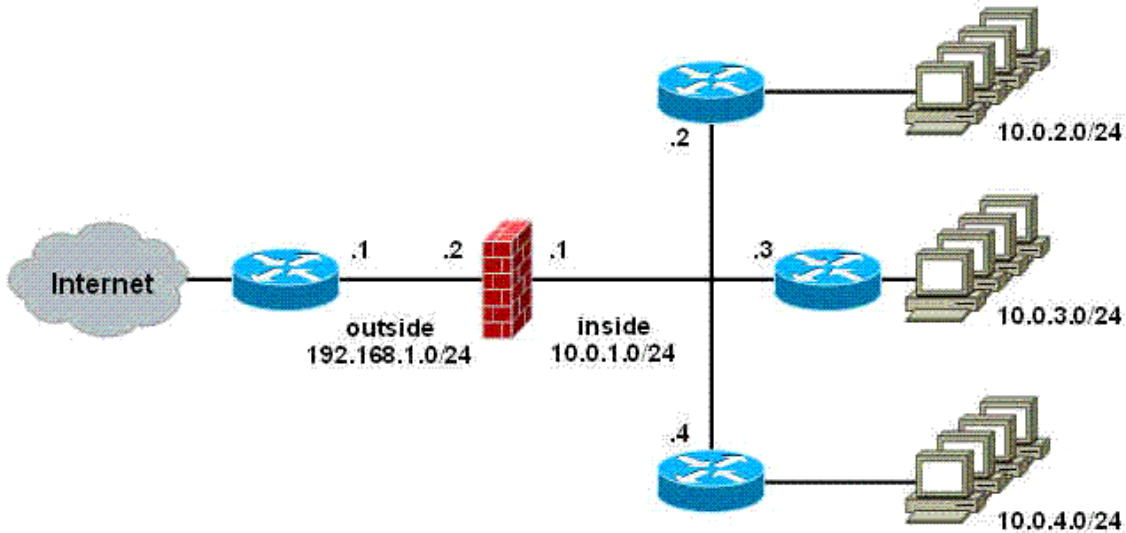
4. How can you configure the NAM to view a list of all switches that are sending NDE packets?

- A. Enter the command `sh data-source nde`.
- B. Configure Cisco Discovery Protocol to detect all switches on the network.
- C. Launch NetFlow Listening Mode from the Cisco Traffic Analyzer application.

D. The NAM will automatically detect NDE broadcasts and add each switch to the NetFlow device table.

Answer: C

5. Refer to the exhibit. Which FWSM command allows routing of TCP traffic from the Internet to network 10.0.3.0/24?



- A. `access-list inside permit tcp 192.168.1.0 255.255.255.0 10.0.3.0 255.255.255.0`
- B. `route inside 10.0.3.0 255.255.255.0 10.0.1.3`
- C. `route outside 10.0.3.0 255.255.255.0 10.0.1.3`
- D. `route inside 0 0 10.0.1.3`

Answer: B

6. Which command must be issued to activate the FWSM firewall context?

- A. `allocate-vlan`
- B. `config-url`
- C. `limit-resource`
- D. `map-interface`

Answer: B

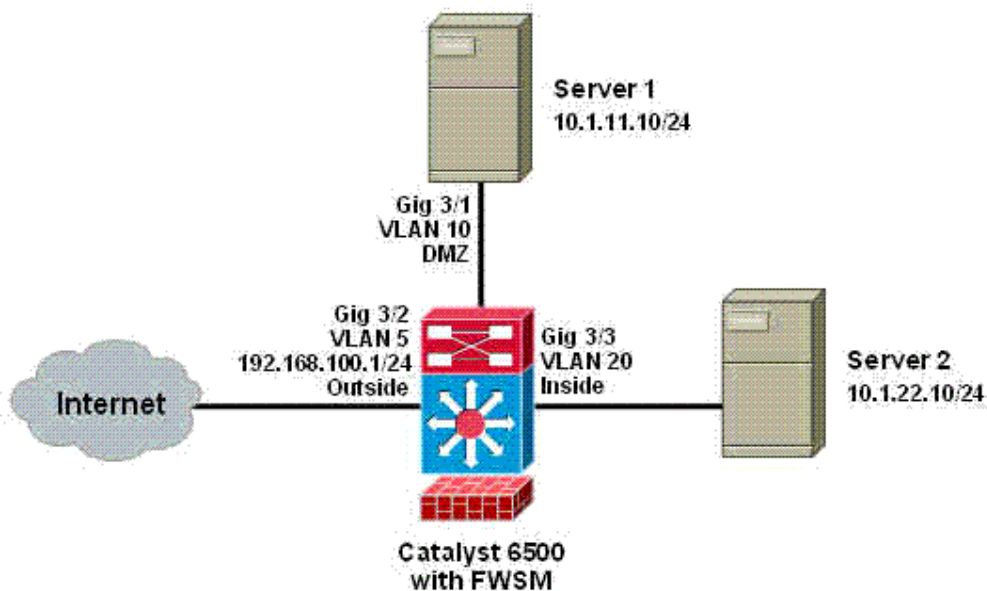
7. The IDSM management-interface IP address can be configured from which prompt?

- A. `IDSM(config)#`
- B. `IDSM(config-hos-net)#`
- C. `IDSM(config-mgmt)#`

D. IDSM(config-if)#

Answer: B

8. Refer to the exhibit. Which command would you use on the FWSM to provide a default route from Servers 1 and 2 to the Internet?



- A. route inside 0 0 192.168.100.1
- B. route inside 10.1.0.0 255.255.0.0 192.168.1.1
- C. route outside 0 0 192.168.100.1
- D. route outside 10.1.0.0 255.255.0.0 192.168.1.1

Answer: C

9. Which statement is correct regarding Layer 3 EtherChannels?

- A. They are STP-aware.
- B. They cannot be automatically negotiated.
- C. Multiple EtherChannels are used between a pair of switches.
- D. Multiple EtherChannels between two switches create an STP loop.

Answer: C

10. What is the effect of executing the command intrusion-detection module 5 management-port access-vlan 10 on an IDSM?

- A. allows the IDS/IPS to be managed by devices in VLAN 10
- B. configures the IDS/IPS to monitor traffic from VLAN 10 in in-line mode
- C. allows the IDS/IPS to perform blocking actions on devices in VLAN 10
- D. configures the IDS/IPS to monitor traffic from VLAN 10 in promiscuous mode

Answer: A

Visualexams.com was founded in 2006. The safer,easier way to help you pass any IT Certification exams . We provide high quality IT Certification exams practice questions and answers(Q&A). Especially Adobe, Apple, Citrix, Comptia, EMC, HP, HuaWei, LPI, Nortel, Oracle, SUN, Vmware and so on. And help you pass any IT Certification exams at the first try.

Web site: <http://www.visualexams.com>

You can reach us at any of the email addresses listed below.

E-Mail: [visualexams \(at\) hotmail.Com](mailto:visualexams@hotmail.com)