

Exam : Cisco 642-961

**Title : Cisco Data Center
Networking Infrastructure
Solutions Design**

Version : Demo

Important Note, Please Read Carefully

Other VisualExams products

[All visual exams IT Exam Products](#)

Our products of Offline Testing Engine

Use the offline Testing engine product to practice the questions in an exam environment.

Build a foundation of knowledge which will be useful also after passing the exam.

[visual exams Testing Engine](#)

Latest Version

We are constantly reviewing our products. New material is added and old material is revised. Free updates are available for 90 days after the purchase. You should check your member zone at VisualExams and update 3-4 days before the scheduled exam date.

Here is the procedure to get the latest version:

1. Go to <http://www.visual exams.com/>
2. Log in the **User Center**
3. The latest versions of all purchased products are downloadable from here. Just click the links.

Feedback

If you spot a possible improvement then please let us know. We always interested in improving product quality.

Feedback should be send to Visual exams@hotmail.com. You should include the following: Exam number, version, page number, question number, and your login Account.

Our experts will answer your mail promptly.

Explanations

This product does not include explanations at the moment. If you are interested in providing explanations for this exam, please contact Visual exams@hotmail.com.

Features

- Comprehensive questions with complete details
- Instant Downloadable in PDF form.
- Verified Answers Researched by Industry Experts
- Questions accompanied by exhibits.
- Drag and Drop questions as experienced in the Actual Exams.
- These questions and answers are backed by our GUARANTEE.
- Questions updated on regular basis.
- Like actual certification exams our product is in multiple-choice questions (MCQs)

Commitment to Your Success: At VisualTestExam.com, we are committed to you ongoing success. Our exams and questions are constantly being updated and compared to industry standards.

Want to earn a Microsoft certification like MCSE, MCSE 2003, CCNA, CCNP? Thinking about getting an A+ or CCSP?

A, CCSP or Network+ Certification with less effort and time. You will be astonished at the theoretical and practical knowledge you will acquire in such a short period of time using our Certification Training Products. Our Study material will enable you to pass your Microsoft, Your Cisco and any other certification on the very first attempt.

Guarantee

Visualexams provides the most competitive quality of all exams for the customers, we guarantee your success at the first attempt with only our Certification Question&Answers, if somehow you do not pass the exam at the first time, we will not only arrange FULL REFUND for you, but also provide you another exam of your claim, ABSOLUTELY FREE!

1. Which statement best describes the data center core layer?

- A. connects to the campus aggregation layer
- B. provides a resilient Layer 2 routed fabric
- C. is typically merged with the campus core layer
- D. load balances traffic between the core and aggregation layers

Answer: D

2. Which type of network in an HPC environment most requires low latency?

- A. MPI
- B. access
- C. private
- D. storage

Answer: A

3. Which type of HPC application requires low latency?

- A. financial analytics
- B. finite element analysis
- C. digital image rendering
- D. seismic and geophysical modeling

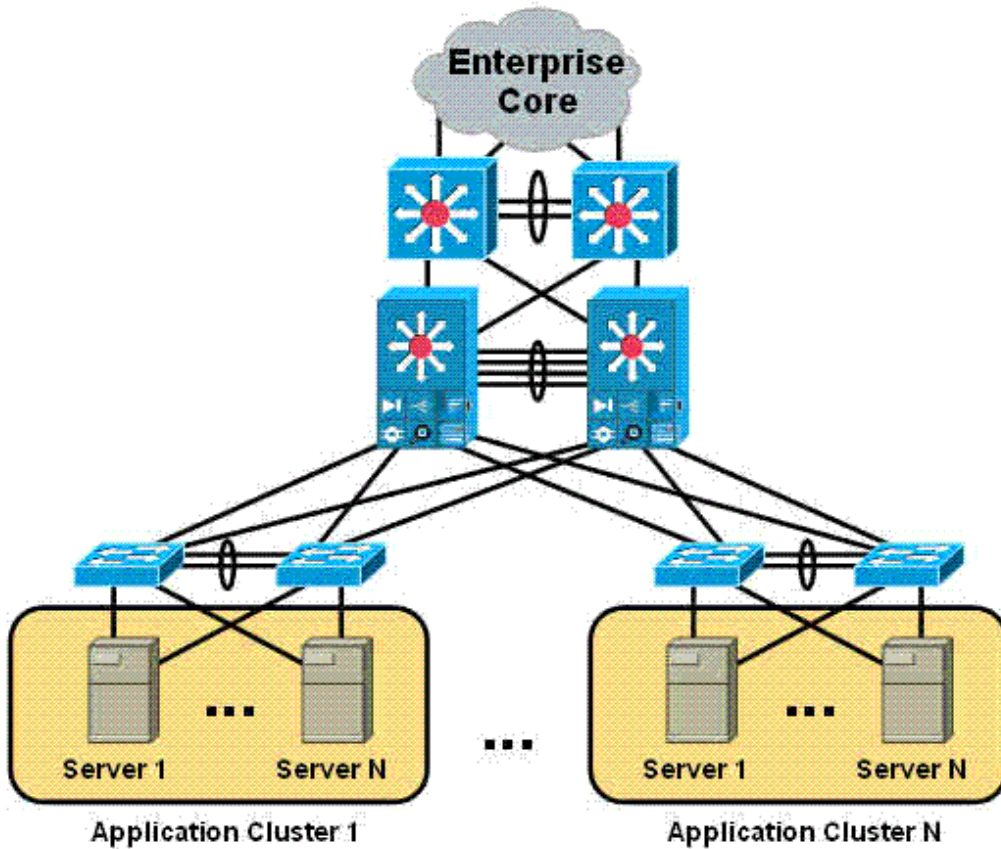
Answer: B

4. A very large blade-server deployment has high throughput requirements for both data and storage networks. Which access layer option would you recommend?

- A. blade server Ethernet switch with Cisco SFS 3000 Series Multifabric Switch
- B. blade server InfiniBand switch with Cisco SFS 3000 Series Multifabric Switch
- C. blade server Ethernet switch that is connected to Cisco Catalyst 4948 top-of-rack switch
- D. blade server Ethernet switch that is connected to Cisco Catalyst 6500 Series end-of-rack switch

Answer: B

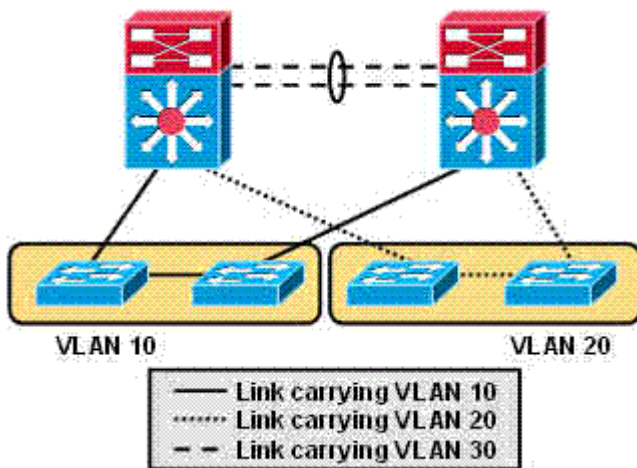
5. Refer to the exhibit. Where is Layer 2 adjacency required?



- A. server-to-server only
- B. access-to-server only
- C. aggregation-to-access only
- D. aggregation-to-access and access-to-server

Answer: B

6. Refer to the exhibit. What is a feature of this spanning-tree topology?



- A. VLANs are not restricted to access-switch pairs.

- B. Only one aggregation-to-access uplink is active at a given time.
- C. If the link between access-switch pairs is broken, the return IP path may be broken.
- D. Uplink failures on access layer switches will not break connectivity between servers and service modules in the aggregation layer.

Answer: C

7. How is FCIP traffic marked with DSCP values?

- A. The Cisco MDS 9000 Series Multilayer Switch marks one DSCP value per FCIP tunnel.
- B. The Cisco MDS 9000 Series Multilayer Switch marks two DSCP values per FCIP tunnel.
- C. The aggregation layer Ethernet switch marks one DSCP value per FCIP tunnel.
- D. The aggregation layer Ethernet switch marks two DSCP values per FCIP tunnel.

Answer: B

8. Which of the following attack types should be mitigated in the data center core layer?

- A. port scans
- B. IP spoofing
- C. DDoS attacks
- D. MAC address spoofing

Answer: C

9. Which statement is correct about the Cisco Catalyst 4948 Switch?

- A. is nonblocking
- B. performs only Layer 2 switching
- C. has up to 48-Gbps wire-speed performance
- D. balances lower cost with lower-performance access layer switching

Answer: A

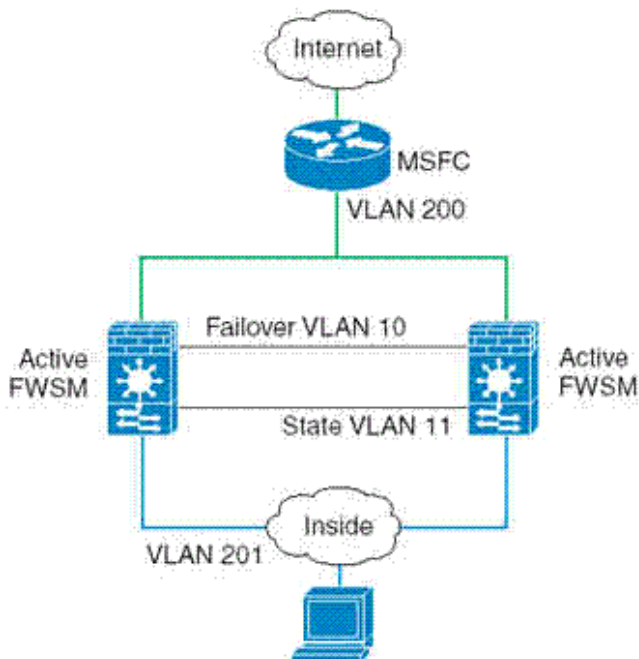
10. Which statement describes an IDSM module operating in inline rather than promiscuous mode?

- A. lower latency
- B. higher latency

- C. lower throughput
- D. higher throughput
- E. higher latency and lower throughput
- F. lower latency and higher throughput

Answer: B

11. Refer to the exhibit. What do you need to configure to prevent spanning-tree loops from occurring between the two FWSMs?



- A. FWSMs in transparent mode
- B. ethertype ACLs to allow BPDUs
- C. FWSMs in multiple-context mode
- D. failover and state interfaces on the same VLAN

Answer: B

12. How many FWSM modules are needed to support 8 Gbps of throughput through an aggregation module?

- A. one
- B. two
- C. four
- D. eight

Answer: B

13. What advantage do 10-Gigabit Ethernet uplinks have over EtherChannels?

- A. more reliable
- B. higher bandwidth
- C. faster convergence time
- D. better load balancing of traffic

Answer: D

14. According to Cisco best practice, which service module should be placed in service switches within the aggregation layer?

- A. NAM
- B. CSM
- C. IDSM
- D. FWSM

Answer: B

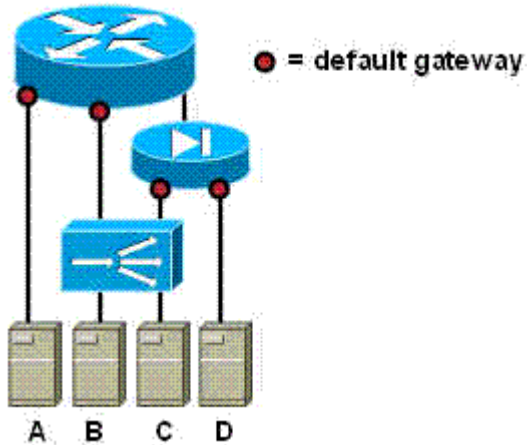
15. What is the total bandwidth available to a Cisco Catalyst 6500 Series CEF720 line card?

- A. 16 Gbps
- B. 20 Gbps
- C. 32 Gbps
- D. 40 Gbps
- E. 48 Gbps

Answer: D

16. Refer to the exhibit.

Each letter (A-D) represents a model for placement of a default gateway. Which model allows the maximum number of application and security services?



- A. model A
- B. model B
- C. model C
- D. model D

Answer: C

17. Which three of the following service modules can be deployed in redundant pairs with active/active failover? (Choose three.)

- A. ACE
- B. CSM
- C. NAM
- D. IDSM
- E. FWSM
- F. SSLSM

Answer: ADE

18. What is the Cisco best-practice recommendation for the maximum number of HSRP instances per aggregation module?

- A. 3
- B. 30
- C. 300
- D. no recommended maximum

Answer: C

19. Which security technique would you use to protect servers from SYN-flooding DoS attacks?

- A. uRPF
- B. TCP intercept
- C. TCP RPF check
- D. drop and shutdown thresholds

Answer: B

20. Which data center network-architecture change is a result of the adoption of blade and 1-RU server technologies?

- A. Layer 3 fault domains growing larger
- B. Layer 2 fault domains growing larger
- C. Layer 3 fault domains growing smaller
- D. Layer 2 fault domains growing smaller

Answer: B

Visualexams.com was founded in 2006. The safer,easier way to help you pass any IT Certification exams . We provide high quality IT Certification exams practice questions and answers(Q&A). Especially Adobe, Apple, Citrix, Comptia, EMC, HP, HuaWei, LPI, Nortel, Oracle, SUN, Vmware and so on. And help you pass any IT Certification exams at the first try.

Web site: <http://www.visualexams.com>

You can reach us at any of the email addresses listed below.

E-Mail: [visualexams \(at\) hotmail.Com](mailto:visualexams@hotmail.com)