

Exam : Cisco 642-582

**Title : Wireless LAN for Field
Engineers Exam**

Version : Demo

Important Note, Please Read Carefully

Other VisualExams products

[All visualexams IT Exam Products](#)

Our products of Offline Testing Engine

Use the offline Testing engine product to practice the questions in an exam environment.

Build a foundation of knowledge which will be useful also after passing the exam.

[visualexams Testing Engine](#)

Latest Version

We are constantly reviewing our products. New material is added and old material is revised. Free updates are available for 90 days after the purchase. You should check your member zone at VisualExams and update 3-4 days before the scheduled exam date.

Here is the procedure to get the latest version:

1. Go to <http://www.visualexams.com/>
2. Log in the **User Center**
3. The latest versions of all purchased products are downloadable from here. Just click the links.

Feedback

If you spot a possible improvement then please let us know. We always interested in improving product quality.

Feedback should be send to Visualexams@hotmail.com. You should include the following: Exam number, version, page number, question number, and your login Account.

Our experts will answer your mail promptly.

Explanations

This product does not include explanations at the moment. If you are interested in providing explanations for this exam, please contact Visualexams@hotmail.com.

Features

- Comprehensive questions with complete details
- Instant Downloadable in PDF form.
- Verified Answers Researched by Industry Experts
- Questions accompanied by exhibits.
- Drag and Drop questions as experienced in the Actual Exams.
- These questions and answers are backed by our GUARANTEE.
- Questions updated on regular basis.
- Like actual certification exams our product is in multiple-choice questions (MCQs)

Commitment to Your Success: At VisualTestExam.com, we are committed to you ongoing success. Our exams and questions are constantly being updated and compared to industry standards.

Want to earn a Microsoft certification like MCSE, MCSE 2003, CCNA, CCNP? Thinking about getting an A+ or CCSP?

A, CCSP or Network+ Certification with less effort and time. You will be astonished at the theoretical and practical knowledge you will acquire in such a short period of time using our Certification Training Products. Our Study material will enable you to pass your Microsoft, Your Cisco and any other certification on the very first attempt.

Guarantee

Visualexams provides the most competitive quality of all exams for the customers, we guarantee your success at the first attempt with only our Certification Question&Answers, if somehow you do not pass the exam at the first time, we will not only arrange FULL REFUND for you, but also provide you another exam of your claim, ABSOLUTELY FREE!

1. In Cisco's server-based authentication security scheme, what device is used as the supplicant of the system?

- A. client
- B. switch
- C. Access Point
- D. authentication server

Answer: A

2. Which three settings in a repeater Access Point are necessary to match the root Access Point? (Choose three.)

- A. SSID
- B. DNS name
- C. IP address
- D. Radio Channel
- E. WEP configuration
- F. Role in radio network

Answer: ADE

3. What is the benefit of spread spectrum technology OFDM modulation?

- A. Range improves as data rates increases.
- B. It makes 802.11g and 802.11a interoperable.
- C. It requires less spectral bandwidth than CCK modulation.
- D. It has better performance for multipath interference than CCK modulation.

Answer: D

4. The Cisco Aironet 1400 Series Bridge has a full duplex 100 Mbps interface using _____.

- A. two 75 Ohm "F" style connectors
- B. two 50 Ohm "N" style connectors
- C. two 75 Ohm "N" style connectors
- D. two 50 Ohm "RP-TNC" style connectors

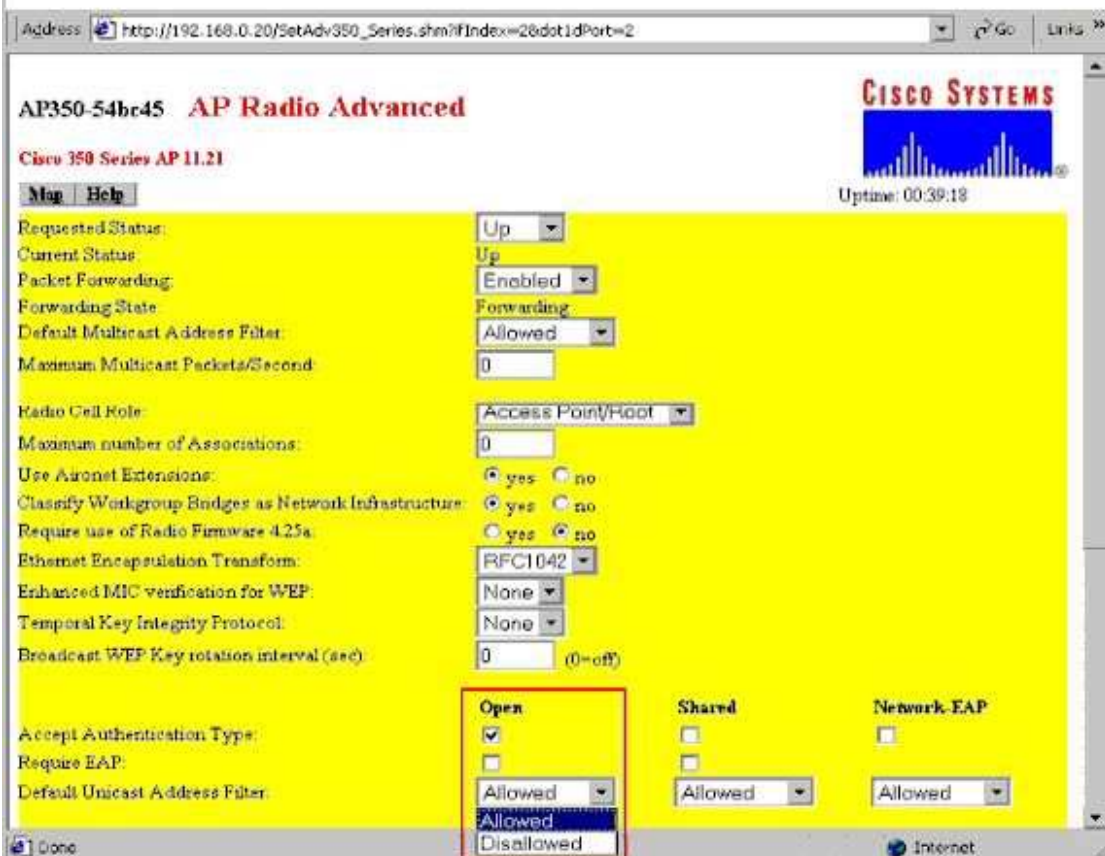
Answer: A

5. An 802.11b radio utilizes how much of the 2.4 GHz ISM band for transmission?

- A. 1 MHz
- B. 11 MHz
- C. 22 MHz
- D. 83.5 MHz

Answer: C

6. You have a wireless LAN that you want to set up to stop traffic generated from one client on the RF. You have decided to set up a filter. What do you need to set up on the exhibits?



- A. Address Filter page: Allowed; Access Point Radio Advanced page: Allowed
- B. Address Filter page: Disallowed; Access Point Radio Advanced page: Allowed
- C. Address Filter page: Allowed; Access Point Radio Advanced page: Disallowed
- D. Address Filter page: Disallowed; Access Point Radio Advanced page: Disallowed

Answer: B

7. How many 2.4 GHz RF channels for DSSS are available in Japan?

- A. 2
- B. 9
- C. 11
- D. 13
- E. 14

Answer: E

8. Which program can be used to push profiles out to multiple Cisco Aironet clients?

- A. ACU
- B. ADU
- C. ACM
- D. ACAU

Answer: D

9. The Cisco Aironet 802.11a/b/g Wireless LAN Client Adapter has two LEDs. Which two indicate that the card is working properly (not necessarily associated)? (Choose two.)

- A. green LED off; amber LED solid
- B. green LED off; amber LED blinking sporadically
- C. green LED blinking fast; amber LED blinking sporadically
- D. green LED blinking slowly; amber LED blinking sporadically

Answer: CD

10. What can you do to reduce unnecessary traffic from being transmitted across the RF from an Access Point?

- A. enable packet filtering
- B. enable MAC address authentication
- C. set the buffer size in the Access Point to a lower value

D. reduce the cell size by setting the transmit power to a lower setting

Answer: A

11. What does an Infrastructure AP use when registering with the WDS AP?

- A. LEAP
- B. PEAP
- C. EAP-TLS
- D. Static WEP

Answer: A

12. What two do Wireless Site Surveys determine? (Choose two.)

- A. the size of a cell
- B. the throughput of a cell
- C. the data rate / range relationship in a cell
- D. the number of users that can associate to the AP

Answer: AC

13. Which three values are required to be configured in ACS when adding an AP to the ACS database?

(Choose three.)

- A. broadcast WEP key
- B. RADIUS shared secret
- C. AP hostname or IP address
- D. session key expiration interval
- E. unique name for AP (AAA client) in ACS database

Answer: BCE

14. What DC voltage is used to power the Access Points through the use of in-line power to the Ethernet port?

- A. -5 VDC
- B. -9 VDC

C. -12 VDC

D. -48 VDC

Answer: D

15. Which three display modes are useful for determining the actual test AP coverage boundary? (Choose three.)

A. Speed

B. S/N Ratio

C. Signal Level

D. Packet Decode

E. Channel Scanning

Answer: ABC

16. What is the optimal way to deal with both public and private networks in the same wireless cell?

A. use VLANs

B. use diversity antenna systems

C. install two APs per cell and configure separate QoS

D. install two APs per cell and configure load balancing

Answer: A

17. When setting up a wireless repeater what should the variable "role in radio network" be configured as?

A. root

B. client

C. bridge

D. non-root

Answer: D

18. Which two steps are used to set up Fast Secure Roaming? (Choose two.)

A. configure the WDS options on the client

B. configure Fast Roaming parameters of the WLSE Server

- C. enable APs on the subnet to allow CCKM authenticated key management for at least one SSID
- D. configure the authentication server to authenticate the WDS AP and the APs that use the WDS AP

Answer: CD

19. A customer has an installed 4-mile wireless link using Cisco Aironet 350 Series wireless bridges in the U.S. It is currently running at 2 Mb, with 13.5 Yagi antennas (vertically polarized), and 50 ft. of Cisco cabling on each side. The customer now needs the wireless pipe to be increased to 11 Mb. The cabling cannot be shortened due to physical limitations. What can be done legally to make this a solid 11 Mb pipe?

- A. utilize an amplifier on each site
- B. replace the Yagis with dish antennas
- C. rotate the antennas 90 degrees and use horizontal polarization
- D. increase the power output of the radios using firmware 10.10T or greater

Answer: B

20. Local Authentication Service on the Cisco Access Point allows a maximum of how many users?

- A. 10
- B. 25
- C. 50
- D. 100

Answer: C

Visualexams.com was founded in 2006. The safer,easier way to help you pass any IT Certification exams . We provide high quality IT Certification exams practice questions and answers(Q&A). Especially Adobe, Apple, Citrix, Comptia, EMC, HP, HuaWei, LPI, Nortel, Oracle, SUN, Vmware and so on. And help you pass any IT Certification exams at the first try.

Web site: <http://www.visualexams.com>

You can reach us at any of the email addresses listed below.

E-Mail: [visualexams \(at\) hotmail.Com](mailto:visualexams@hotmail.com)