

Exam : Cisco 642-383

**Title : Cisco Express Foundation
for Field Engineers**

Version : Demo

Important Note, Please Read Carefully

Other VisualExams products

[All visual exams IT Exam Products](#)

Our products of Offline Testing Engine

Use the offline Testing engine product to practice the questions in an exam environment.

Build a foundation of knowledge which will be useful also after passing the exam.

[visual exams Testing Engine](#)

Latest Version

We are constantly reviewing our products. New material is added and old material is revised. Free updates are available for 90 days after the purchase. You should check your member zone at VisualExams and update 3-4 days before the scheduled exam date.

Here is the procedure to get the latest version:

1. Go to <http://www.visual exams.com/>
2. Log in the **User Center**
3. The latest versions of all purchased products are downloadable from here. Just click the links.

Feedback

If you spot a possible improvement then please let us know. We always interested in improving product quality.

Feedback should be send to Visual exams@hotmail.com. You should include the following: Exam number, version, page number, question number, and your login Account.

Our experts will answer your mail promptly.

Explanations

This product does not include explanations at the moment. If you are interested in providing explanations for this exam, please contact Visual exams@hotmail.com.

Features

- Comprehensive questions with complete details
- Instant Downloadable in PDF form.
- Verified Answers Researched by Industry Experts
- Questions accompanied by exhibits.
- Drag and Drop questions as experienced in the Actual Exams.
- These questions and answers are backed by our GUARANTEE.
- Questions updated on regular basis.
- Like actual certification exams our product is in multiple-choice questions (MCQs)

Commitment to Your Success: At VisualTestExam.com, we are committed to you ongoing success. Our exams and questions are constantly being updated and compared to industry standards.

Want to earn a Microsoft certification like MCSE, MCSE 2003, CCNA, CCNP? Thinking about getting an A+ or CCSP?

A, CCSP or Network+ Certification with less effort and time. You will be astonished at the theoretical and practical knowledge you will acquire in such a short period of time using our Certification Training Products. Our Study material will enable you to pass your Microsoft, Your Cisco and any other certification on the very first attempt.

Guarantee

VisualExams provides the most competitive quality of all exams for the customers, we guarantee your success at the first attempt with only our Certification Question&Answers, if somehow you do not pass the exam at the first time, we will not only arrange FULL REFUND for you, but also provide you another exam of your claim, ABSOLUTELY FREE!

1. Which of the following best describe the customer benefits of change management in the operate phase?

- A. reduce unnecessary disruption, delays, rework, and other problems by establishing test cases for use in verifying that the system meets operational, functional, and interface requirements
- B. improve its ability to make sound financial decisions by developing a business case based on its business requirements and establishing a basis for developing a technology strategy
- C. reduce operating costs and limit change-related incidents by providing a consistent and efficient set of processes
- D. improve the return on investment and hasten migration by identifying and planning for necessary infrastructure changes and resource additions, as well as reduce deployment costs by analyzing gaps early in the planning process to determine what is needed to support the system

Answer: C

2. Which of these is the best definition of the Cisco Lifecycle Services approach?

- A. It defines the minimum set of services required to successfully deploy and operate a set of Cisco technologies.
- B. It determines how best to price Cisco products.
- C. It provides partners with a useful way to leverage Cisco resources.
- D. It consists of these phases: plan, deploy, support, and troubleshoot.

Answer: A

3. What two types of telephony interfaces are used for PSTN connectivity? (Choose two.)

- A. Digital
- B. Optical
- C. Analog
- D. CDMA

Answer: AC

4. Which statement correctly describes the keyswitch model of deployment for call processing?

- A. All IP Phones are able to answer any incoming PSTN call on any line.

- B. PSTN calls are routed through a receptionist or automated attendant.
- C. All IP Phones in the system have a single unique extension number.

Answer: A

5. Which definition best describes the implementation service component within the implement phase?

- A. providing a step-by-step plan that details the installation and service-commission tasks required in order to create a controlled-implementation environment that emulates a customer network
- B. assessing the ability of site facilities to accommodate proposed infrastructure changes
- C. developing and executing proof-of-concept tests, validating high-level infrastructure design, and identifying any design enhancements
- D. installing, configuring, and integrating systems components based on an implementation plan developed in earlier phases
- E. improving a customer's infrastructure security system

Answer: D

6. A customer with a small enterprise network of 15 remote sites is trying to optimize its VPN by migrating some remote sites using Frame Relay connections to the Internet to using cable connections to the Internet. Minimizing costs is one of the customer's highest priorities. Only a moderate amount of IP traffic is passing through the network, most of which is from the remote sites to the central site. IPSec should be used to provide VPN functionality and basic confidentiality is desired.

Based on the traffic patterns, which topology would be the easiest for this customer to set up and manage?

- A. full mesh
- B. partial mesh
- C. point-to-multipoint
- D. hub-and-spoke

Answer: D

7. How can the proper configuration of Voice Mail be tested at an end user's IP phone?

- A. Press the "i" button.

- B. Press the "Settings" button.
- C. Press the "Services" button.
- D. Press the "Messages" button.

Answer: D

8. In what location is it recommended that the Cisco Catalyst 6500 Series WLSM be placed?

- A. distribution layer
- B. core layer
- C. access layer
- D. network management functional module

Answer: A

9. Which of these is an accurate list of Cisco Lifecycle Services phases?

- A. initiation, planning, analysis, design, development, implementation, operations and maintenance
- B. project planning, site assessment, risk assessment, solution selection and acquisition, testing, and operations
- C. prepare, plan, design, implement, operate, and optimize
- D. analysis, design, deployment, testing, implementation, and production
- E. presales, project planning, development, implementation, operations testing, and operations sign-off

Answer: C

10. What port role assignment would you make for the Gigabit Ethernet port on the Cisco CE520 used in the Smart Business Communications System?

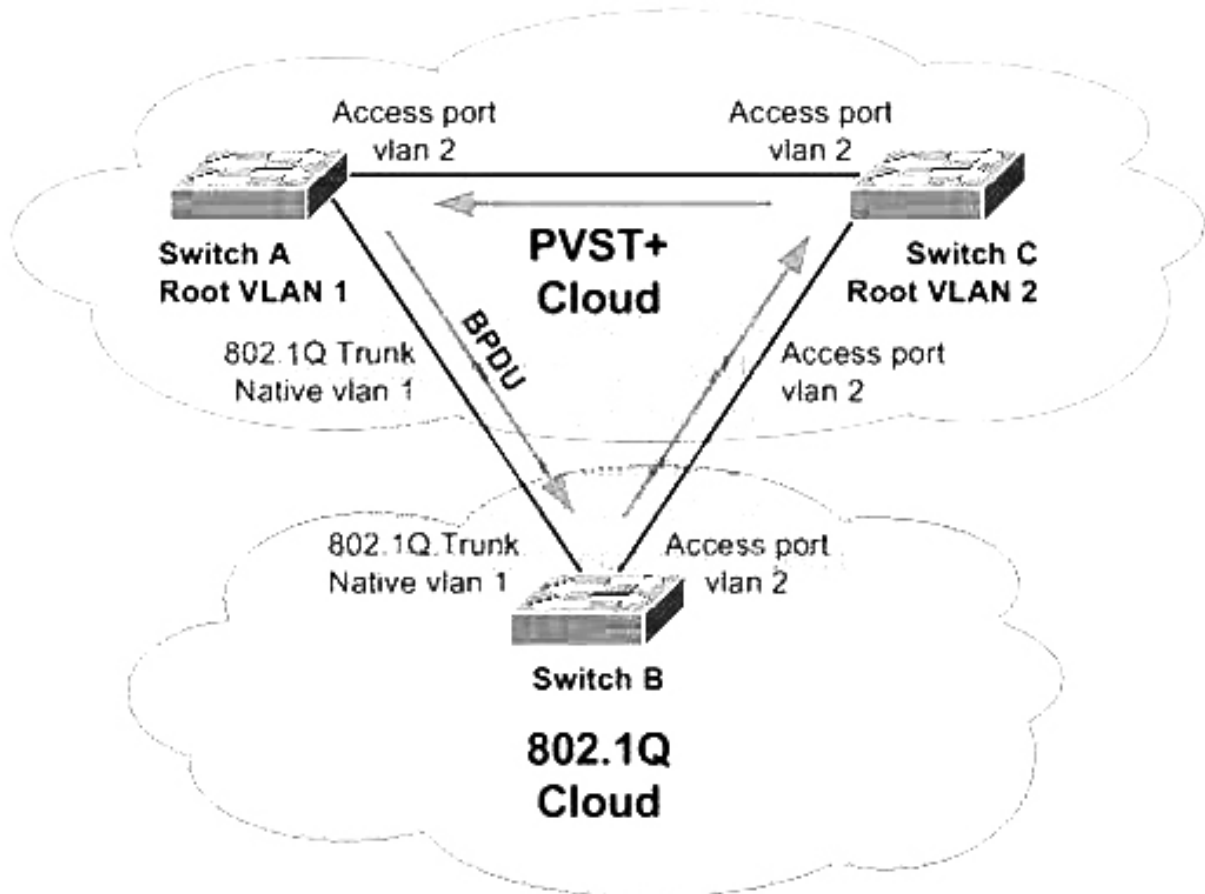
- A. IP Phone and desktop
- B. Cisco UC520
- C. Cisco CE520
- D. Cisco 871W

Answer: B

11. Refer to the exhibit. Switches A and C are running PVST+ STP, and Switch B is running 802.1Q STP. If

the BPDU of the root in VLAN 1 is better than the BPDU of the root in VLAN 2, then there is no blocking port in the VLAN 2 topology. The BPDU of VLAN 2 never makes a "full circle" around the topology; it is replaced by the VLAN 1 BPDU on the B-C link, because B runs only one STP merged with VLAN 1 STP of PVST+. Thus, there is a forwarding loop.

What does PVST+ do to correct this?



- A. Switch A sends PVST+ BPDUs of VLAN 2 (to the SSTP address that is flooded by Switch B) towards Switch C. Switch C will put port C-B into a type-inconsistent state, which prevents the loop.
- B. Switch B sends PVST+ BPDUs of VLAN 1 (to the SSTP address that is flooded by Switch A) towards Switch C. Switch C will put port C-B into a type-inconsistent state, which prevents the loop.
- C. Switch C sends PVST+ BPDUs of VLAN 2 (to the SSTP address that is flooded by Switch B) towards Switch C. Switch A will put port C-B into a type-inconsistent state, which prevents the loop.
- D. Switch A sends PVST+ BPDUs of VLAN 1 (to the SSTP address that is flooded by Switch B) towards Switch B. Switch A will put port C-B into a type-inconsistent state, which prevents the loop.

Answer: A

12. Which interface on the Cisco UC520 is assigned an IP address either statically or through DHCP?

- A. WAN interface
- B. LAN interface
- C. Switchport
- D. PSTN Interface

Answer: A

13. Which benefit can be obtained by using the change management service component in the operate phase?

- A. reduced operating costs, due to a consistent framework for making necessary changes in an efficient and accountable manner
- B. greater accuracy, completeness, and timeliness of network configuration information
- C. notification provided to interested parties regarding problems that have been identified, and a system that scales with customer requirements
- D. improved system service quality and fewer disruptions

Answer: A

14. What are two ways to test the LAN connectivity on the Cisco CE520? (Choose two.)

- A. Ping the IP address of the Cisco-Data Access VLAN from the Cisco UC520 console.
- B. Ping the IP address of the Cisco-Data VLAN from a device attached to the Cisco CE520.
- C. Ping default gateway from the Cisco UC520.
- D. Ping the IP address of the Cisco-Voice VLAN from a device attached to the Cisco CE520.
- E. Ping default gateway from the Cisco CE520.
- F. Ping the IP address of the Cisco-Distribution VLAN from the Cisco UC520 console.

Answer: BD

15. Which statement correctly describes configuration of the VPN server?

- A. It requires definition of a Group ID for remote clients.
- B. It requires configuration of port settings for the VPN server on the Cisco UC520.
- C. It uses a preshared key for remote device authentication.

D. The WAN interface is preselected.

Answer: C

Visualexams.com was founded in 2006. The safer,easier way to help you pass any IT Certification exams . We provide high quality IT Certification exams practice questions and answers(Q&A). Especially Adobe, Apple, Citrix, Comptia, EMC, HP, HuaWei, LPI, Nortel, Oracle, SUN, Vmware and so on. And help you pass any IT Certification exams at the first try.

Web site: <http://www.visualexams.com>

You can reach us at any of the email addresses listed below.

E-Mail: [visualexams \(at\) hotmail.Com](mailto:visualexams@hotmail.com)