

Exam : Cisco 642-356

**Title : Cisco Storage Networking
Solutions Support Specialist**

Version : Demo

Important Note, Please Read Carefully

Other VisualExams products

[All visual exams IT Exam Products](#)

Our products of Offline Testing Engine

Use the offline Testing engine product to practice the questions in an exam environment.

Build a foundation of knowledge which will be useful also after passing the exam.

[visual exams Testing Engine](#)

Latest Version

We are constantly reviewing our products. New material is added and old material is revised. Free updates are available for 90 days after the purchase. You should check your member zone at VisualExams and update 3-4 days before the scheduled exam date.

Here is the procedure to get the latest version:

1. Go to <http://www.visual exams.com/>
2. Log in the **User Center**
3. The latest versions of all purchased products are downloadable from here. Just click the links.

Feedback

If you spot a possible improvement then please let us know. We always interested in improving product quality.

Feedback should be send to Visual exams@hotmail.com. You should include the following: Exam number, version, page number, question number, and your login Account.

Our experts will answer your mail promptly.

Explanations

This product does not include explanations at the moment. If you are interested in providing explanations for this exam, please contact Visual exams@hotmail.com.

Features

- Comprehensive questions with complete details
- Instant Downloadable in PDF form.
- Verified Answers Researched by Industry Experts
- Questions accompanied by exhibits.
- Drag and Drop questions as experienced in the Actual Exams.
- These questions and answers are backed by our GUARANTEE.
- Questions updated on regular basis.
- Like actual certification exams our product is in multiple-choice questions (MCQs)

Commitment to Your Success: At VisualTestExam.com, we are committed to your ongoing success. Our exams and questions are constantly being updated and compared to industry standards.

Want to earn a Microsoft certification like MCSE, MCSE 2003, CCNA, CCNP? Thinking about getting an A+ or CCSP?

A, CCSP or Network+ Certification with less effort and time. You will be astonished at the theoretical and practical knowledge you will acquire in such a short period of time using our Certification Training Products. Our Study material will enable you to pass your Microsoft, Your Cisco and any other certification on the very first attempt.

Guarantee

Visualexams provides the most competitive quality of all exams for the customers, we guarantee your success at the first attempt with only our Certification Question&Answers, if somehow you do not pass the exam at the first time, we will not only arrange FULL REFUND for you, but also provide you another exam of your claim, ABSOLUTELY FREE!

1. Which command would you use to determine if device aliases in VSAN 5 are configured for fabric-wide distribution?

- A. show zoneset name alias vsan 5
- B. show cfs application name device-alias
- C. show fcalias distribution vsan 5
- D. show vsan 5 device-alias status

Answer: B

2. The MDS 9000 family switches use what three technologies to protect against unauthorized management access? (Choose three.)

- A. SNMPv3
- B. SSH
- C. RBAC
- D. RMON
- E. SES
- F. WEBM

Answer: ABC

3. What is a benefit of enhanced zoning?

- A. fabric locked during configuration changes
- B. larger zoning database size
- C. database rollback in case of failure
- D. zones allowed to span VSANs

Answer: A

4. Which two of these environments suggest the use of FCIP Write Acceleration? (Choose two.)

- A. remote tape backup
- B. PortChannel links between sites
- C. applications that support multiple outstanding I/Os
- D. fast network with minimal delays

E. DWDM links

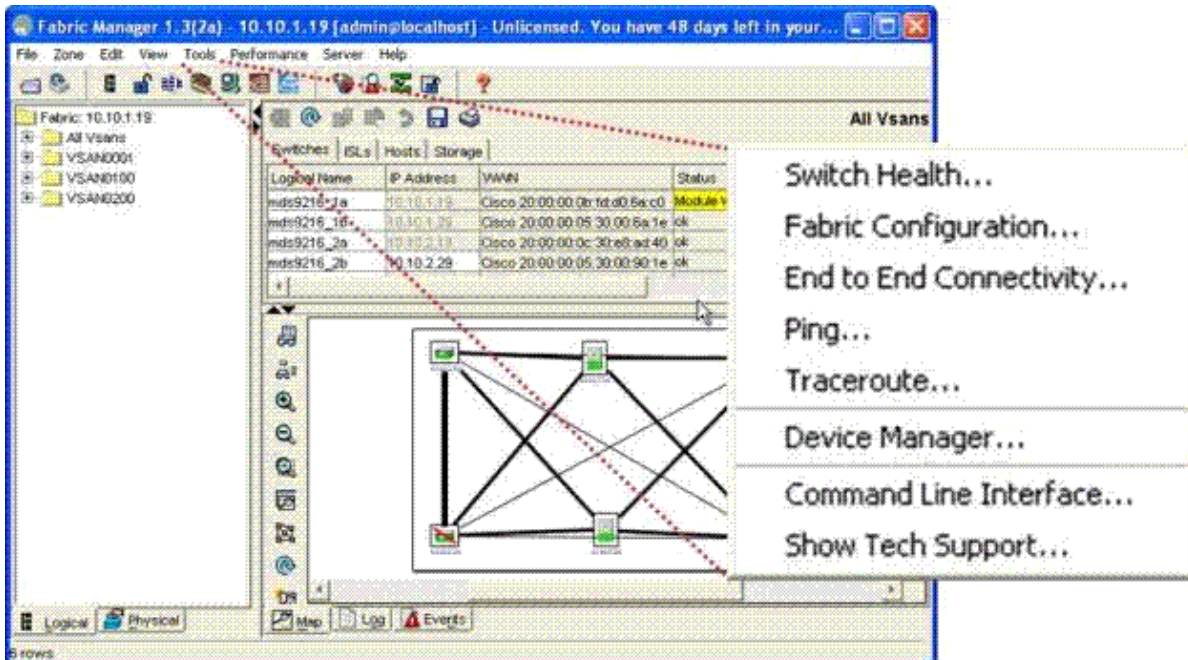
Answer: BC

5. Which three of the following are possible reasons why a line card module does not come online?
(Choose three.)

- A. Port indexes have been taken offline.
- B. Available port indexes are noncontiguous.
- C. Not enough power is available in the chassis.
- D. An invalid interoperability mode has been configured.
- E. Unsupported SFPs have been installed.
- F. Not enough port indexes are available.

Answer: BCF

6. Refer to the exhibit. Which two options from the Tools menu would you select to verify connectivity and latency to a Fibre Channel end device? (Choose two.)



- A. Switch Health
- B. Fabric Configuration
- C. End to End Connectivity
- D. Ping
- E. Device Manager

Answer: CD

7. During initial switch configuration, the administrator elects to enable full zoneset distribution. What is the impact of this choice during zoneset activation?

- A. only the active zoneset is distributed to all switches in the fabric
- B. both the full zone database and active zoneset are distributed to all switches in the fabric
- C. both FCID and WWN information are distributed to all switches in the fabric
- D. only the full zone database is distributed to all switches in the fabric

Answer: B

8. You are asked to review the running configuration of a switch that a junior administrator has prepared to be placed in a heterogeneous SAN environment. This environment includes three different brands of Fibre Channel switches. In this particular environment, only VSAN 1 is being used.

Which of these attributes suggests that the switch has been incorrectly configured?

- A. A static domain ID has been set to 0x21.
- B. The src-dst-ox load balancing has been selected.
- C. Interop mode 1 has been selected.
- D. FCC has been enabled.

Answer: A

9. What two commands must be executed on an MDS 9000 family switch in order to change a dynamically assigned Domain ID 5 to a static Domain ID 10 for VSAN 10? Choose two.

- A. switch(config-if)# shut fcdomain 5
- B. switch(config-if)# no shut fcdomain 10
- C. switch(config)# fcdomain domain 10
- D. switch(config)# fcdomain domain 10 static vsan 10
- E. switch(config)# fcdomain restart vsan 10
- F. switch(config)# fcdomain restart disruptive vsan 10

Answer: DF

10. When configuring FCIP, packet fragmentation should be avoided in order to achieve optimal throughput. Fragmentation can be avoided by knowing which of the following?

- A. MTU of the source IP interface
- B. largest MTU in the path
- C. smallest MTU in the path
- D. MTU of the destination IP interface

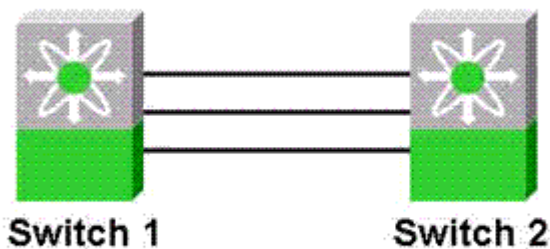
Answer: C

11. For purposes of granting restricted access to statically configure iSCSI virtual targets, which three of these can be used to identify iSCSI initiators? (Choose three.)

- A. iSCSI node name
- B. host name
- C. IPv4 address and subnet
- D. MAC address
- E. IPv6 address
- F. iSCSI WWN

Answer: ACE

12. You have been asked to convert three existing ISLs into a PortChannel as nondisruptively as possible. Which approach will best accomplish this?



- A. Place all three ISLs into a PortChannel, because PortChannel creation is a nondisruptive operation.
- B. Convert the ISLs into an EISL and then place them into a PortChannel.
- C. Place one link into a single-link PortChannel and then add the other two links to the PortChannel.

D. Ensure that the VSAN allowed lists on both ends of each link are identically configured, then create the three-link PortChannel.

Answer: C

13. Which three statements describe automatically supported, basic zone features (no additional configuration required) in the Cisco MDS 9000 Family of switches? (Choose three.)

- A. A VSAN contains the zone sets.
- B. Zone reactivation can disrupt existing traffic.
- C. A zone or zone set with the same name can exist in each VSAN.
- D. Hard zoning can be disabled.
- E. Active zone sets are preserved across switch reboots.
- F. Default zoning behavior is to distribute the Full Zone Database.

Answer: ACE

14. Which three options allow or enable nondisruptive upgrades? (Choose three.)

- A. IPS module software upgrades
- B. dual supervisor modules on a Cisco MDS 9500 Series switch
- C. using the install-all command
- D. upgrading the loader
- E. installing a license
- F. using the reload command

Answer: BCE

15. Which services are supported by a Cisco SAN-OS AAA configuration?

- A. Telnet, SSH, FM and DM logins
- B. console login, FC-SP authentication, FTP
- C. FC-SP authentication, FM and DM logins, TFTP
- D. iSCSI authentication, FTP, FC-SP authentication

Answer: A

Visualexams.com was founded in 2006. The safer,easier way to help you pass any IT Certification exams . We provide high quality IT Certification exams practice questions and answers(Q&A). Especially Adobe, Apple, Citrix, Comptia, EMC, HP, HuaWei, LPI, Nortel, Oracle, SUN, Vmware and so on. And help you pass any IT Certification exams at the first try.

Web site: <http://www.visualexams.com>

You can reach us at any of the email addresses listed below.

E-Mail: [visualexams \(at\) hotmail.Com](mailto:visualexams@hotmail.com)