

Exam : Cisco 642-342

Title : Content Networking Exam

Version : Demo

Important Note, Please Read Carefully

Other VisualExams products

[All visual exams IT Exam Products](#)

Our products of Offline Testing Engine

Use the offline Testing engine product to practice the questions in an exam environment.

Build a foundation of knowledge which will be useful also after passing the exam.

[visual exams Testing Engine](#)

Latest Version

We are constantly reviewing our products. New material is added and old material is revised. Free updates are available for 90 days after the purchase. You should check your member zone at VisualExams and update 3-4 days before the scheduled exam date.

Here is the procedure to get the latest version:

1. Go to <http://www.visual exams.com/>
2. Log in the **User Center**
3. The latest versions of all purchased products are downloadable from here. Just click the links.

Feedback

If you spot a possible improvement then please let us know. We always interested in improving product quality.

Feedback should be send to Visual exams@hotmail.com. You should include the following: Exam number, version, page number, question number, and your login Account.

Our experts will answer your mail promptly.

Explanations

This product does not include explanations at the moment. If you are interested in providing explanations for this exam, please contact Visual exams@hotmail.com.

Features

- Comprehensive questions with complete details
- Instant Downloadable in PDF form.
- Verified Answers Researched by Industry Experts
- Questions accompanied by exhibits.
- Drag and Drop questions as experienced in the Actual Exams.
- These questions and answers are backed by our GUARANTEE.
- Questions updated on regular basis.
- Like actual certification exams our product is in multiple-choice questions (MCQs)

Commitment to Your Success: At VisualTestExam.com, we are committed to you ongoing success. Our exams and questions are constantly being updated and compared to industry standards.

Want to earn a Microsoft certification like MCSE, MCSE 2003, CCNA, CCNP? Thinking about getting an A+ or CCSP?

A, CCSP or Network+ Certification with less effort and time. You will be astonished at the theoretical and practical knowledge you will acquire in such a short period of time using our Certification Training Products. Our Study material will enable you to pass your Microsoft, Your Cisco and any other certification on the very first attempt.

Guarantee

Visualexams provides the most competitive quality of all exams for the customers, we guarantee your success at the first attempt with only our Certification Question&Answers, if somehow you do not pass the exam at the first time, we will not only arrange FULL REFUND for you, but also provide you another exam of your claim, ABSOLUTELY FREE!

1. What is the correct TCP three-way handshake connection setup?

- A. SYN - FIN - ACK
- B. SYN - DATA - FIN
- C. SYN - DATA - ACK
- D. SYN - SYN/ACK - ACK
- E. SYN - SYN/ACK - FIN/ACK

Answer: D

2. Which two statements are true about Content Routers in Application and Content Networking System?

(Choose two.)

- A. Content Routers store on-demand and pre-positioned content.
- B. Content Routers route content to the edges of a content network.
- C. Content Routers contain the IGP routing tables for the routed domain.
- D. Content Routers act as authoritative DNS servers for the routed domain.
- E. Content Routers choose the most suitable Content Engines to handle a particular clients request.

Answer: DE

3. You are using the active/standby method to implement a high availability Content Switching design. What are three benefits? (Choose three.)

- A. less expensive
- B. easier to troubleshoot
- C. predictable traffic path
- D. increases the overall performance
- E. predictable failover behavior

Answer: BCE

4. An NTLM-authenticated user is promoted for login name and password when attempting to access the public Internet. What happens to the user's request if he cannot provide valid user credentials?

- A. Access to the Internet will be allowed and the user's Internet activities will be logged by IP address.
- B. The user will be denied all access to the Internet.

C. User access to the Internet will have less priority, resulting in slower Internet access than authenticated users.

D. The user's manager will receive an automatic notification that the user failed to provide valid credentials.

Answer: B

5. The transaction-logs enable command enables transaction logging. Which file will contain the WMT server logs?

A. local1/logs working.log

B. local1/logs/wmt.log

C. local1/logs/export/working.log

D. local1/service_logs/wmt_start_log_latest

Answer: C

6. What are three benefits of terminating SSL traffic in a Content Switch? (Choose three.)

A. eliminates the need for SSL

B. maintains security by allowing data to be decrypted, processed, and re-encrypted within a single device

C. enables the Content Switch to make load balancing decisions on HTTP-layer information

D. reduces the number of digital certificates required in most web hosting environments

E. reduces or eliminates server burden of negotiating SSL handshakes

Answer: BCE

7. Why is the three-way handshake mechanism required for TCP session establishment?

A. It keeps both sides of a connection from timing out.

B. It ensures that both ends of a connection are synchronously established.

C. There is less chance of interference and the session getting dropped.

D. It ensures the connection is established between the correct stations.

Answer: B

8. What is the primary function of DNS?

A. to replace DHCP

B. to host file manager

- C. to serve as a source location on the Internet
- D. to resolve a client IP address to a MAC address
- E. to serve as a host name to IP address resolution

Answer: E

9. You should configure content playback and replication bandwidth through the _____ GUI.

- A. Content Engine
- B. Content Router
- C. Content Services Switch
- D. Content Distribution Manager

Answer: D

10. You are using Content Switching for Server Load Balancing. What is the purpose of sticky connections?

- A. They ensure that a TCP session remains active.
- B. They ensure an even load balanced server farm.
- C. They provide the ability to have connections from a client directed to the same server.
- D. They provide a means to collect statistics for an electronic commerce application within a content network.
- E. They provide the ability to have connections from a client directed to multiple servers without losing session information.

Answer: C

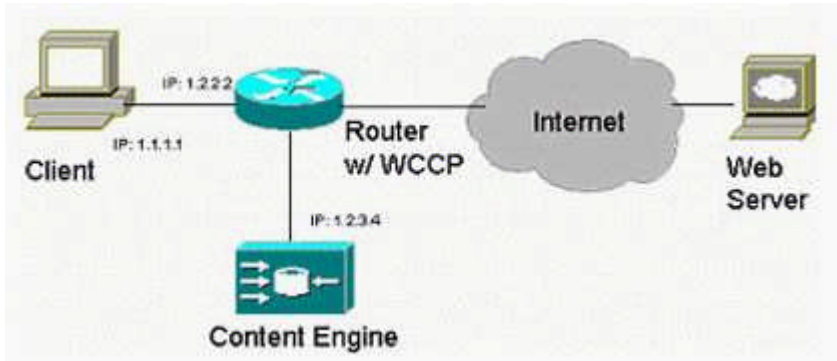
11. Which statement is true about using FTP to acquire files and directories?

- A. You can use FTP to acquire files and directories to the designated channel directory within your root Content Engine.
- B. You cannot use FTP to copy or move files and directories to the designated channel directory within your Content Distribution Manager Import directory.
- C. You can use FTP to copy or move files but not directories to the designated channel directory within your Content Distribution Manager Import directory.
- D. You can use FTP to copy or move directories but not files to the designated channel directory within your

Content Distribution Manager Import directory.

Answer: A

12. Refer to the exhibit. The exhibit shows a Content Engine with WCCP enabled between the Content Engine and the router. The Client browser is configured with an HTTP proxy address of 1.2.3.4. What does this illustrate?



- A. proxy caching
- B. transparent caching
- C. reverse proxy caching
- D. transparent redirection

Answer: A

13. With two GSSs (Primary-GSSM and Standby-GSSM), you make a change to a domain list on the Primary-GSSM. How do you synchronize the configuration change you just made on the Primary-GSSM to the Standby-GSSM)?

- A. Issue the command `gss start`.
- B. Do nothing. The configuration is synchronized automatically when a change is made to the dns database.
- C. Issue the command `gssm primary-to-standby`.
- D. Issue the command `gss enable`.

Answer: B

14. Which HTTP return code indicates a successful client response?

- A. 1xx

B. 2xx

C. 3xx

D. 4xx

E. 5xx

Answer: B

15. Customer ABC wants to deploy Cisco Content Engines to perform URL filtering and VOD streaming. The customer has many *.mov VOD training files that are frequently requested in the branch offices and played through the Apple QuickTime player. The files need to be pre-positioned to branch office Content Engines and served by Content Engines to client desktops. Currently standalone Smartfilter servers are being used to do content filtering, but the customer would like to take advantage of the SmartFilter on-box feature in the Cisco Content Engine. Which license should customer ABC require?

A. Microsoft Windows Media License

B. Real Helix Universal Gateway License

C. Multicast Replication License

D. Websense Content Filtering License

E. Smartfilter Content Filtering License

Answer: E

Visualexams.com was founded in 2006. The safer,easier way to help you pass any IT Certification exams . We provide high quality IT Certification exams practice questions and answers(Q&A). Especially Adobe, Apple, Citrix, Comptia, EMC, HP, HuaWei, LPI, Nortel, Oracle, SUN, Vmware and so on. And help you pass any IT Certification exams at the first try.

Web site: <http://www.visualexams.com>

You can reach us at any of the email addresses listed below.

E-Mail: [visualexams \(at\) hotmail.Com](mailto:visualexams@hotmail.com)