

Exam : Cisco 642-311

**Title : Cisco Optical SONET Exam
(SONET)**

Version : Demo

Important Note, Please Read Carefully

Other VisualExams products

[All visualexams IT Exam Products](#)

Our products of Offline Testing Engine

Use the offline Testing engine product to practice the questions in an exam environment.

Build a foundation of knowledge which will be useful also after passing the exam.

[visualexams Testing Engine](#)

Latest Version

We are constantly reviewing our products. New material is added and old material is revised. Free updates are available for 90 days after the purchase. You should check your member zone at VisualExams and update 3-4 days before the scheduled exam date.

Here is the procedure to get the latest version:

1. Go to <http://www.visualexams.com/>
2. Log in the **User Center**
3. The latest versions of all purchased products are downloadable from here. Just click the links.

Feedback

If you spot a possible improvement then please let us know. We always interested in improving product quality.

Feedback should be send to VisualExams@hotmail.com. You should include the following: Exam number, version, page number, question number, and your login Account.

Our experts will answer your mail promptly.

Explanations

This product does not include explanations at the moment. If you are interested in providing explanations for this exam, please contact VisualExams@hotmail.com.

Features

- Comprehensive questions with complete details
- Instant Downloadable in PDF form.
- Verified Answers Researched by Industry Experts
- Questions accompanied by exhibits.
- Drag and Drop questions as experienced in the Actual Exams.
- These questions and answers are backed by our GUARANTEE.
- Questions updated on regular basis.
- Like actual certification exams our product is in multiple-choice questions (MCQs)

Commitment to Your Success: At VisualTestExam.com, we are committed to you ongoing success. Our exams and questions are constantly being updated and compared to industry standards.

Want to earn a Microsoft certification like MCSE, MCSE 2003, CCNA, CCNP? Thinking about getting an A+ or CCSP?

A, CCSP or Network+ Certification with less effort and time. You will be astonished at the theoretical and practical knowledge you will acquire in such a short period of time using our Certification Training Products. Our Study material will enable you to pass your Microsoft, Your Cisco and any other certification on the very first attempt.

Guarantee

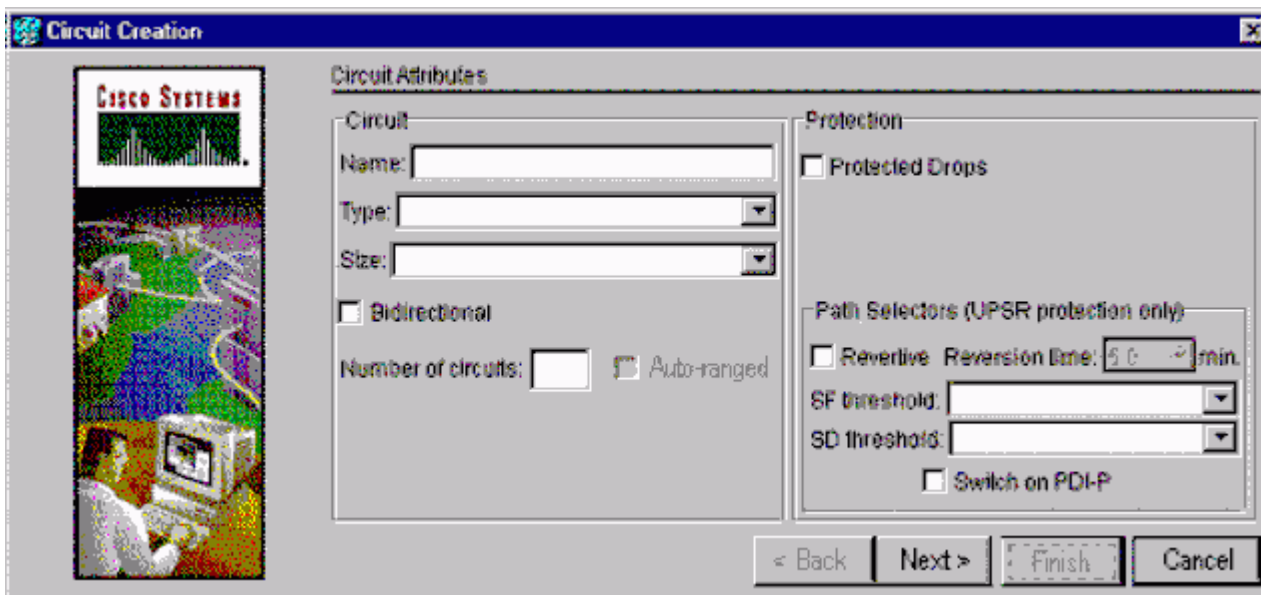
Visualexams provides the most competitive quality of all exams for the customers, we guarantee your success at the first attempt with only our Certification Question&Answers, if somehow you do not pass the exam at the first time, we will not only arrange FULL REFUND for you, but also provide you another exam of your claim, ABSOLUTELY FREE!

1. You are installing a Cisco ONS 15454 in a service provider site. A DS3 cable is to be connected to a digital cross-connect system. What is the maximum distance allowed between the two?

- A. 225 ft
- B. 450 ft
- C. 655 ft
- D. 900 ft

Answer: B

2. Click the Exhibit button. Within an ONS 15454, you are provisioning a circuit on an unprotected UPSR ring. In the exhibit, which two must you configure? (Choose two.)



- A. revertive
- B. circuit type
- C. circuit size
- D. bidirectional
- E. protected drops
- F. switch on PDI-P

Answer: BC

3. With R4.0, how many total DCC tunnel connections can each ONS 15454 support using the TCC+ card?

- A. 10

B. 32

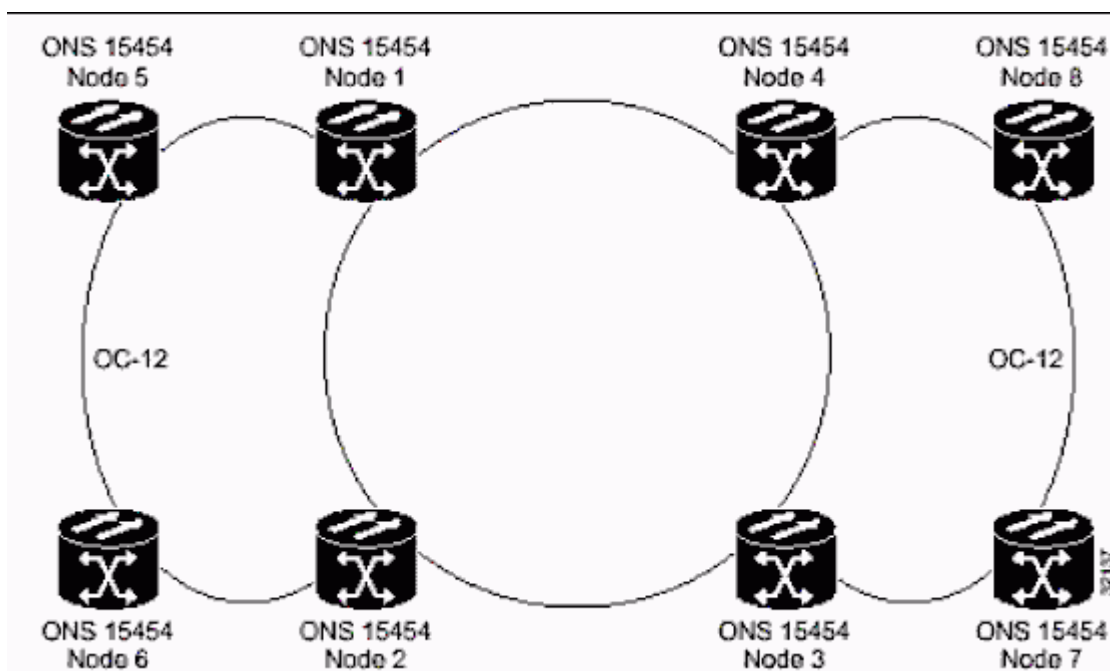
C. 64

D. 84

E. 96

Answer: B

4. Click the Exhibit button. A customer has several interconnected core rings (see exhibit). They want to create several irtual rings?utilizing their OC-192 backbone (nodes 1,2,3,4). What should you recommend?



A. PPMN with BLSR rings

B. PPMN with UPSR rings

C. 1:N protection on all core circuits

D. multi-ring interconnect with BLSR rings

Answer: B

5. Which three timing modes are supported on the ONS 15454 shelf? (Choose three.)

A. line timing

B. loop timing

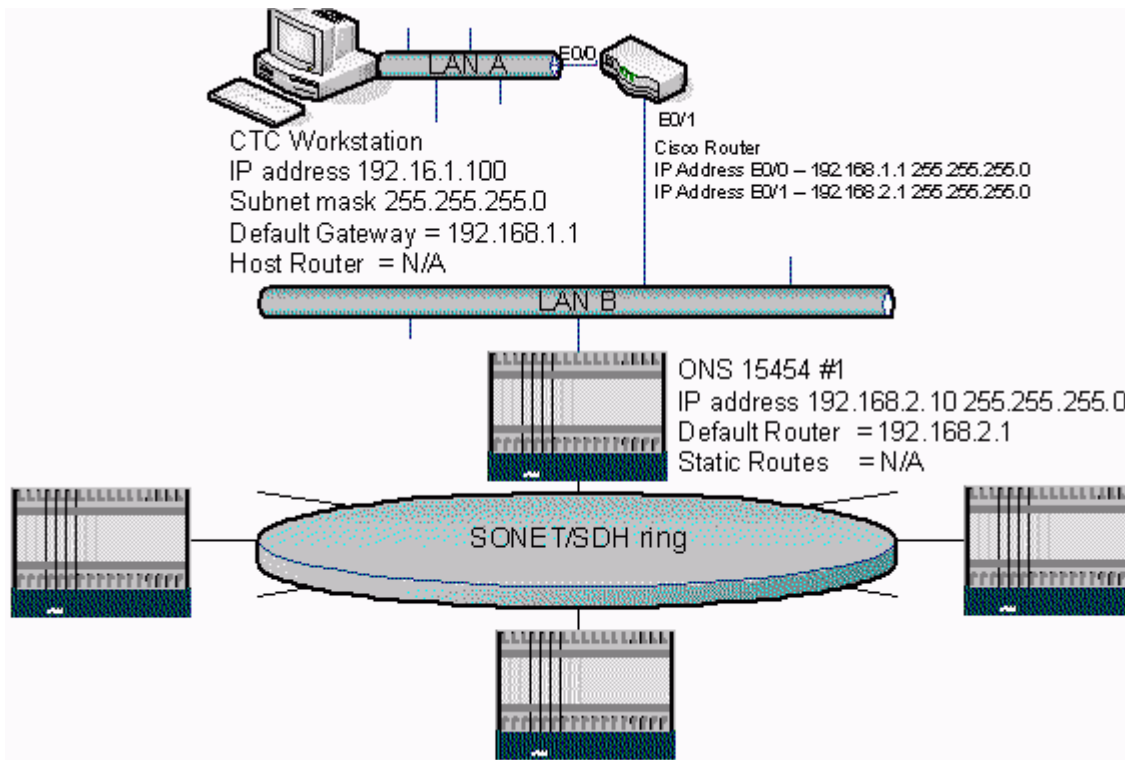
C. internal timing

D. through timing

E. external timing

Answer: ACE

6. Click the Exhibit button. In the DCN connection shown in the exhibit, all non-GNE nodes are located on different subnets from the GNE. There are no static routes or external OSPF on any elements. CTC Workstation and GNE have Cisco Router as their default gateway. Can the CTC workstation see the entire SONET network?



- A. Yes, but only if OSPF is enabled around the ring.
- B. Yes, because the GNE will only serve as a proxy-ARP for elements on the same subnet.
- C. Yes, but only if the router's address is entered as a static route in the non-GNE elements.
- D. Yes, because the GNE will serve as a proxy-ARP for all elements, regardless of their subnets.

Answer: A

7. What protocol enables Ethernet over SONET/SDH encapsulation interoperability between the G-series and ML-series Ethernet cards?

- A. LEX
- B. HDLC
- C. GFP-F

D. PPP/BCP

Answer: A

8. What are two characteristics of dual-ring interconnect in SONET networks? (Choose two.)

- A. It protects signals against node failures between rings.
- B. It protects signals against node failure within a single ring.
- C. It allows for traffic to be preempted when a ring switch occurs.
- D. Traffic can be dropped and continued at interconnecting nodes.
- E. It protects preemptible traffic from being dropped when a ring switch occurs.

Answer: AD

9. Why is an OC-3 2F-BLSR not feasible?

- A. Switch times would exceed 50 ms for an OC-3 BLSR ring.
- B. An equal amount of working and protect bandwidth is required.
- C. DCC bandwidth is not large enough to handle K1/K2 processing.
- D. There is not enough bandwidth in an OC-3 ring to justify BLSR protection.

Answer: B

10. What is the correct relative switching priority in a BLSR ring (higher to lower)?

- A. signal fail, signal degrade, manual switch
- B. signal degrade, signal fail, manual switch
- C. protection lockout, manual switch, path AIS
- D. forced switch, manual switch, signal degrade
- E. protection lockout, manual switch, forced switch

Answer: A

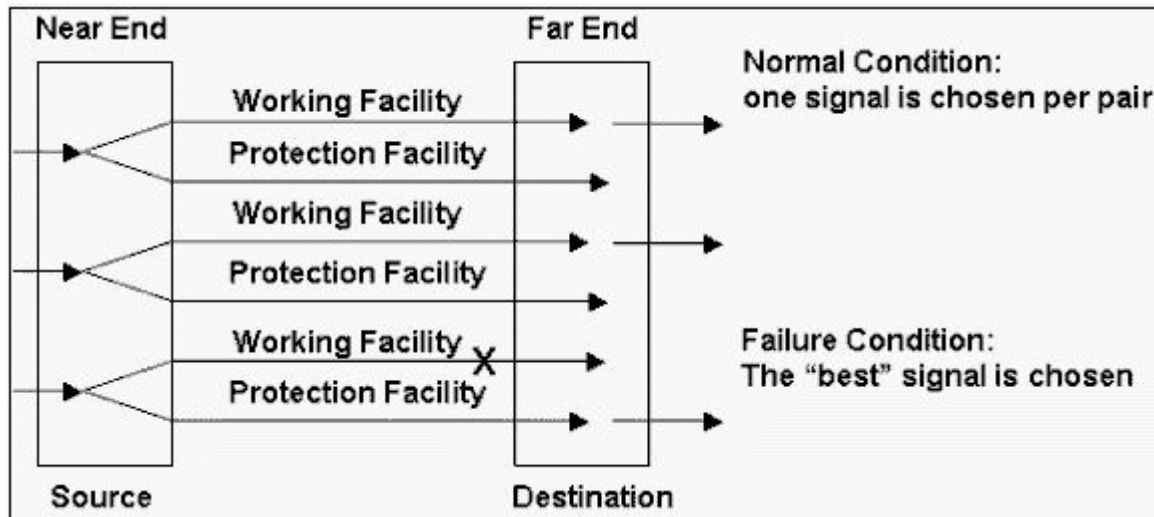
11. You are provisioning a DS-1 circuit on an ONS 15454 UPSR configuration and XC-10G card. How many total VT ports are used within the VT matrix at the source node?

- A. 0
- B. 1

- C. 2
- D. 3
- E. 4

Answer: D

12. Click the Exhibit button. Which type of protection is shown in the exhibit?



- A. 1+0
- B. 1+1
- C. 1:1
- D. 1:N

Answer: B

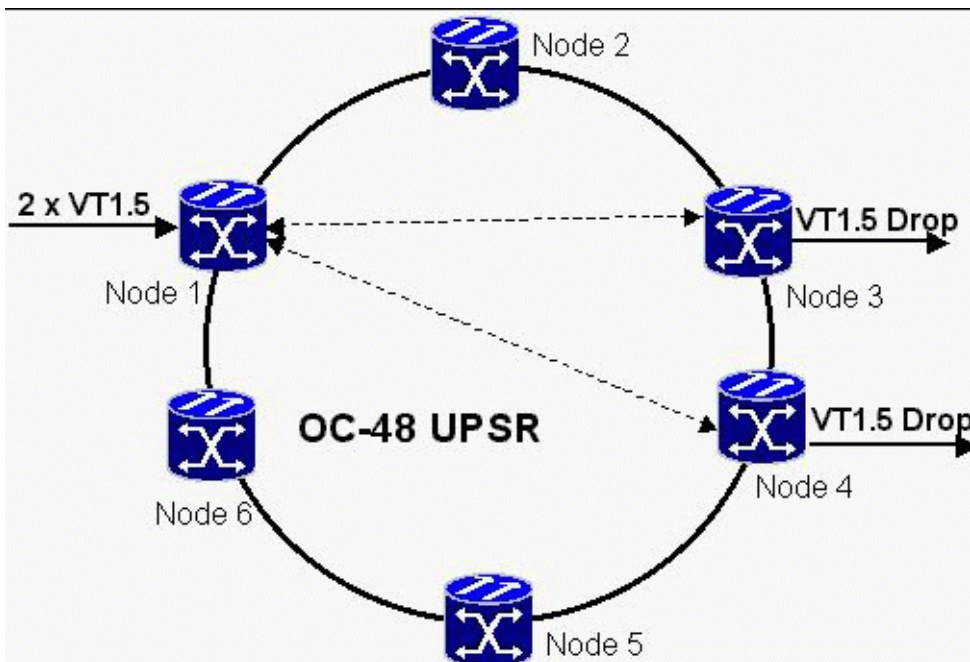
13. A customer wants to create a 1:1 protection group with a DS3N-12 card. Which card slots would allow for a 1:1 protection?

- A. Slot 2 and Slot 4
- B. Slot 4 and Slot 6
- C. Slots 5 or 13 only
- D. Slot 16 and Slot 17

Answer: D

14. Click the Exhibit button. Given the information shown in the exhibit, when creating 2 DS1 circuits, how many STS ports are used on the VT1.5 matrix at Node 1 as VT circuits and how many are used after using

VT tunnels?



- A. 2; 0
- B. 3; 2
- C. 3, 5
- D. 4; 0
- E. 6; 0
- F. 6; 2

Answer: C

15. A customer has 2 DS1s to add between adjacent nodes in a UPSR ring. What type of circuit should you recommend?

- A. VT circuits
- B. STS circuits
- C. VT tunnel circuits
- D. 1:1 protection circuits
- E. 1:N protection circuits

Answer: A

Visualexams.com was founded in 2006. The safer,easier way to help you pass any IT Certification exams . We provide high quality IT Certification exams practice questions and answers(Q&A). Especially Adobe, Apple, Citrix, Comptia, EMC, HP, HuaWei, LPI, Nortel, Oracle, SUN, Vmware and so on. And help you pass any IT Certification exams at the first try.

Web site: <http://www.visualexams.com>

You can reach us at any of the email addresses listed below.

E-Mail: [visualexams \(at\) hotmail.Com](mailto:visualexams@hotmail.com)