

Exam : Cisco 642-061

**Title : Routing and Switching
Solutions for System
Engineers**

Version : Demo

Important Note, Please Read Carefully

Other VisualExams products

[All visualexams IT Exam Products](#)

Our products of Offline Testing Engine

Use the offline Testing engine product to practice the questions in an exam environment.

Build a foundation of knowledge which will be useful also after passing the exam.

[visualexams Testing Engine](#)

Latest Version

We are constantly reviewing our products. New material is added and old material is revised. Free updates are available for 90 days after the purchase. You should check your member zone at VisualExams and update 3-4 days before the scheduled exam date.

Here is the procedure to get the latest version:

1. Go to <http://www.visualexams.com/>
2. Log in the **User Center**
3. The latest versions of all purchased products are downloadable from here. Just click the links.

Feedback

If you spot a possible improvement then please let us know. We always interested in improving product quality.

Feedback should be send to Visualexams@hotmail.com. You should include the following: Exam number, version, page number, question number, and your login Account.

Our experts will answer your mail promptly.

Explanations

This product does not include explanations at the moment. If you are interested in providing explanations for this exam, please contact Visualexams@hotmail.com.

Features

- Comprehensive questions with complete details
- Instant Downloadable in PDF form.
- Verified Answers Researched by Industry Experts
- Questions accompanied by exhibits.
- Drag and Drop questions as experienced in the Actual Exams.
- These questions and answers are backed by our GUARANTEE.
- Questions updated on regular basis.
- Like actual certification exams our product is in multiple-choice questions (MCQs)

Commitment to Your Success: At VisualTestExam.com, we are committed to you ongoing success. Our exams and questions are constantly being updated and compared to industry standards.

Want to earn a Microsoft certification like MCSE, MCSE 2003, CCNA, CCNP? Thinking about getting an A+ or CCSP?

A, CCSP or Network+ Certification with less effort and time. You will be astonished at the theoretical and practical knowledge you will acquire in such a short period of time using our Certification Training Products. Our Study material will enable you to pass your Microsoft, Your Cisco and any other certification on the very first attempt.

Guarantee

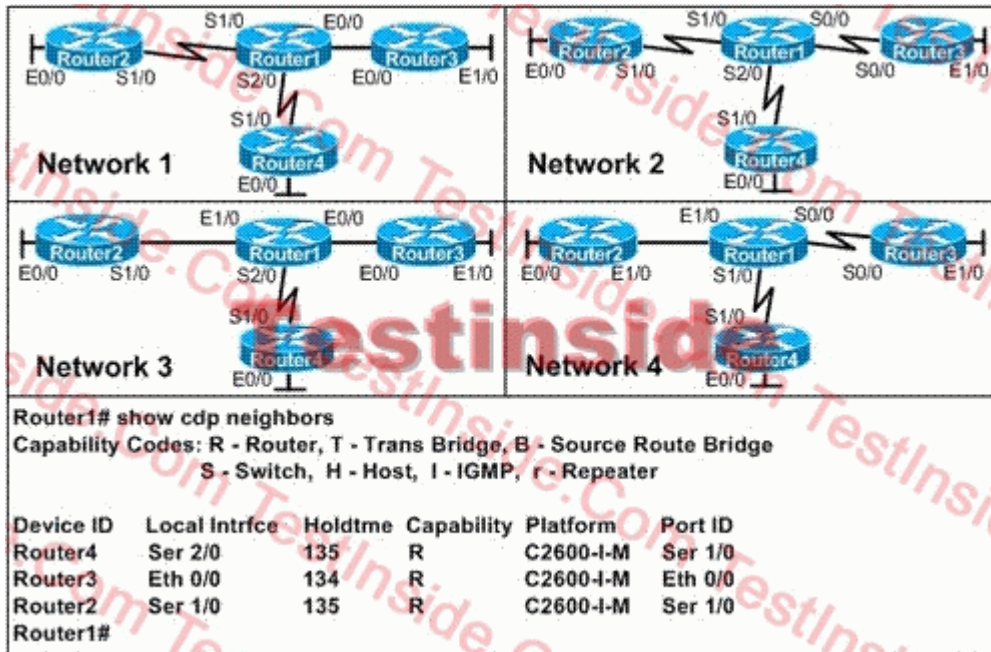
VisualExams provides the most competitive quality of all exams for the customers, we guarantee your success at the first attempt with only our Certification Question&Answers, if somehow you do not pass the exam at the first time, we will not only arrange FULL REFUND for you, but also provide you another exam of your claim, ABSOLUTELY FREE!

1. Which two types of mechanisms can be used to provide load balancing across parallel links in a redundant campus network? (Choose two.)

- A. QoS
- B. HSRP
- C. VRRP
- D. 802.1Q
- E. EtherChannel link aggregation
- F. Cisco Express Forwarding load balancing

Answer: EF

2. Refer to the exhibit.



Which network is characterized by the output from the show cdp neighbors command?

- A. Network 1
- B. Network 2
- C. Network 3
- D. Network 4

Answer: A

3. You have been given a contract to redesign a customer's network in order to provide support for emerging technologies like VoIP and video services. In order to more effectively identify this customer's

needs, you would like to analyze the traffic in its existing network. Which two tools in Cisco IOS can you use to perform this analysis? (Choose two.)

- A. RMON probes
- B. NBAR
- C. access control lists
- D. NetFlow
- E. embedded device manager

Answer: BD

4. You have been given a contract to consolidate the Cisco Catalysts 6500 services available at the headquarters office of Acme Enterprises. The Acme Enterprises management team wants to deploy application infrastructure control, security, and simplicity in design. Which Cisco Catalyst service module should you recommend?

- A. IDS module
- B. Content Services Module with SSL
- C. Network Analysis Module
- D. Anomaly Guard Module
- E. ACE module

Answer: E

5. Which supervisor module can be used in the Cisco Catalyst 4510R chassis?

- A. Supervisor II-Plus
- B. Supervisor IV
- C. Supervisor V-10GE
- D. Supervisor II-TS

Answer: C

6. The servers belonging to your customer were recently infected with the Blaster virus. Which Cisco product will help prevent this kind of virus propagation?

- A. CSA

- B. PIX
- C. CUE
- D. CME

Answer: A

7. What are the two main benefits of using VSANs as opposed to zoning? (Choose two.)

- A. increased capacity
- B. increased availability
- C. increased performance
- D. increased geographical reach
- E. increased manageability and scalability

Answer: BE

8. What queue-scheduling algorithm does the Optical Services Module PXF use to provide QoS features?

- A. FIFO
- B. Modified Deficit
- C. Weighted Round Robin
- D. Versatile Traffic Management Services

Answer: D

9. Which three of these are features of the Cisco Catalyst 4900 Series Switches? (Choose three.)

- A. one RU
- B. stackable
- C. fixed configuration
- D. Power over Ethernet
- E. redundant power supplies
- F. Layer 2 through Layer 7 switching capabilities

Answer: ACE

10. Which Cisco Catalyst 6500 Series Switch supervisor module should you select in order to allow service

providers to deploy MPLS and achieve high throughput?

- A. Supervisor 32
- B. Supervisor 720
- C. Supervisor 1A
- D. Supervisor 2

Answer: B

11. Your client is adding a new R&D facility to its existing, three-building corporate campus. The new building will be four stories high and house from 150 to 400 employees. The client would like to deploy IP communications to this building and connect it to the existing campus TDM phone system. The new building will use collaborative workspaces for each team, and it will require that each team member have the flexibility to move among work areas yet remain connected to the network and receive phone calls.

Which four technologies will be applicable here? (Choose four.)

- A. wireless
- B. switching
- C. security
- D. storage
- E. PoE
- F. AONS

Answer: ABCE

12. In the Cisco Catalyst 6500-E Series chassis, what are three key chassis specifications? (Choose three.)

- A. requires Cisco IOS 12.2(1)SXD and beyond
- B. three-slot chassis supports CEF720 line cards
- C. is backward-compatible with all existing software versions
- D. six- and nine-slot chassis support only 6000-W power supplies
- E. supports all existing supervisors, line cards, switch fabrics, and software releases

Answer: BCE

13. Your network includes a Cisco Catalyst 6500 Switch with an FWSM module. You need Layer 2

connectivity between two routers located on different firewall interfaces. Which feature will you need in order to provide this connectivity?

- A. router mode
- B. virtual firewall
- C. stateful firewall
- D. transparent mode
- E. two FWSM modules in failover mode

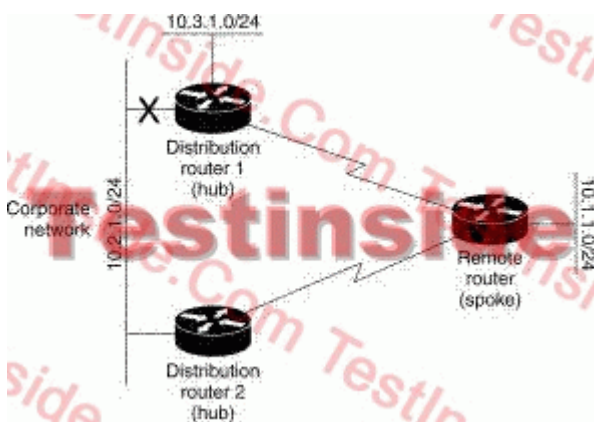
Answer: D

14. Which layer in a hierarchical network is considered optional in smaller campus networks?

- A. access
- B. distribution
- C. core
- D. remote
- E. DMZ
- F. aggregation

Answer: C

15. Refer to the exhibit. The network is running the EIGRP routing protocol. Distribution router 1 loses the link to the corporate network. How should the remote spoke router be configured to prevent it from being the next-lowest-cost path to network 10.3.1.0?



- A. Disable split horizon.
- B. Configure it as an EIGRP stub router.
- C. Enable route filtering.

D. Configure a floating static route to network 10.3.1.0.

Answer: B

16. In a Cisco Catalyst 6509 Switch, in which slots can the Sup2 card be installed?

- A. any slot
- B. slots 1 and 2
- C. slots 3 and 4
- D. slots 5 and 6
- E. slots 1 through 9

Answer: D

17. Refer to the exhibit. Given the network topology, what function is OSPF Router E performing?



- A. internal router
- B. area border router
- C. stub router
- D. autonomous system border router

Answer: D

18. Which three of the following characteristics are network fundamentals that provide WAN and LAN connectivity in the Integrated Services layer of the branch office design model? (Choose three.)

- A. scalability
- B. performance

- C. management
- D. high availability
- E. quality of service
- F. IP addressing and routing

Answer: DEF

19. Which is a reliable network auditing methodology for discovering applications on the network and their usage characteristics?

- A. Interview system administrators regarding the networked applications.
- B. Conduct a network usage study over a given period of time.
- C. Place a sniffer device on the network to grasp a snapshot of traffic on the network.
- D. Conduct a network inventory of servers and applications installed on them.

Answer: B

20. You have a customer that is looking to mitigate DDOS attacks. Which two of the following Cisco security products would you recommend to meet this need? (Choose two.)

- A. Cisco IPS
- B. Cisco ASA
- C. Cisco IOS Firewall
- D. Cisco Anomaly Guard Module
- E. Cisco Firewall Services Module
- F. Cisco Traffic Anomaly Detector Module

Answer: BD

Visualexams.com was founded in 2006. The safer,easier way to help you pass any IT Certification exams . We provide high quality IT Certification exams practice questions and answers(Q&A). Especially Adobe, Apple, Citrix, Comptia, EMC, HP, HuaWei, LPI, Nortel, Oracle, SUN, Vmware and so on. And help you pass any IT Certification exams at the first try.

Web site: <http://www.visualexams.com>

You can reach us at any of the email addresses listed below.

E-Mail: [visualexams \(at\) hotmail.Com](mailto:visualexams@hotmail.com)