

**Exam : Alcatel-Lucent 4A0-100**

**Title : Alcatel-Lucent Scalable IP  
Networks**

**Version : Demo**

## Important Note, Please Read Carefully

### Other VisualExams products

[All visual exams IT Exam Products](#)

### Our products of Offline Testing Engine

Use the offline Testing engine product to practice the questions in an exam environment.

Build a foundation of knowledge which will be useful also after passing the exam.

[visual exams Testing Engine](#)

### Latest Version

We are constantly reviewing our products. New material is added and old material is revised. Free updates are available for 90 days after the purchase. You should check your member zone at VisualExams and update 3-4 days before the scheduled exam date.

Here is the procedure to get the latest version:

1. Go to <http://www.visual exams.com/>
2. Log in the **User Center**
3. The latest versions of all purchased products are downloadable from here. Just click the links.

### Feedback

If you spot a possible improvement then please let us know. We always interested in improving product quality.

Feedback should be send to [Visual exams@hotmail.com](mailto:Visual exams@hotmail.com). You should include the following: Exam number, version, page number, question number, and your login Account.

Our experts will answer your mail promptly.

### Explanations

This product does not include explanations at the moment. If you are interested in providing explanations for this exam, please contact [Visual exams@hotmail.com](mailto:Visual exams@hotmail.com).

### Features

- Comprehensive questions with complete details
- Instant Downloadable in PDF form.
- Verified Answers Researched by Industry Experts
- Questions accompanied by exhibits.
- Drag and Drop questions as experienced in the Actual Exams.
- These questions and answers are backed by our GUARANTEE.
- Questions updated on regular basis.
- Like actual certification exams our product is in multiple-choice questions (MCQs)

**Commitment to Your Success: At VisualTestExam.com, we are committed to you ongoing success. Our exams and questions are constantly being updated and compared to industry standards.**

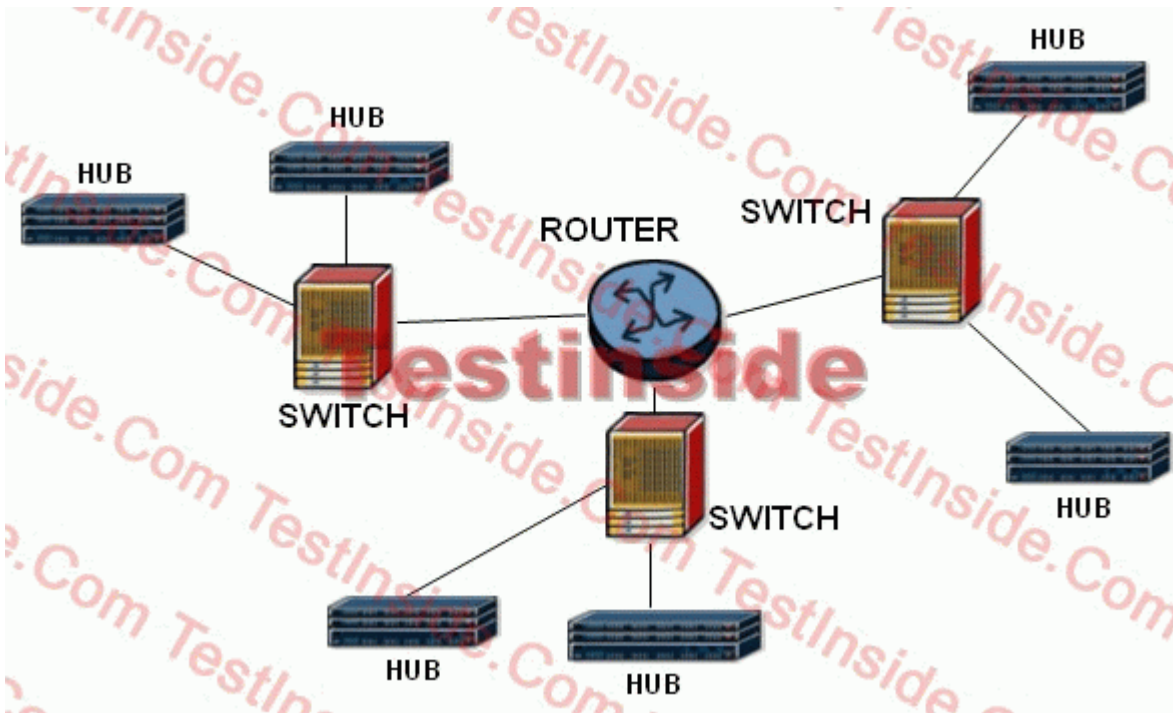
Want to earn a Microsoft certification like MCSE, MCSE 2003, CCNA, CCNP? Thinking about getting an A+ or CCSP?

A, CCSP or Network+ Certification with less effort and time. You will be astonished at the theoretical and practical knowledge you will acquire in such a short period of time using our Certification Training Products. Our Study material will enable you to pass your Microsoft, Your Cisco and any other certification on the very first attempt.

## **Guarantee**

VisualExams provides the most competitive quality of all exams for the customers, we guarantee your success at the first attempt with only our Certification Question&Answers, if somehow you do not pass the exam at the first time, we will not only arrange FULL REFUND for you, but also provide you another exam of your claim, ABSOLUTELY FREE!

1. Click the Exhibit Button below



An Ethernet Local Area Network (LAN) consists of the components shown in the diagram below:

How many broadcast and collision domains are on this LAN?

- A. 9 broadcast domains, 3 collision domains
- B. 3 broadcast domains, 3 collision domains
- C. 3 broadcast domains, 9 collision domains
- D. 1 broadcast domains, 9 collision domains

**Answer: C**

2. Which two 7750SR Service Router physical access methods are used to perform Out of Band (OOB) management? (Choose two.)

- A. console port
- B. management Ethernet port
- C. access ports
- D. network ports

**Answer: AB**

3. Given a network address of 116.14.0.0, which of the following is a valid host address when using the subnet mask 255.255.255.240?

- A.116.14.17.16
- B.116.14.17.31
- C.116.14.17.192
- D.116.14.17.189

**Answer: D**

4. A distance vector routing protocol uses which metric to choose the preferred route to a destination?

- A.bandwidth
- B.precedence
- C.hop count
- D.cost

**Answer: C**

5. In what OSPF area type will one see Type 7 LSAs.

- A.Not So Stubby Area (NSSA)
- B.Stub Area
- C.Backbone Area
- D.Normal Area

**Answer: A**

6. What is the network layer responsible for?

- A.Providing the physical address to the packet.
- B.Determining the path to the remote host.
- C.Providing reliable communications from host to host.
- D.Formatting the PDU.

**Answer: B**

7. Which of the following are basic router functions ? Choose two.

- A.Perform a Layer 2 header lookup
- B.Broadcast a Layer 2 packet to all the interfaces.

C.IP header examination.

D.Determine the best path to the destination.

**Answer:** CD

8. What is store/forward method of switching frames?

A.The switch merely looks at the source mac address before switching

B.The switch looks at the source and destination mac address before switching.

C.The switch looks at the IP header information before switching

D.The switch receives the whole frame before switching.

**Answer:** D

9. Which of the following are data rates defined for Ethernet operation over copper and fiber optic cabling?

(Choose three.)

A.1 Mbps

B.10 Mbps

C.1000 Mbps

D.10,000 Mbps

**Answer:** BCD

10. The Media Access Control (MAC) sub-layer is responsible for which two functions? (Choose two.)

A.directly interface with the transport layer

B.link integrity testing

C.physical addressing

D.data transmission synchronization

**Answer:** CD

11. Which Ethernet frame field does the receiver use to verify the integrity of the received bits?

A.Destination address

B.Frame check sequence

C.Preamble sequence

D.Length field

**Answer: B**

12. Which Ethernet frame fields are not considered when calculating the frame size? (Choose two.)

A.Frame check sequence

B.Preamble

C.Virtual Local Area Network (VLAN) tag

D.Start of frame delimiter

**Answer: BD**

13. Which of the following must be true for an Ethernet network to operate in full duplex mode? (Choose two.)

A.dedicated point-to-point connectivity

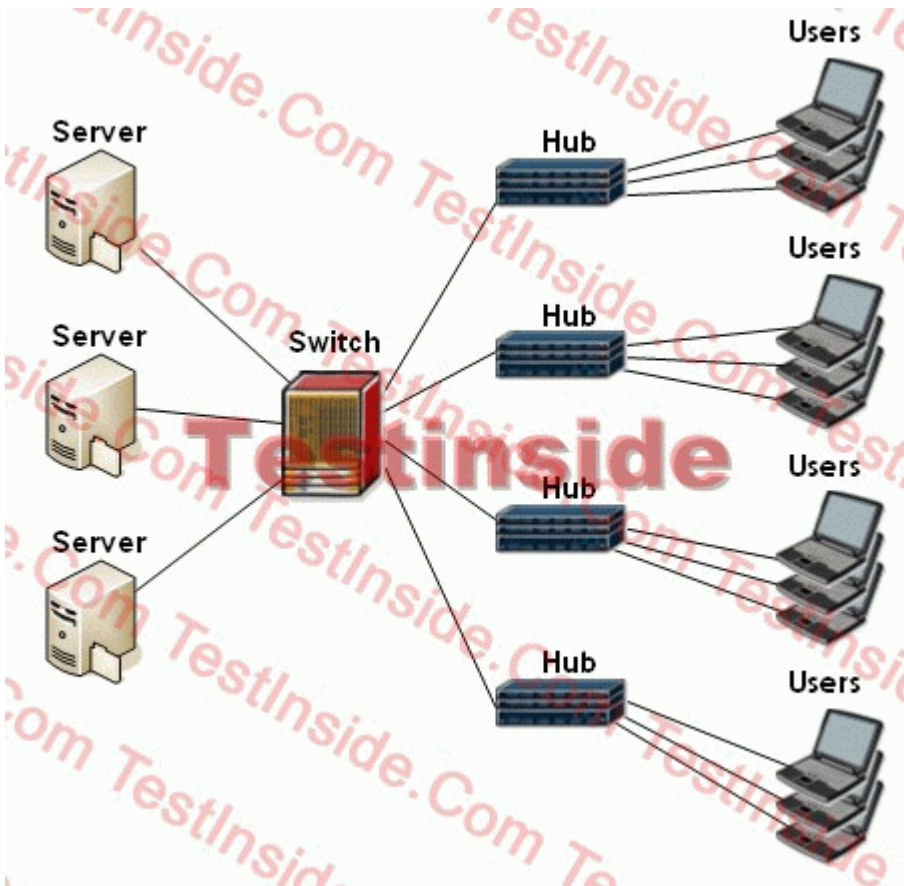
B.collision detection circuit enabled

C.shared network connectivity

D.collision detection circuit disabled

**Answer: AD**

14. Click the Exhibit Button below



A customers Ethernet network consists of the following:

The diagram shows:

Four 24-port hubs for user connectivity

Three contact management database servers

A 60-port Fast Ethernet switch

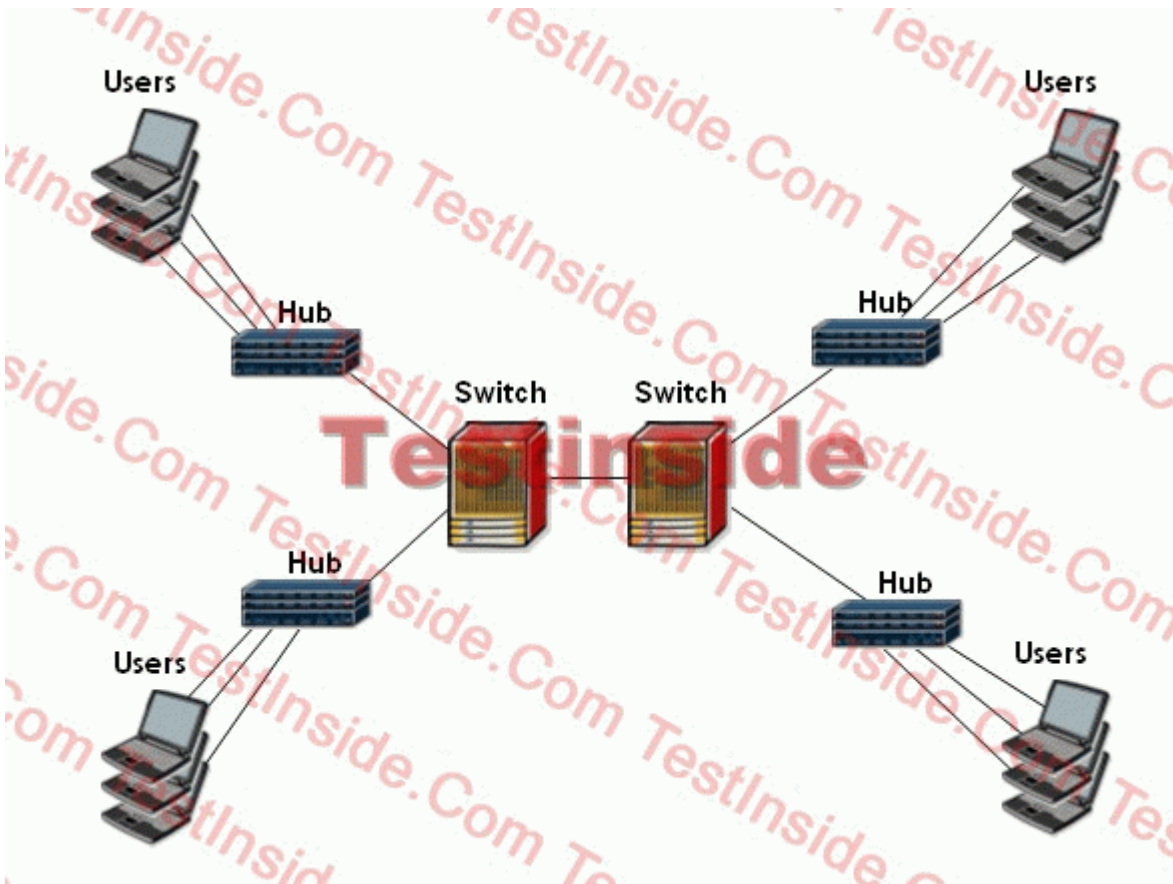
Dedicated Ethernet connections for each of the hubs and the database servers on the Fast Ethernet switch

Which two of the following statements concerning this networks operation are true? (Choose two.)

- A.the clients operate in full-duplex mode
- B.there will be no collisions between client devices
- C.collisions will occur between client devices
- D.the server connections operate in full-duplex mode

**Answer:** CD

15. Click the Exhibit Button below



An Ethernet Local Area Network (LAN) consists of the following components:

Four 24-port hubs

Two 16-port switches

How many broadcast domains are on this LAN?

- A.1
- B.2
- C.4
- D.16

**Answer: A**

16. An Ethernet switch receives a frame addressed to an unknown destination. Assuming the frame is error-free, what will the switch do with the frame?

- A.hold it in a buffer until it learns the port on which the destination is located
- B.flood the frame out all ports except the source port
- C.filter the frame and restrict it only to the source port
- D.age out the source address forwarding table entry

**Answer: B**

17. Which ATM adaptation layer is usually used for transporting IP datagrams?

- A.AAL1
- B.AAL2
- C. AAL 3
- D.AAL 5

**Answer: D**

18. Which of the following are phases of PPP operation? Choose two.

- A.Link establishment
- B.Authentication
- C. Window size negotiation
- D.Routing

**Answer: AB**

19. What is the purpose of carrier sense in the CSMA/CD algorithm?

- A.To ensure the host is able to detect an operational physical link before transmitting.
- B.The host is able to detect the transmission speed of the Ethernet switch port to which the host is connected
- C.The host will only transmit data when it detects that no other devices are transmitting
- D.The host will only transmit upon a timer expiry

**Answer: C**

Visualexams.com was founded in 2006. The safer,easier way to help you pass any IT Certification exams . We provide high quality IT Certification exams practice questions and answers(Q&A). Especially Adobe, Apple, Citrix, Comptia, EMC, HP, HuaWei, LPI, Nortel, Oracle, SUN, Vmware and so on. And help you pass any IT Certification exams at the first try.

Web site: <http://www.visualexams.com>

You can reach us at any of the email addresses listed below.

E-Mail: [visualexams \(at\) hotmail.Com](mailto:visualexams@hotmail.com)