

Exam : Cisco 350-027

Title : CCIE Written: Metro Ethernet

Version : Demo

Important Note, Please Read Carefully

Other VisualExams products

[All visual exams IT Exam Products](#)

Our products of Offline Testing Engine

Use the offline Testing engine product to practice the questions in an exam environment.

Build a foundation of knowledge which will be useful also after passing the exam.

[visual exams Testing Engine](#)

Latest Version

We are constantly reviewing our products. New material is added and old material is revised. Free updates are available for 90 days after the purchase. You should check your member zone at VisualExams and update 3-4 days before the scheduled exam date.

Here is the procedure to get the latest version:

1. Go to <http://www.visual exams.com/>
2. Log in the **User Center**
3. The latest versions of all purchased products are downloadable from here. Just click the links.

Feedback

If you spot a possible improvement then please let us know. We always interested in improving product quality.

Feedback should be send to Visual exams@hotmail.com. You should include the following: Exam number, version, page number, question number, and your login Account.

Our experts will answer your mail promptly.

Explanations

This product does not include explanations at the moment. If you are interested in providing explanations for this exam, please contact Visual exams@hotmail.com.

Features

- Comprehensive questions with complete details
- Instant Downloadable in PDF form.
- Verified Answers Researched by Industry Experts
- Questions accompanied by exhibits.
- Drag and Drop questions as experienced in the Actual Exams.
- These questions and answers are backed by our GUARANTEE.
- Questions updated on regular basis.
- Like actual certification exams our product is in multiple-choice questions (MCQs)

Commitment to Your Success: At VisualTestExam.com, we are committed to you ongoing success. Our exams and questions are constantly being updated and compared to industry standards.

Want to earn a Microsoft certification like MCSE, MCSE 2003, CCNA, CCNP? Thinking about getting an A+ or CCSP?

A, CCSP or Network+ Certification with less effort and time. You will be astonished at the theoretical and practical knowledge you will acquire in such a short period of time using our Certification Training Products. Our Study material will enable you to pass your Microsoft, Your Cisco and any other certification on the very first attempt.

Guarantee

Visualexams provides the most competitive quality of all exams for the customers, we guarantee your success at the first attempt with only our Certification Question&Answers, if somehow you do not pass the exam at the first time, we will not only arrange FULL REFUND for you, but also provide you another exam of your claim, ABSOLUTELY FREE!

1. What kind of packet is being decoded, using the captured debug mpls l2transport packet data command, below?

```
*Apr 26 16:39:09.092: ATOM imposition: out Et1/0, size 128, EXP 0x0, seq 0, control word 0x0
*Apr 26 16:39:09.092: XX XX XX XX XX XX YY YY YY YY YY YY 88 47 00 01
                        ^^^^^^^^^^^^^^^^^^^^^^^^^^^^^^^^^^^^^^^^^^^^^^^^^^^^^^^^^^^^^^^^^^^^^
                        SA MAC          DA MAC          etype top_shim-->
                        MPLS
                        Unic

*Apr 26 16:39:09.092: 00 FF 00 01 01 02 00 00 00 00 03 CC 45 00 00 64
                        ^^^^^^^^^^^^^^^^^^^^^^^^^^^^^^^^^^^^^^^^^^^^^^^^^^^^^^^^^^^^^^^^^^^^^
                        <--top_shim VC_Label  Ctrl-word  |  | Begins IP Packet
                        Label=17 Label=16      |  | IP NLPID
                        S=0      S=1          Control
                        TTL=255 TTL=2

*Apr 26 16:39:09.092: 04 7A 00 00 FF 01 93 77 0A 0A 07 CC 0A 0A 07 C8
*Apr 26 16:39:09.092: 08 00 80 46 00 09 00 04 00 00 00 00 14 4E E9 A8
*Apr 26 16:39:09.092: AB CD AB CD AB CD AB CD AB CD AB CD AB CD AB CD
*Apr 26 16:39:09.092: AB CD AB CD AB CD AB CD AB CD AB CD AB CD AB CD
*Apr 26 16:39:09.092: AB CD AB CD AB CD AB CD AB CD AB CD AB CD AB CD
*Apr 26 16:39:09.092: AB CD AB CD AB CD AB CD AB CD AB CD AB CD AB CD
```

- A. HDLC
- B. PPP
- C. Ethernet
- D. RFC 2427/RFC1490

Answer: D

2. What Q.931 message cannot be received in response to sending a Q.931 SETUP message?

- A. Alerting
- B. Call Proceeding
- C. Connect
- D. USER Information
- E. Progress

Answer: D

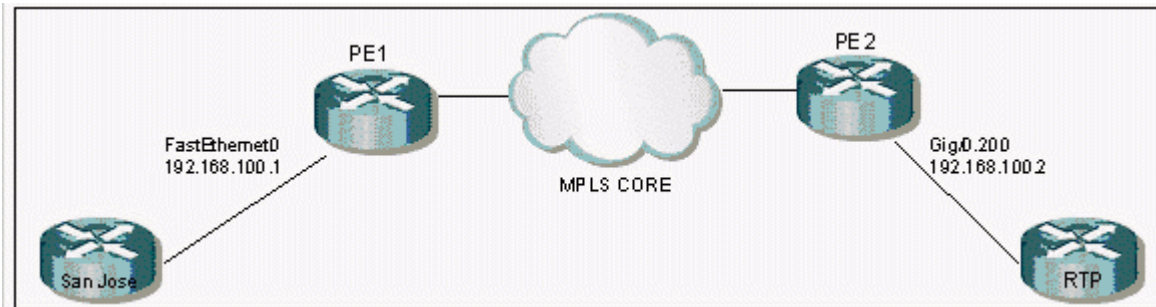
3. The Hold-Down Timer used in Distance Vector protocols:

- A. Sets the time limit of how long a router may keep a packet in its buffer, if the routing protocol is in the process of converging
- B. Determines the number of seconds a router will wait before sending another update to neighbor routers
- C. Sets a specific period for routers to neither accept nor advertise a route from a destination where an original route was recently lost

D. Sets a duration where routes are not accepted from the neighbor router that caused a routing loop

Answer: C

4. Click the Exhibit button. PE1 and PE2 are connected to the MPLS cloud. All MPLS labels from PE1 and PE2 are working. Observing the shown topology, will this scenario work?



- A. This scenario will not work because Gigabit Ethernet can't be connected to FastEthernet over MPLS.
- B. This scenario will work because the issues concerning Gigabit and FastEthernet over MPLS with default behavior should not make any difference.
- C. This scenario will not work because Gigabit usually has MTU over 9000 and FastEthernet 1500.
- D. This scenario will not work because one side has dot1q header and another side is in port mode.
- E. This scenario will work by configuring PWE Class using the Interworking feature. By default, the MTU on each side is 1500, so this is an acceptable solution.

Answer: E

5. Which do NOT exist?

- A. Per VLAN Spanning Tree (PVST).
- B. Per VLAN Spanning Tree Plus (PVST+).
- C. Per VLAN Spanning Tree Plus Plus (PVST++).
- D. Rapid STP (RSTP).
- E. Resilient STP (RSTP).

Answer: CE

6. Which commands are valid in ethernet or ethernet VLAN attachment circuits?

- A. match cos
- B. match ethernet cos

- C. match source-mac
- D. match vlan
- E. match ethernet multicast

Answer: AD

7. OSPF is defined on a Frame Relay interface providing point-to-multipoint connections. The remote neighbors can reach this central site, but are complaining of routing failures between each of the remote sites. The central router has all the routes for each remote site. Based on this information, what can be diagnosed as the biggest potential problem?

- A. An over-subscribed Frame Relay switch will cause some packet loss.
- B. There are problems in the use of OSPF Authentication.
- C. There is an incorrect selection of the Designated Router.
- D. There is an incorrect DLCI assigned on a point-to-point sub-interface.

Answer: C

8. EIGRP applies the principle of Feasible Successor (FS) in resolving a new path to a lost route. What statement regarding the FS is correct?

- A. Information is stored for the FS as part of the Link-State Routing updates forwarded for EIGRP.
- B. EIGRP estimates the FS from each neighbor for each network after an exchange of database information during the normal update process. It uses this information for path selection when a route is lost.
- C. When EIGRP is notified that a route is lost, it will always send requests to each neighbor for ways to reach the lost route. The neighbor that returns the best path will qualify as the FS.
- D. EIGRP nominates a central router as the FS for all lost routes during configuration.

Answer: B

9. What technology allows transporting Layer2 attachment circuits over IP-only backbones?

- A. GRE
- B. AToM
- C. L2TPv3

D. DLSW+

Answer: C

10. Which are supported ways of transporting ATM over MPLS?

A. AAL5 SDU VC Mode

B. AAL5 SDU VP Mode

C. Packet Cell Relay AAL5 Trunk Mode

D. Packed Cell Relay Trunk mode

E. AAL2oMPLS

Answer: AC

11. What IE is not mandatory in a Q.931 Service msg?

A. Bearer capability

B. Channel ID

C. Message Type

D. Change Status

E. Call Reference

Answer: A

12. Which statements are true regarding VPLS?

A. There is a full mesh of pseudowires.

B. There is a partial mesh of pseudowires.

C. Only L2TPv3 can be used for pseudowire establishment.

D. STP runs in the core.

E. There is split-horizon to avoid loops.

Answer: AE

13. How many bits does TCI contain?

A. 1

B. 3

- C. 6
- D. 12
- E. 16
- F. 20

Answer: E

14. What command is used for Interworking configuration?

- A. `interworking {etherner | ip}` in interface config mode.
- B. `interworking {etherner | ip}` in pseudowire-class config mode.
- C. `Interworking {bridged | routed}` in l2tp-class mode.
- D. `{ip | ethernet}Interworking` in pseudowire-class config mode.

Answer: B

15. A router is set to boot from flash, but cannot find boot commands in the configuration. Also, valid files do not exist in the default flash device. The router will:

- A. Boot from ROM, since there are no valid sources
- B. Try to boot from the network, using a default filename
- C. Terminate the boot process with an error message
- D. Try to boot from the network, then boot from ROM as a backup

Answer: D

16. What specification defines LACP?

- A. IEEE 802.11
- B. IEEE 802.1q and IEEE 802.1p
- C. IEEE 802.3ad
- D. ITU Q.922
- E. RFC2547

Answer: C

17. Estimating the MTU for EoMPLS Packets Edge MTU of 1500, Transport header, AToM header present, MPLS label, and stack MPLS Label, calculate the core MTU requirements to handle EoMPLS port mode

packets.

- A. 1518
- B. 1520
- C. 1524
- D. 1526

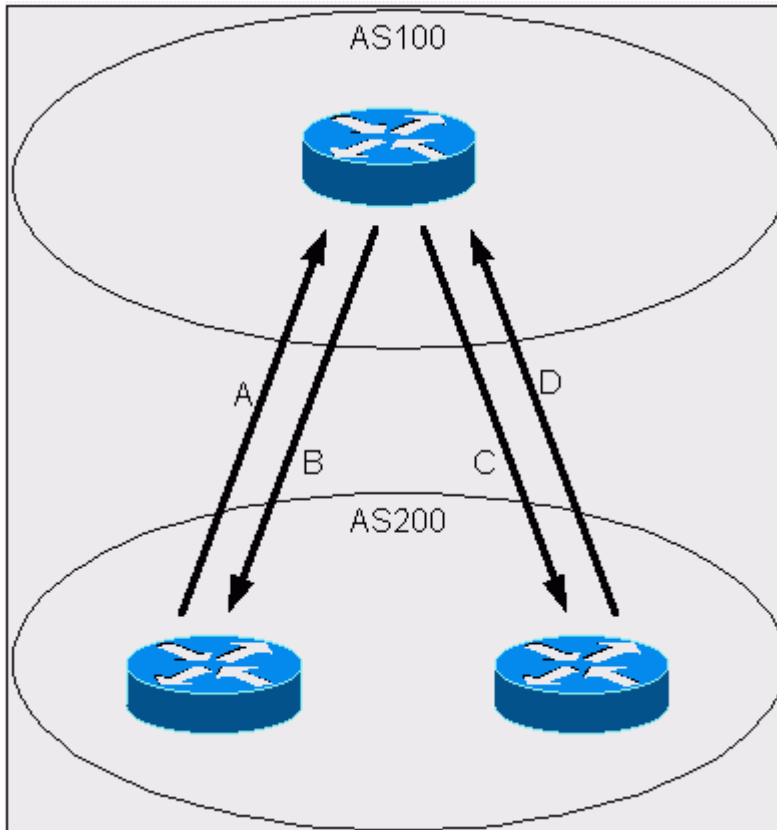
Answer: D

18. What protocol is not disabled by the 'no service tcp-small-servers' command?

- A. Echo
- B. Finger
- C. Chargen
- D. Discard
- E. Daytime

Answer: B

19. Click the Exhibit button to view the topology. According to the diagram, what attribute is initiated by AS200 (IBGP) to give preference to the path A or D traffic will take when going from AS200 to AS100? What attribute is initiated by AS200 (EBGP) to give preference to the path B or C traffic will take when going from AS100 to AS200?



- A. MED; Origin
- B. MED; Local Preference
- C. Community; Origin
- D. Local Preference; MED
- E. Origin; Community

Answer: D

20. Which are components of VPLS?

- A. BGP extensions
- B. Pseudowire technology
- C. LDP extensions
- D. Etherchannel technology
- E. MAC Address learning and forwarding on a virtual port

Answer: ABE

Visualexams.com was founded in 2006. The safer,easier way to help you pass any IT Certification exams . We provide high quality IT Certification exams practice questions and answers(Q&A). Especially Adobe, Apple, Citrix, Comptia, EMC, HP, HuaWei, LPI, Nortel, Oracle, SUN, Vmware and so on. And help you pass any IT Certification exams at the first try.

Web site: <http://www.visualexams.com>

You can reach us at any of the email addresses listed below.

E-Mail: [visualexams \(at\) hotmail.Com](mailto:visualexams@hotmail.com)