

**Exam : Cisco 350-020**

**Title : CCIE SP Optical  
Qualification Exam**

**Version : Demo**

## Important Note, Please Read Carefully

### Other VisualExams products

[All visualexams IT Exam Products](#)

### Our products of Offline Testing Engine

Use the offline Testing engine product to practice the questions in an exam environment.

Build a foundation of knowledge which will be useful also after passing the exam.

[visualexams Testing Engine](#)

### Latest Version

We are constantly reviewing our products. New material is added and old material is revised. Free updates are available for 90 days after the purchase. You should check your member zone at VisualExams and update 3-4 days before the scheduled exam date.

Here is the procedure to get the latest version:

1. Go to <http://www.visualexams.com/>
2. Log in the **User Center**
3. The latest versions of all purchased products are downloadable from here. Just click the links.

### Feedback

If you spot a possible improvement then please let us know. We always interested in improving product quality.

Feedback should be send to [Visualexams@hotmail.com](mailto:Visualexams@hotmail.com). You should include the following: Exam number, version, page number, question number, and your login Account.

Our experts will answer your mail promptly.

### Explanations

This product does not include explanations at the moment. If you are interested in providing explanations for this exam, please contact [Visualexams@hotmail.com](mailto:Visualexams@hotmail.com).

### Features

- Comprehensive questions with complete details
- Instant Downloadable in PDF form.
- Verified Answers Researched by Industry Experts
- Questions accompanied by exhibits.
- Drag and Drop questions as experienced in the Actual Exams.
- These questions and answers are backed by our GUARANTEE.
- Questions updated on regular basis.
- Like actual certification exams our product is in multiple-choice questions (MCQs)

**Commitment to Your Success: At VisualTestExam.com, we are committed to you ongoing success. Our exams and questions are constantly being updated and compared to industry standards.**

Want to earn a Microsoft certification like MCSE, MCSE 2003, CCNA, CCNP? Thinking about getting an A+ or CCSP?

A, CCSP or Network+ Certification with less effort and time. You will be astonished at the theoretical and practical knowledge you will acquire in such a short period of time using our Certification Training Products. Our Study material will enable you to pass your Microsoft, Your Cisco and any other certification on the very first attempt.

## **Guarantee**

Visualexams provides the most competitive quality of all exams for the customers, we guarantee your success at the first attempt with only our Certification Question&Answers, if somehow you do not pass the exam at the first time, we will not only arrange FULL REFUND for you, but also provide you another exam of your claim, ABSOLUTELY FREE!

1. What IE is not mandatory in a Q.931 Service msg?

- A. Bearer capability
- B. Channel ID
- C. Message Type
- D. Change Status
- E. Call Reference

**Answer: A**

2. The purpose of Administrative Distance, as used by Cisco routers, is:

- A. To choose between routes from different routing protocols when receiving updates for the same network
- B. To identify which routing protocol forwarded the update
- C. To define the distance to the destination used in deciding the best path
- D. To be used only for administrative purposes

**Answer: A**

3. What is the maximum PMD value of a 100km fiber segment if the cable is specified with 0.5ps/km ?  
(worst case)?

- A. 0.005ps
- B. .05ps
- C. 5ps
- D. 50ps
- E. 500ps

**Answer: C**

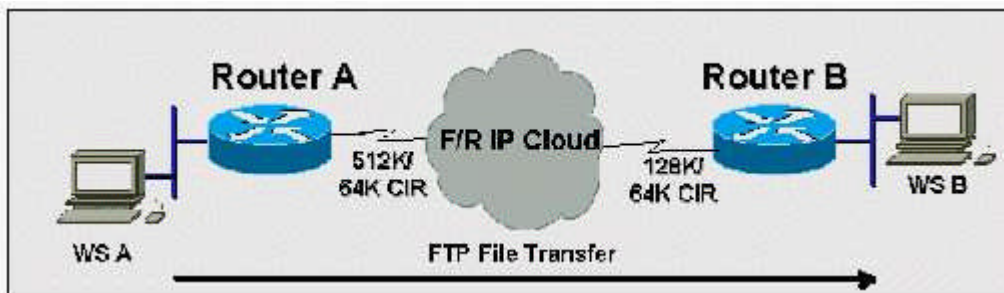
4. What is the equivalent of 50 GHz spacing in DWDM in terms of nm?

- A. 1.6 nm
- B. 0.8 nm
- C. 0.4 nm
- D. 0.2 nm

**Answer: C**

5. Click the Exhibit to view the topology.

Router A has a 512K-access port into the frame relay cloud. Router B has 128K-access port into the frame relay cloud. The two routers are connected with symmetrical PVCs that are configured for 64K committed information rate (CIR). What Frame Relay Traffic Shaping map-class sub-command should be entered on Router A to prevent workstation A from overrunning the access port on Router B?



- A. frame-relay traffic-rate 128000 512000
- B. frame-relay traffic-rate 64000 512000
- C. frame-relay traffic-rate 512000 64000
- D. frame-relay traffic-rate 128000 64000
- E. frame-relay traffic-rate 64000 128000

**Answer: E**

6. If a host sends a TCP segment with the RST flag set, it means:

- A. The receiver should send all data in the reassembly buffer to the application receiving it immediately.
- B. The receiver should reset the session.
- C. Any routers between the source and destination hosts should reset the state of the connection in their buffers.
- D. The receiver should make certain its send buffer is pushed onto the wire.

**Answer: B**

7. How many E1 channels can STM-1 frame transport?

- A. 7
- B. 21
- C. 63
- D. 84

**Answer: C**

8. BGP can implement a policy of 'Route Dampening' to control route instability. What statement about route dampening is NOT correct?

- A. A numeric penalty is applied to a route each time it flaps.
- B. The penalty is exponentially decayed according to parameters, such as half-life-time.
- C. The history of unstable routes is forwarded back to the sender to control future updates.
- D. The route is eventually suppressed based on a configurable 'suppress limit'.

**Answer: C**

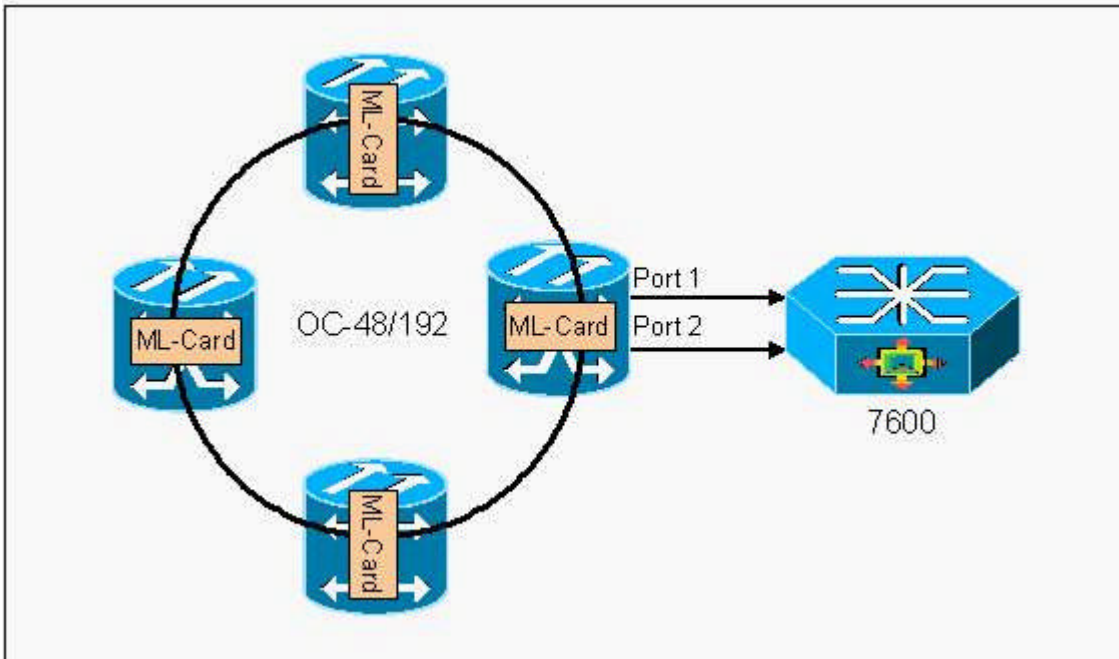
9. MPLS traffic engineering data is carried by:

- A. Opaque LSAs or IS-IS TLVs
- B. BGP MEDs
- C. RTP or RTCP packets
- D. MBGP

**Answer: A**

10. Click the Exhibit button.

In the diagram, if a resilient packet ring (RPR) is built between ML-series cards, \_\_\_\_ restoration exists on the ring, while the redundant connections to the 7609 rely on \_\_\_\_ protection.



- A. 50 ms, STP
- B. STP, STP
- C. STP, 1+1 APS
- D. 50ms, 50ms

**Answer: A**

11. How many E-1s can be aggregated (maximum) and mapped into a VC-12 Signal?

- A. 1
- B. 7
- C. 14
- D. 28
- E. 32

**Answer: A**

12. What is Fast EtherChannel?

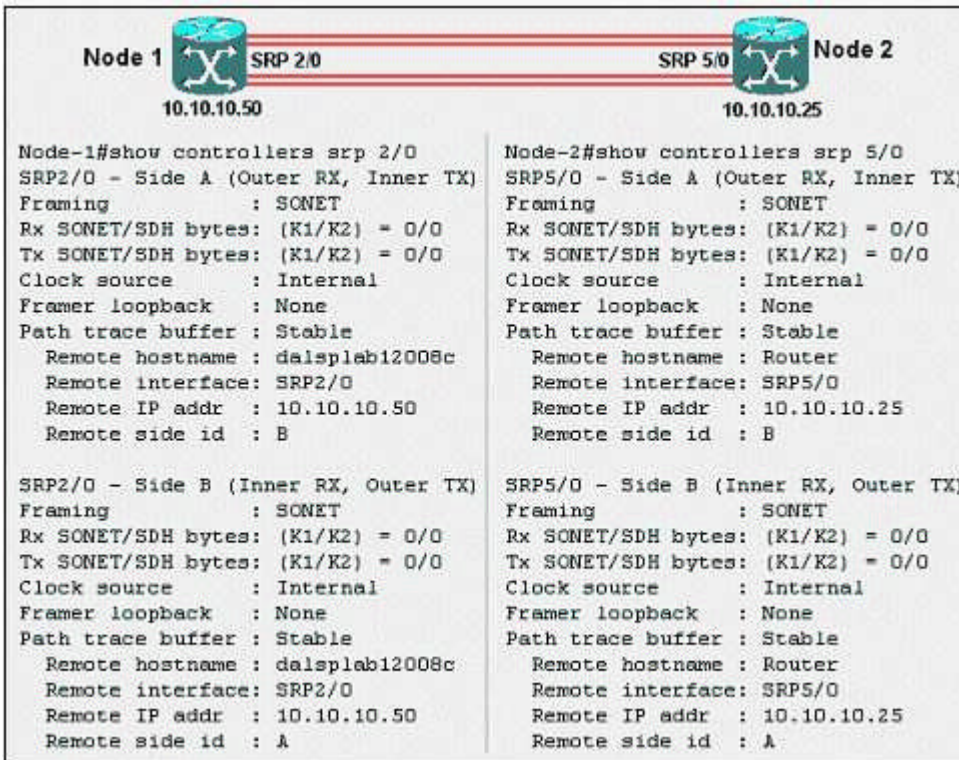
- A. A feature to bundle multiple Ethernet point-to-point links quickly into one logical high speed link
- B. A feature to bundle multiple Fast-Ethernet point-to-point links into one logical high speed link
- C. Another name for full-duplex Fast Ethernet
- D. Another name for Gigabit Ethernet

E. None of the above

**Answer: B**

13. Click the Exhibit button.

A customer has improperly installed a 2-node OC-12 SRP ring using dark fiber. Based on the printout from each node shown in the exhibit, what is the problem?

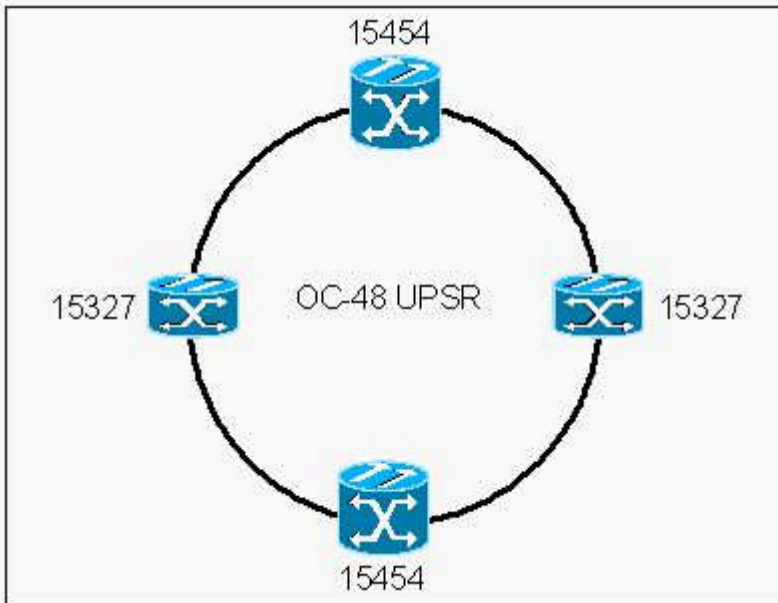


- A. Misconfigured timing
- B. Single faulty span or fiber between nodes
- C. A-B side SRP interfaces are fiber-looped on each node
- D. A-B side TX-TX and RX-RX fibers connected between nodes
- E. A-A and B-B side SRP interfaces connected between nodes

**Answer: C**

14. Click the Exhibit button.

Which are the two possible circuit sizes for an E-series shared packet ring in the network shown in the exhibit?



- A. STS-1
- B. STS-3c
- C. STS-6c
- D. STS-9c
- E. STS-12c

**Answer: AB**

15. Click the Exhibit button to view the configuration.

Upon deleting an IOS image file from flash, an execution of show flash shows the file still in flash, with a 'D' preceding it (as shown in the exhibit). What step must be taken in order to remove the file completely?

```

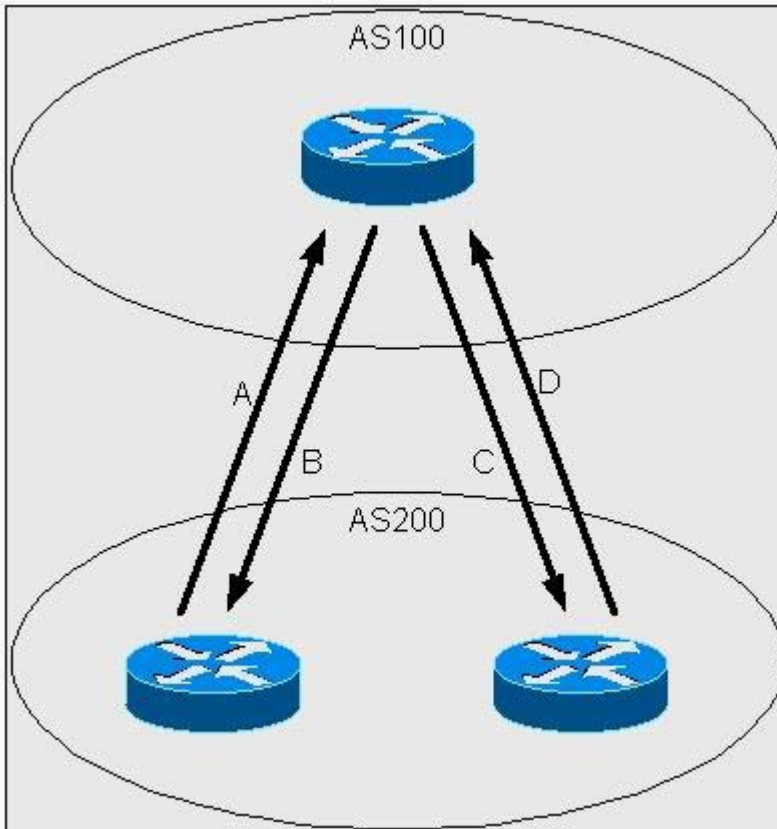
stillab-8510>sh bootflash
-#- ED --type-- --crc--- -seek-- nlen -length- -----date/time----- name
 1  .. unknown 9DA13DA5 3576AC 31 3241516 Aug 22 1998 08:34:22 cat8510c-in
 2  .D unknown 8CDE134F 453BA3 22 2494584 Jul 20 1997 09:33:02 cat8510b-in
  
```

- A. Erase the file from flash
- B. Format the flash device
- C. Replace the flash card - it is defective
- D. Execute a squeeze command on the flash device

**Answer: D**

16. Click the Exhibit button to view the topology.

According to the diagram, what attribute is initiated by AS200 (IBGP) to give preference to the path A or D traffic will take when going from AS200 to AS100 . What attribute is initiated by AS200 (EBGP) to give preference to the path B or C traffic will take when going from AS100 to AS200?



- A. MED; Origin
- B. MED; Local Preference
- C. Community; Origin
- D. Local Preference; MED
- E. Origin; Community

**Answer: D**

17. Which three events might you diagnose as the cause of a line switching event?

- A. Loss of signal and frame
- B. Line AIS (all ones in STS pointer)
- C. Routine exercises
- D. Excessive signaling messages

- E. Excessive bit errors in overhead
- F. Switched photon elements

**Answer:** ABE

18. While entering commands on a console, the break key is pressed accidentally and the router reboots. What action could disable this problem?

- A. In configuration mode, enter disable break.
- B. In configuration mode, enter no service break.
- C. Change the configuration register.
- D. Replace the router - this is an invalid response to pressing the break key when past 60 seconds after boot.

**Answer:** C

19. What is NOT an ATM class of service?

- A. CBR
- B. VBR-t
- C. ABR
- D. UBR
- E. CAR

**Answer:** E

20. What describes a technique, used to encapsulate voice (NOT data) over ATM?

- A. RFC 1483
- B. LANE
- C. AAL-1
- D. RFC 1577

**Answer:** C

Visualexams.com was founded in 2006. The safer,easier way to help you pass any IT Certification exams . We provide high quality IT Certification exams practice questions and answers(Q&A). Especially Adobe, Apple, Citrix, Comptia, EMC, HP, HuaWei, LPI, Nortel, Oracle, SUN, Vmware and so on. And help you pass any IT Certification exams at the first try.

Web site: <http://www.visualexams.com>

You can reach us at any of the email addresses listed below.

E-Mail: [visualexams \(at\) hotmail.Com](mailto:visualexams@hotmail.com)