

**Exam : Novell 050-895**

**Title : Novell eDirectory Design  
and Implementation:  
eDirectory 8.8**

**Version : Demo**

## Important Note, Please Read Carefully

### Other VisualExams products

[All visualexams IT Exam Products](#)

### Our products of Offline Testing Engine

Use the offline Testing engine product to practice the questions in an exam environment.

Build a foundation of knowledge which will be useful also after passing the exam.

[visualexams Testing Engine](#)

### Latest Version

We are constantly reviewing our products. New material is added and old material is revised. Free updates are available for 90 days after the purchase. You should check your member zone at VisualExams and update 3-4 days before the scheduled exam date.

Here is the procedure to get the latest version:

1. Go to <http://www.visualexams.com/>
2. Log in the **User Center**
3. The latest versions of all purchased products are downloadable from here. Just click the links.

### Feedback

If you spot a possible improvement then please let us know. We always interested in improving product quality.

Feedback should be send to [Visualexams@hotmail.com](mailto:Visualexams@hotmail.com). You should include the following: Exam number, version, page number, question number, and your login Account.

Our experts will answer your mail promptly.

### Explanations

This product does not include explanations at the moment. If you are interested in providing explanations for this exam, please contact [Visualexams@hotmail.com](mailto:Visualexams@hotmail.com).

### Features

- Comprehensive questions with complete details
- Instant Downloadable in PDF form.
- Verified Answers Researched by Industry Experts
- Questions accompanied by exhibits.
- Drag and Drop questions as experienced in the Actual Exams.
- These questions and answers are backed by our GUARANTEE.
- Questions updated on regular basis.
- Like actual certification exams our product is in multiple-choice questions (MCQs)

**Commitment to Your Success: At VisualTestExam.com, we are committed to you ongoing success. Our exams and questions are constantly being updated and compared to industry standards.**

Want to earn a Microsoft certification like MCSE, MCSE 2003, CCNA, CCNP? Thinking about getting an A+ or CCSP?

A, CCSP or Network+ Certification with less effort and time. You will be astonished at the theoretical and practical knowledge you will acquire in such a short period of time using our Certification Training Products. Our Study material will enable you to pass your Microsoft, Your Cisco and any other certification on the very first attempt.

## **Guarantee**

Visualexams provides the most competitive quality of all exams for the customers, we guarantee your success at the first attempt with only our Certification Question&Answers, if somehow you do not pass the exam at the first time, we will not only arrange FULL REFUND for you, but also provide you another exam of your claim, ABSOLUTELY FREE!

1. Which replica type contains only the partition root object?

- A. Master
- B. Read-only
- C. Read/write
- D. Filtered replica
- E. Subordinate reference

**Answer: E**

2. Which statements are true regarding the placement of eDirectory objects? (Choose 2.)

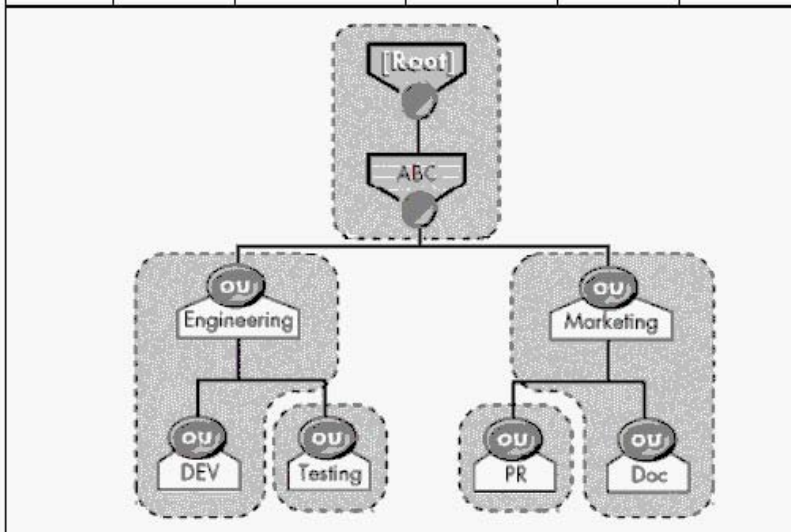
- A. Place application objects in their own container.
- B. Don't place user objects near the top of the tree.
- C. If possible, don't place objects deep within a tree.
- D. If possible, don't place server objects within the same container.
- E. Server objects should be placed near the user objects they are servicing.

**Answer: CE**

3. Examine the exhibit by clicking the Exhibit button.

How many subordinate references will exist in this tree?

Server	[Root]	Engineering	Marketing	Testing	PR
Serv1	Master	Master	Master	Master	Master
Serv2	R/W		R/W		
Serv3		R/W		R/W	
Serv4	R/W				R/W
Serv5	R/W		R/W		
Serv6	R/W	R/W			



- A. 3
- B. 5

- C. 6
- D. 7
- E. 8
- F. 9
- G. 12

**Answer: E**

4. Which of the following is most important to consider when designing the upper layers of an eDirectory tree?

- A. Time synchronization strategy
- B. Number of objects in the tree
- C. Number of servers in the tree
- D. Physical network infrastructure
- E. Number of partitions and replicas

**Answer: D**

5. What is the most important design consideration when designing the upper layers of an eDirectory tree?

- A. Partition and replica plan
- B. Time synchronization strategy
- C. Number of objects in the tree
- D. Number of servers in the tree
- E. Physical network infrastructure

**Answer: E**

6. What is a part of analyzing user needs when creating an accessibility needs analysis document?

- A. Design a strategy for mobile users.
- B. Specify ZENworks object configurations.
- C. Specify security rights to particular objects.
- D. Gather information related to physical network resource needs.
- E. Create guidelines that determine how eDirectory objects are used to create the user environment.

**Answer: D**

7. What tasks are helpful in completing a needs analysis when designing an eDirectory tree? (Choose 2.)

- A. Gather information about network connectivity
- B. Gather information about resources that users access
- C. Gather information to decide on a replica placement strategy
- D. Gather information to estimate the time for each phase of design
- E. Gather information to decide which server should be the time provider

**Answer: AB**

8. Which statement is true about eDirectory partitions?

- A. Partitions can overlap each other.
- B. A container object can reside in 2 partitions.
- C. A partition provides fault tolerance for the file system.
- D. Partitions are logical divisions of eDirectory that enable the database to be divided among several servers.

**Answer: D**

9. Which statement is true regarding the Priority Sync feature?

- A. Priority Sync is supported only between two or more eDirectory 8.8 servers hosting any partition.
- B. Priority Sync is supported only between two or more eDirectory 8.8 servers hosting the root partition.
- C. Priority Sync is supported only between two or more eDirectory 8.8 servers hosting the same partition.
- D. Priority Sync is supported only between two or more eDirectory 8.8 servers hosting parent or child partitions.

**Answer: C**

10. Which statement is true regarding the function-based design for the upper layers of your eDirectory tree?

- A. It is the best design type to handle future growth.
- B. It should be used if there is a WAN in the network.
- C. It is best for small networks that do not span more than one location.
- D. It is a more difficult type of design for the upper layers of your tree.
- E. It should be used if there are multiple organization objects in the tree.

**Answer: C**

11. You have just created an eDirectory tree and installed 3 servers into the tree. The tree has one partition. Server1, Server2, and Server3 were installed into the Corp container. Server2 crashed and you removed it from the tree before you installed additional servers. The additional servers installed in the tree were Server4, Server5, Server6, and Server7. Server4 and Server5 were installed into the Prod container. Server6 and Server7 were installed into the Acct container. The Corp, Prod, and Acct containers are children of the tree root. The servers were placed in the tree in the following order: Server4, Server5, Server6, Server7.

You haven't had the chance to manually add replicas to any server. Which servers hold replicas?

- A. Server1 and Server3
- B. Server1, Server3, and Server4
- C. Server1, Server3, Server4, and Server6
- D. Server1, Server3, Server4, and Server5
- E. Server1, Server3, Server6, and Server7

F. Server1, Server3, Server4, Server5, Server6, and Server7

**Answer: B**

12. When developing a User Environment plan, what is the next step after you create a User Accessibility Needs document?

- A. Design the lower layers of the eDirectory tree
- B. Design the upper layers of the eDirectory tree
- C. Create an Administrative Strategies document
- D. Create an Accessibilities Guidelines document
- E. Create an eDirectory Naming Standards document

**Answer: D**

13. When designing the upper layers of the eDirectory tree, the location-based design should generally be used when the network spans more than one building or location. Which are exceptions of using a location-based design? (Choose 2.)

- A. The majority of printers are at one location.
- B. There are high speed and highly reliable WAN lines.
- C. The servers at remote locations hold only one replica.
- D. The servers at other locations are secondary time servers.
- E. The network exists at one location and there are no plans to expand to other locations.

**Answer: BE**

14. You are the network administrator for your company and are designing the upper layers of your eDirectory tree. There are 2500 users and 30 servers located at 5 sites connected by a WAN. Which design is ideal for this type of network?

- A. Function-based design
- B. Location-based design
- C. Combination-based design
- D. Single organizational unit-based design

**Answer: B**

15. Which is an advantage of having only one organization object in the tree?

- A. It allows the tree to need only one partition.
- B. It provides easier implementation of time synchronization.
- C. It meets the requirement of one organization object per [Root] object.
- D. It allows for more efficient partition synchronization between servers.
- E. It allows for the configuration of changes that apply to the whole company from one location.

**Answer: E**

Visualexams.com was founded in 2006. The safer,easier way to help you pass any IT Certification exams . We provide high quality IT Certification exams practice questions and answers(Q&A). Especially Adobe, Apple, Citrix, Comptia, EMC, HP, HuaWei, LPI, Nortel, Oracle, SUN, Vmware and so on. And help you pass any IT Certification exams at the first try.

Web site: <http://www.visualexams.com>

You can reach us at any of the email addresses listed below.

E-Mail: [visualexams \(at\) hotmail.Com](mailto:visualexams@hotmail.com)