

Exam : IBM 000-807

**Title : Test807, Web Services Dev
for IBM WebSphere App
Server V6.1**

Version : Demo

Important Note, Please Read Carefully

Other VisualExams products

[All visual exams IT Exam Products](#)

Our products of Offline Testing Engine

Use the offline Testing engine product to practice the questions in an exam environment.

Build a foundation of knowledge which will be useful also after passing the exam.

[visual exams Testing Engine](#)

Latest Version

We are constantly reviewing our products. New material is added and old material is revised. Free updates are available for 90 days after the purchase. You should check your member zone at VisualExams and update 3-4 days before the scheduled exam date.

Here is the procedure to get the latest version:

1. Go to <http://www.visual exams.com/>
2. Log in the **User Center**
3. The latest versions of all purchased products are downloadable from here. Just click the links.

Feedback

If you spot a possible improvement then please let us know. We always interested in improving product quality.

Feedback should be send to Visual exams@hotmail.com. You should include the following: Exam number, version, page number, question number, and your login Account.

Our experts will answer your mail promptly.

Explanations

This product does not include explanations at the moment. If you are interested in providing explanations for this exam, please contact Visual exams@hotmail.com.

Features

- Comprehensive questions with complete details
- Instant Downloadable in PDF form.
- Verified Answers Researched by Industry Experts
- Questions accompanied by exhibits.
- Drag and Drop questions as experienced in the Actual Exams.
- These questions and answers are backed by our GUARANTEE.
- Questions updated on regular basis.
- Like actual certification exams our product is in multiple-choice questions (MCQs)

Commitment to Your Success: At VisualTestExam.com, we are committed to you ongoing success. Our exams and questions are constantly being updated and compared to industry standards.

Want to earn a Microsoft certification like MCSE, MCSE 2003, CCNA, CCNP? Thinking about getting an A+ or CCSP?

A, CCSP or Network+ Certification with less effort and time. You will be astonished at the theoretical and practical knowledge you will acquire in such a short period of time using our Certification Training Products. Our Study material will enable you to pass your Microsoft, Your Cisco and any other certification on the very first attempt.

Guarantee

Visualexams provides the most competitive quality of all exams for the customers, we guarantee your success at the first attempt with only our Certification Question&Answers, if somehow you do not pass the exam at the first time, we will not only arrange FULL REFUND for you, but also provide you another exam of your claim, ABSOLUTELY FREE!

1. Which task can the `_setProperty` method in the `javax.xml.rpc.Stub` interface be used to perform?

- A. To configure the document style in the SOAP message
- B. To change the parameter of a Web service operation
- C. To modify the target service endpoint address
- D. To enable Transport Level Security (TLS)

Answer: C

2. WSDL faults are mapped to which three Java classes?

- A. `javax.wsdl.WSDLFault`
- B. `javax.wsdl.WSDLException`
- C. `java.rmi.RemoteException`
- D. `javax.xml.rpc.handler.Exception`
- E. `javax.xml.rpc.soap.SOAPFaultException`
- F. Service-specific Java exception

Answer: CEF

3. Which describes a Java return type for a Java method?

- A. `<wsdl:message>`
- B. `<wsdl:part>`
- C. `<wsdl:output>`
- D. `<wsdl:fault>`

Answer: C

4. Which interface in SAAJ generically represents any literal part in a SOAP message?

- A. `javax.xml.soap.Text`
- B. `javax.xml.soap.Node`
- C. `javax.xml.soap.DetailEntry`
- D. `javax.xml.soap.SOAPElement`
- E. `javax.xml.soap.SOAPBodyElement`

Answer: D

5. Which is NOT a prerequisite for a service implementation defined in a Session EJB Web service?

- A. The Session EJB must have a default public constructor.
- B. The remote interface of the Session EJB must implement the endpoint interface.
- C. The Session EJB must have a default EJB create method.
- D. The Session EJB must have one or more remote methods.

Answer: B

6. What is out of scope for the JSR 921 specification?

- A. SOAP 1.1 and SOAP with Attachments (SwA)

- B. WSDL 1.1
- C. UDDI 1.0
- D. Basic reliable message semantics

Answer: D

7. By default, which security token type does WebSphere Application Server V6.1 NOT support?

- A. username token
- B. binary security token, including the X.509 certificate
- C. LTPA token
- D. Kerberos token

Answer: D

8. Which three are WS-Security wizards in Rational Application Developer V7.0?

- A. Add XML Encryption
- B. Add XML Signature
- C. Add WS Federation
- D. Add WS Secure Conversation
- E. Add WS Security Policy
- F. Add Stand Alone Security Token
- G. Add SAML Support

Answer: ABF

9. In WebSphere Application Server V6.1, 'trust method' is part of which collection?

- A. Required Integrity
- B. Required Confidentiality
- C. Required security token
- D. Caller
- E. Add time stamp

Answer: D

10. Which server-side configuration task should be performed to reduce the chances of a replay attack?

- A. Add a binary security token in the Request Generator Configuration -> Security Token section
- B. Require a timestamp in the Request Consumer Configuration -> Add Timestamp section
- C. Add a nonce word to encrypted parts, through the Request Generator Configuration -> Confidentiality section
- D. Require a nonce word in digital signatures, through the Request Consumer Configuration -> Required Integrity section

Answer: D

11. In addition to usernametoken and digestvalue, which other predefined keywords are supported by

WebSphere Application Server for encryption?

- A. bodycontent
- B. body
- C. timestamp
- D. passwordtoken

Answer: A

12. In which scenario should Web service traffic be secured at the transport level over the message level?

- A. Security information must be kept intact from the client to the Web service, regardless of the underlying transport.
- B. Messages are passed between multiple intermediaries, multiple transports.
- C. Only parts of the message need to be kept confidential.
- D. High performance and security are top concerns.

Answer: D

13. What is the output of the Bean2WebService tool?

- A. A Service Endpoint Interface (SEI) file
- B. An EAR file
- C. A WSDL file
- D. web.xml and webservices.xml files

Answer: B

14. In a top-down creation of a Web service, what does the WSDL portType map to?

- A. A Java method invocation
- B. A Stateless session EJB
- C. A JAX-RPC mapping
- D. A Service Endpoint Interface (SEI)

Answer: D

15. Which command line utility can be use to create a Web service using a bottom-up approach?

- A. Java2WSDL
- B. WSDL2Java
- C. Java2WS
- D. XML2WSDL

Answer: A

16. Several methods have been proposed for supporting binary data in Web services. Which method is effectively obsolete at this point?

- A. Base 64 Encoding
- B. SOAP with Attachments (SwA)

- C. WS-Attachments with Direct Internet Message Encapsulation (DIME)
- D. Message Transmission Optimization Mechanism (MTOM)

Answer: C

17. What are the prerequisites for creating a Web service from an EJB using SOAP/HTTP transport in Rational Application Developer V7.0?

A. Create an EAR project

Create an EJB project and add it to the EAR project

Create or import an enterprise bean into the EJB project

Deploy the enterprise bean

Create an EJB router project

B. Create an EAR project

Create an EJB project and add it to the EAR project

Create or import an enterprise bean into the EJB project

C. Create an EJB project

Create or import an enterprise bean into the EJB project

Deploy the enterprise bean

Create a Web project

D. Create an EAR project

Create an EJB project and add it to the EAR project

Create or import an enterprise bean into the EJB project

Create an EJB router project

Deploy the router project

Answer: B

18. When creating an EJB Web service using the WSDL2Java command, what must be included on the command line?

A. type ejb

B. implementation ejb

C. container ejb

D. create ejb

Answer: C

19. For the following SOAP fault, which is a mandatory field that contains a human-readable description of the fault occurred?

```
<SOAP-ENV:Fault xmlns="">
```

```
<faultcode> value1 </faultcode>
```

```
<faultstring> value2 </faultstring>
```

```
<faultfactor> value3 </faultfactor>
<detail>
<e:faultNod xmlns:e="http://faultNod">
<e:message> value4 </e:message>
<e:errorCode> value5 </errorCode>
</e:faultNod>
</detail>
</SOAP-ENV:Fault>
```

- A. value1
- B. value2
- C. value3
- D. value4
- E. value5

Answer: B

20. The following WSDL snippet represents which message transmission style?

```
<wsdl:portType .... >
<wsdl:operation name="someOperation">
<wsdl:output name="oname" message="somenam" />
<wsdl:input name="iname" message="anothername" />
</wsdl:operation>
</wsdl:portType .... >
```

- A. One-way
- B. Request-response
- C. Solicit-response
- D. Notification

Answer: C

21. Which two are valid SOAP messages?

```
A. <soap:Envelope xmlns:soap="http://schemas.xmlsoap.org/soap/envelope/" >
<soap:Header>...</soap:Header>
<soap:Body>...</soap:Body>
</soap:Envelope>
B. <soap:Envelope xmlns:soap="http://schemas.xmlsoap.org/soap/envelope/" >
<soap:Body>...</soap:Body>
<soap:Header>...</soap:Header>
</soap:Envelope>
```

- C. <soap:Envelope xmlns:soap="http://schemas.xmlsoap.org/soap/envelope/" >
<soap:Header>...</soap:Header>
</soap:Envelope>
- D. <soap:Envelope xmlns:soap="http://schemas.xmlsoap.org/soap/envelope/" >
<soap:Body>...</soap:Body>
</soap:Envelope>
- E. <soap:Envelope xmlns:soap="http://schemas.xmlsoap.org/soap/envelope/" > </soap:Envelope>

Answer: AD

22. Which are three valid clientType options for the WSDL2Client command?

- A. java
- B. application
- C. EJB
- D. EJBclient
- E. servlet
- F. webclient

Answer: BCE

23. A developer has a WSDL file open in the WSDL Editor. Another developer sends out notification that the DTD referenced in the WSDL file has changed. Which action, if any, should be taken to ensure that the schema changes are enforced?

- A. Problems tab > Quick fix
- B. WSDL Editor > Reload Dependencies
- C. On the popup menu for the element that was changed, select the File > Update option
- D. No action is needed since the WSDL Editor will detect the schema changes automatically.

Answer: B

24. What is the purpose of specifying a namespace when creating a WSDL file?

- A. To point to the XML Schema to use to validate the WSDL file
- B. To avoid name collisions when referencing elements
- C. To uniquely identify a company's URI
- D. To allow Rational Application Developer V7.0 to create a WSDL skeleton for the new file

Answer: B

25. From which method is the proxy of Service obtained in the Dynamic Proxy client?

- A. getPort()
- B. getQName()
- C. getPortType()
- D. getService()

Answer: A

26. Which client retrieves Call Instance from the javax.xml.rpc.Call interface?

- A. Managed static stub
- B. Unmanaged static stub
- C. Unmanaged dynamic proxy
- D. Dynamic Invocation Interface

Answer: D

27. The code below is typical of which type of client?

```
WeatherForecastServiceLocator wsloc = new WeatherForecastServiceLocator();  
WeatherForecastService wserv= (WeatherForecastService) wsloc.getWeather();  
  
//Invoke the Web service  
  
String temp = wserv.getTemperature();  
System.out.println(temp);
```

- A. Dynamic proxy
- B. Static stub
- C. Dynamic Invocation Interface
- D. Service Data Object

Answer: B

28. Which type of client is least used in the WebSphere Application Server 6.1 environment?

- A. Unmanaged static stub
- B. Unmanaged dynamic proxy
- C. Managed Dynamic Invocation Interface
- D. Managed dynamic proxy

Answer: C

29. Which database management systems will the Web Service User-Defined Function wizard work for?

- A. Apache Derby 10.2.2.0
- B. DB2 for Z/OS 9.1
- C. Oracle 10g Release 1
- D. DB2 UDB for Linux 8.1.2

Answer: D

30. What is the least appropriate scenario for Web services?

- A. To integrate legacy systems
- B. For B2B (business to business) applications
- C. To help with process choreography
- D. To tightly couple internal systems

Answer: D

31. Which Web service transport should be used to ensure message delivery?

- A. SOAP/HTTP
- B. SOAP/JMS
- C. RMI/JMS
- D. RMI/IIOP

Answer: B

32. How can a developer ensure that a fault will occur if a service does not recognize a transaction number included in a SOAP header?

- A. Set the faultCode value to soap:Transaction
- B. Include a detail element containing application-specific elements according to the XML Schema
- C. Include a mustUnderstand attribute for the transaction number
- D. Include a Fault element in the SOAP message

Answer: C

33. Which are core characteristics of SOA and Web services?

- A. Loose coupling, PKI and location transparency
- B. Encapsulation, loose coupling and reuse
- C. Composable, editable logic and discoverable
- D. Configurable bindings, message oriented and reliable

Answer: B

34. Which is NOT a valid Web service transaction?

- A. Durable 2 phase transaction
- B. Volatile 2 phase transaction
- C. Complete transaction
- D. Activate transaction

Answer: D

35. The Simple SOAP Binding Profile mandates that a message must serialize the envelope according to which specification?

- A. XML 1.0
- B. WSDL 1.1
- C. SOAP 1.1
- D. HTTP 1.0

Answer: A

36. Which two statements are correct about SOAP?

- A. Parameters for a service invocation are contained in the message header.

- B. Namespaces are not used for performance reasons.
- C. SOAP uses XML Schema to define the envelope structure.
- D. The SOAP Message element is the top-most element of the SOAP document.
- E. SMTP and JMS can be used to transport SOAP messages.

Answer: CE

37. What is SOAP?

- A. It is an XML document that specifies the location and methods of a Web service.
- B. It is a protocol for exchanging XML-based messages over a network.
- C. It is a platform-independent XML-based registry to locate Web services.
- D. It is a description of constraints on the structure and content of an XML document.

Answer: B

38. An application using SOAP RPC encoding experiences poor performance at high message volumes. What can a developer do to improve this performance?

- A. Turn off marshalling
- B. Redesign to use more granular messaging
- C. Use binary encoding
- D. Use document-style encoding
- E. Use RPC-literal encoding

Answer: DE

39. Which message encoding should a developer use to ensure the highest level of interoperability?

- A. RPC/encoded
- B. RPC/literal
- C. Document/encoded
- D. Document/literal

Answer: D

40. What is a benefit of breaking a WSDL file into multiple files?

- A. To comply with the SOAP standards
- B. To make the service interface visible to client software
- C. To allow tooling such as Rational Application Developer V7.0 to work with the WSDL
- D. To separate the implementation definition from the interface to make maintenance easier

Answer: D

41. The following methods are to be published as Web services to be invoked via SOAP messages and validated with a schema:

```
public void myMethod(int x, float y);  
public void myMethod(int x);
```

```
public void someOtherMethod(int x, float y);
```

Which WSDL style should be used?

- A. RPC/encoded
- B. RPC/literal
- C. Document/encoded
- D. Document/literal
- E. Document/literal wrapped

Answer: B

42. In Rational Application Developer V7.0, which setting ensures that SOAP message attachments adhere to the appropriate WS-I profile?

- A. In the project preferences, change the WS-I AP compliance level to "require compliance"
- B. In the project preferences, change the WS-I BSP compliance level to "require compliance"
- C. In the workbench preferences, change the WS-I SSBP compliance level to "require compliance"
- D. In the workbench preferences, change the WS-I AP compliance level to "require compliance"

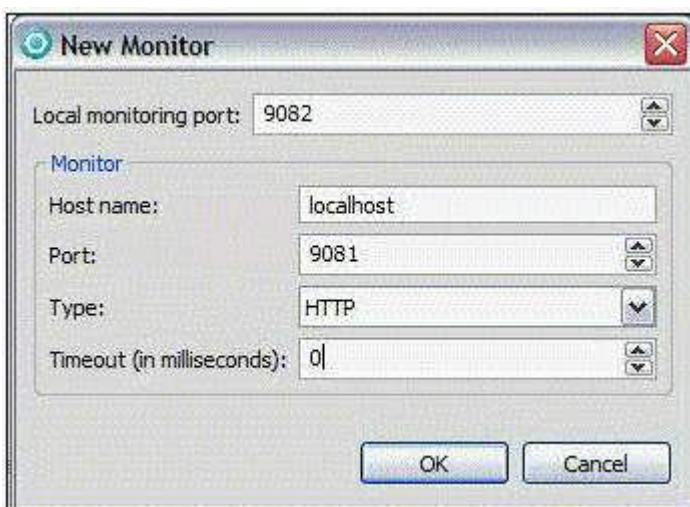
Answer: D

43. The Universal Test Client (UTC) is only compatible with Web service clients deployed on which platform?

- A. Stand alone clients
- B. Apache Axis
- C. IBM WebSphere Application Server
- D. WebLogic Application Server

Answer: C

44. Refer to the exhibit. A Weather Web service is configured under the WeatherBeanWeb context. From the diagram in the exhibit, what is the correct URI for TCP/IP Monitor to work?



- A. <http://localhost:8080/WeatherBeanWeb/services/Weather>

- B. <http://localhost:9080/WeatherBeanWeb/services/Weather>
- C. <http://localhost:9081/WeatherBeanWeb/services/Weather>
- D. <http://localhost:9082/WeatherBeanWeb/services/Weather>

Answer: D

45. What is Universal Test Client (UTC) mainly used to test?

- A. Connection pooling
- B. JNDI Properties
- C. EJBs
- D. ESBs

Answer: C

46. Which mode of testing can be used to test only SOAP/HTTP?

- A. WSDL Explorer
- B. Web Services Explorer
- C. Web services sample test JSPs
- D. Manually written client code

Answer: B

47. Given the two UDDI publication formats supported by the Web Services Explorer (Simple and Advanced), which parameters are available for the Simple publication format?

- A. Publish URL, User ID, Password, Name and Description
- B. Inquiry URL, User ID, Password and Name
- C. Publish URL, Name and Description
- D. Publish URL, User ID, Password, Name, Description and tModel Category(ies)

Answer: A

48. Which element defines the logical name of the reference used by JNDI to lookup the service reference?

- A. <service-interface-name>
- B. <service-qname>
- C. <service-interface>
- D. <service-ref-name>

Answer: D

49. Which transport settings does the Create Router Modules wizard allow to be selected?

- A. HTTP only
- B. JMS only
- C. Both HTTP and JMS
- D. HTTP, HTTPS and JMS

Answer: C

50. Which descriptor can be used to configure Handlers under the JSR 921: Implementing Enterprise Web Services 1.1 specification?

- A. application.xml
- B. webservices.xml
- C. webservicesclient.xml
- D. ejb.xml

Answer: B

51. In an EJB-JAR file, the webservices.xml file for EJB Web services must be packaged in which directory?

- A. META-INF
- B. WEB-INF
- C. wsdl
- D. webservices

Answer: A

52. In J2EE version 1.3, for a Web service client in a Web project, deployment information is stored in the webservicesclient.xml file. In J2EE version 1.4, where is the same deployment information stored?

- A. webservices.xml
- B. webservicesclient.xml
- C. web.xml
- D. ibm-webservices-bnd.xmi

Answer: C

53. Which command line tool adds HTTP and JMS Routers to an EAR file with existing Web services?

- A. SoapEarEnabler.bat
- B. EJB2WebService.bat
- C. EAR2WebService.bat
- D. WebServiceEnabler.bat

Answer: A

54. Which three protocols can the Endpoint Listeners in the SI Bus of WebSphere Application Server be configured to get invoked with?

- A. SOAP/JMS
- B. SOAP/HTTPS
- C. SOAP/SMTP
- D. SOAP/HTTP
- E. RMI/IIOP
- F. RMI/JRMP

Answer: ABD

55. Caching may be done for a Web service provider or a Web service client. For a Web service client, what must the "class" element in the cachespec.xml be set to?

- A. webservice
- B. webserviceClient
- C. JAXRPCClient
- D. WSCient

Answer: C

56. In WebSphere Application Server V6.1, why is the use of WS-Security Draft 13 discouraged?

- A. It is not complete yet.
- B. It is deprecated.
- C. It is still a defacto standard.
- D. It is complete but being enhanced.

Answer: B

57. For integrity and confidentiality, WebSphere Application Server provides two types of selection of the SOAP elements to be signed or encrypted:

- A. predefined keyword based selection.
- B. XPATH selection.
- C. SOAP Header selection.
- D. deployment descriptor selection.
- E. SOAP Body selection.

Answer: AB

58. To implement a custom security token, a user has to prepare which four classes?

- A. com.ibm.wsspi.wssecurity.token.TokenGenerator,
javax.security.auth.callback.CallbackHandler,
com.ibm.wsspi.wssecurity.token.TokenConsumer,
javax.security.auth.spi.LoginModule
- B. com.ibm.wsspi.wssecurity.token.TokenGeneratorComponent,
javax.security.auth.callback.CallbackHandler,
com.ibm.wsspi.wssecurity.token.TokenConsumerComponent,
javax.security.auth.spi.LoginModule
- C. com.ibm.wsspi.wssecurity.token.TokenGeneratorComponent,
javax.security.auth.callback.CallbackHandlerComponent,
com.ibm.wsspi.wssecurity.token.TokenConsumerComponent,
javax.security.auth.spi.LoginModule

D. com.ibm.wsspi.wssecurity.token.TokenGeneratorComponent,
javax.security.auth.callback.CallbackHandlerComponent,
com.ibm.wsspi.wssecurity.token.TokenConsumerComponent,
javax.security.auth.spi.LoginModuleComponent

Answer: B

59. What is the difference between the Web service binding and Web service extension XMI files?

- A. The binding file specifies how to apply security measures; the extension file specifies which security measures to apply.
- B. The binding file specifies which security measures to apply; the extension file specifies how to apply security measures.
- C. The binding file specifies router modules; the extension file specifies the router module name and the default endpoint URI prefixes.
- D. The binding file specifies required confidentiality and integrity; the extension file specifies the trust anchor and certificate store list.

Answer: A

60. Which statement is NOT true for specifying elements as a target of signing and encryption?

- A. "body" is a type of keyword for signing SOAP body element.
- B. XPath expression is used for custom target which cannot be defined through keyword.
- C. "bodycontent" is a type of keyword for encrypting contents of SOAP body element.
- D. "signature" is a type of keyword for signing the entire digital signature.

Answer: D

61. What is the purpose of the LTPA token in a Web service environment?

- A. To authenticate a user in a WebSphere Application Server security domain
- B. To create a trust association between WebSphere Application Server security and third-party security servers
- C. To authenticate the identity of a client within a domain
- D. To propagate the identity of an authenticated user within a WebSphere Application Server domain

Answer: D

62. What does the Web Service User-Defined Function wizard provide the ability to do?

- A. Create WSDL files that describe User-Defined Functions
- B. Generate Web services Java bean skeletons for User-Defined Functions
- C. Create User-Defined Functions that invoke Web services
- D. Create RPC Router that expose User-Defined Functions

Answer: C

63. When the Web service target is not expected to change, which client should be used?

- A. Managed dynamic proxy
- B. Unmanaged static stub
- C. Unmanaged dynamic proxy
- D. Dynamic Invocation Interface

Answer: B

64. For which JAX-RPC client is the proxy stub retrieved during runtime?

- A. Static stub
- B. Dynamic proxy
- C. Dynamic Invocation Interface
- D. Clients which use the javax.xml.rpc.Call instances

Answer: B

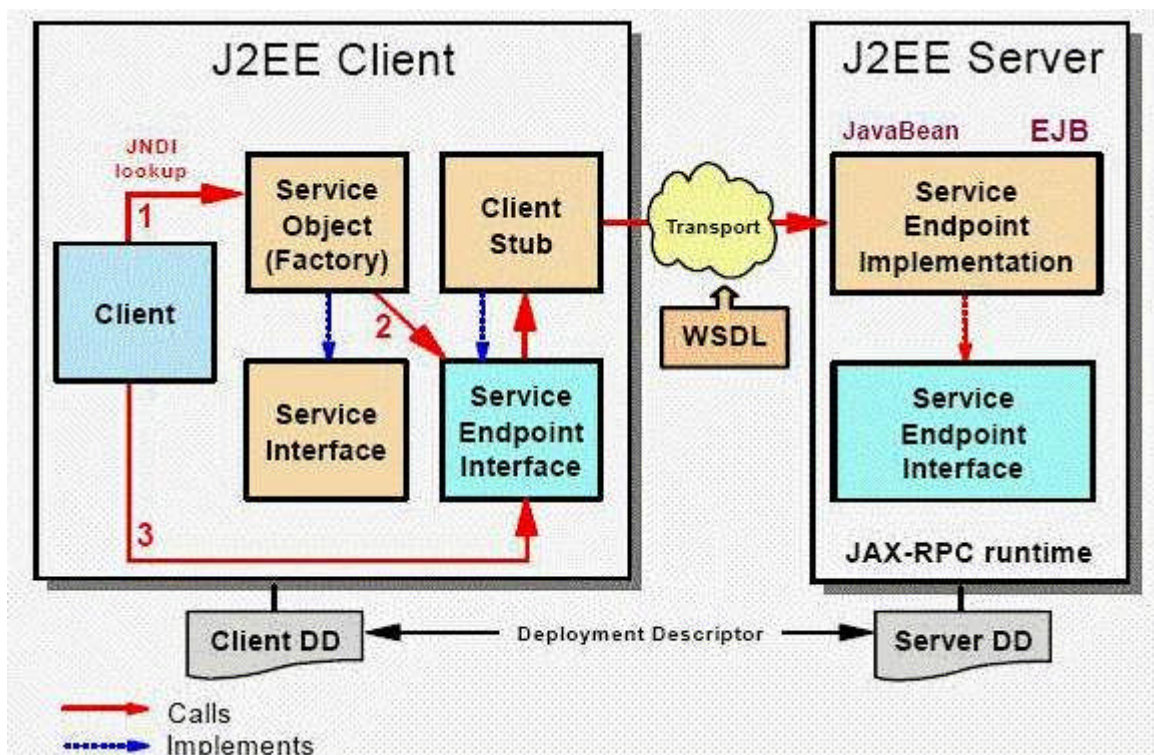
65. When the Web service target is expected to change considerably in terms of its location and Request/Response format, which clients should be used?

- A. Managed dynamic proxy
- B. Unmanaged static stub
- C. Unmanaged dynamic proxy
- D. Dynamic Invocation Interface

Answer: D

66. Refer to the exhibit.

The exhibit is a typical invocation technique of which type of client?



- A. ServiceFactory
- B. Dynamic proxy
- C. Dynamic Invocation Interface client
- D. Static stub

Answer: D

67. What is the standard name for the JAX-RPC mapping file?

- A. mapping.xml
- B. wsdl_mapping.xml
- C. webservices.xml
- D. There is no standard.

Answer: D

68. Which descriptor has been removed from the JSR 921: Implementing Enterprise Web Services 1.1 specification?

- A. web.xml
- B. webservices.xml
- C. webclient.xml
- D. webservicesclient.xml

Answer: D

69. If the plan is to create an Endpoint Listener in a SI Bus to be invoked with SOAP/JMS protocol, what is one prerequisite that should be created before?

- A. Queue Connection Factory
- B. Queue
- C. Topic
- D. JMS Providers

Answer: A

70. When using EJB as a Web service, the Web services deployment descriptor must be placed under which directory?

- A. Java Source
- B. classes
- C. WEB-INF
- D. META-INF

Answer: D

71. What does the Web Services Explorer search form support searches for?

- A. businessEntities (Businesses), businessServices (Services) and tModels (Service Interfaces)
- B. businessServices (Services) and tModels (Service Interfaces)

- C. businessServices (Services), tModels (Service Interfaces) and businessCategory (Service Categories)
- D. businessEntities (Businesses), businessServices (Services), tModels (Service Interfaces) and businessCategory (Service Categories)

Answer: A

72. Which Web service-specific cache ID component provides the finest grained cache ID's?

- A. SOAPEnvelope
- B. SOAPAction
- C. serviceOperation
- D. serviceOperation-Parameter

Answer: D

73. Which is a complete list of the containers that J2EE Web services can be deployed to?

- A. Web
- B. EJB
- C. Web and EJB
- D. JCA, EJB and Web

Answer: C

74. To create a router module, which artifact should be selected in Rational Application Developer V7.0 to invoke the wizard?

- A. An application.xml file, a webservices.xml file and an ejb-jar.xml file
- B. An application.xml file, a webservices.xml file and a web.xml file
- C. An application.xml file, a webservicesclient.xml file and a web.xml file
- D. An application.xml file, the EJB remote interface and an ejb-jar.xml file

Answer: A

75. Which element in a WSDL document maps to a parameter in a Java method signature?

- A. <wsdl:message>
- B. <wsdl:part>
- C. <wsdl:input>
- D. <wsdl:param>

Answer: B

76. Which rule is correct about the Service Endpoint Interface (SEI)?

- A. The interface may extend java.rmi.Remote.
- B. The interface may use Holder class as method parameters.
- C. Every interface method in interface may throw java.rmi.RemoteException.
- D. The interface definition can use any Java type.

Answer: B

77. What is the primary reason to use Multiprotocol binding?

- A. When performance is a key concern
- B. When Web service clients need to support WS-Transaction
- C. When Web service clients need to participate in security realms
- D. When interoperability is a concern

Answer: A

78. When mapping from WSDL to Java, which artifact is a wsdl:portType mapped to?

- A. Service binding stub
- B. Service port interface
- C. Service endpoint interface
- D. Platform specific service interface

Answer: C

79. Which scenario is NOT supported by the JSR 921?

- A. Handlers must be able to transform parts within the SOAP message body.
- B. Handlers must be able to re-target a request to a different component.
- C. Handlers must be able to transform the SOAP message header.
- D. Handlers must be able to just read a message where no additions, transformations, or modifications to the message is made.

Answer: B

80. Which statement is true about SAAJ?

- A. It is an XML standard for exchanging authentication and authorization data between security domains.
- B. It is used for SOAP messaging, providing a standard way to send XML documents over the Internet.
- C. It is an XML standard for exchanging user, resource and service provisioning information.
- D. It aims to create a simple extension of SOAP to allow for asynchronous or long-running Web services.

Answer: B

81. Which statement about SOA and Web services is true?

- A. Web service can be made from existing EJBs and Java Beans only, others will have to be defined from scratch.
- B. CORBA/IIOP and RMI/JRMP are valid protocols in SOA.
- C. An Enterprise Application will not conform to SOA if it is using RMI/IIOP.
- D. Web services will have to replace the existing services.

Answer: B

82. What do SOAP messages use to pass through firewalls?

- A. MQ binding
- B. IIOP

- C. HTTP tunneling
- D. SSH tunneling

Answer: C

83. Which statement most accurately reflects the relationship between SOA and Web services?

- A. Web services are an architectural strategy which can be used to implement an SOA.
- B. SOA is an architectural strategy and Web services can be used to implement an SOA.
- C. SOA and Web services are the same thing.
- D. SOA is used to build architectural reference models and Web services are used to build operational models.

Answer: B

84. Inside the EJB Deployment Descriptor in Rational Application Developer V7.0 under the Beans section is the parameter Transaction Type Required. The bean is configured to participate in:

- A. Atomic transaction when invoking a Web service.
- B. Atomic transaction when implementing a Web service.
- C. Business Activity transaction when invoking a Web service.
- D. Business Activity transaction when implementing a Web service.

Answer: B

85. Which Web service transport should be used in Publish/Subscribe model?

- A. SOAP/HTTP
- B. SOAP/JMS
- C. RMI/JMS
- D. RMI/IIOP

Answer: B

86. What will improve the performance of SOAP-based Web services?

- A. Use document-style encoding
- B. Use fine-grained Web services
- C. Add message level security
- D. Avoid stale data in the UDDI registry by turning off caching

Answer: A

87. Which WSDL style is suited to sending binary tree nodes as part of a SOAP message?

- A. RPC/encoded
- B. RPC/literal
- C. Document/encoded
- D. Document/literal
- E. Document/literal wrapped

Answer: A

88. What effect does using SOAP with Attachments (SwA) have on interoperability?

- A. WS-I specifications cannot be applied.
- B. .NET Web services cannot be used.
- C. SOAP message payloads cannot be binary.
- D. SOAP message payloads cannot be encoded.

Answer: B

89. Which specification provides recommendations on the use of encodings to maximize interoperability?

- A. Basic Profile 1.1
- B. SAAJ V1.2
- C. WS-Coordination
- D. JAX-RPC V1.0

Answer: A

90. How are Web services located dynamically?

- A. By using the Web services Basic Profile to query a service database
- B. By searching a database using JDBC and the Web service name
- C. By looking up UDDI files in a WSDL registry
- D. By searching a registry using an API such as JAXR

Answer: D

91. What must be included in a SOAP fault message when an error occurs due to a value in the message Body element?

- A. A fault string element with a value of "Body"
- B. A detail element
- C. A Body fault code
- D. An application-specific fault code

Answer: B

92. What is WSDL?

- A. It is an XML document that specifies the location and methods of a Web service.
- B. It is a protocol for exchanging XML-based messages over a network.
- C. It is a platform-independent XML-based registry to locate Web services.
- D. It is a description of constraints on the structure and content of an XML document.

Answer: A

93. Which method has interoperability issues since it was never supported by Microsoft?

- A. Base 64 Encoding
- B. SOAP with Attachments (SwA)

- C. WS-Attachments with Direct Internet Message Encapsulation (DIME)
- D. Message Transmission Optimization Mechanism (MTOM)

Answer: B

94. When using the document literal wrapped style, what is the corresponding WSDL snippet for the following SOAP message snippet?

```
<soapenv:body>  
<p:convertTemp xmlns:p="http://service">  
<temprature> 30 </temprature>  
</p:convertTemp>  
</soapenv:body>
```

- A. <wsdl:service name="convertTemp" ... > ... </wsdl:service>
- B. <wsdl:message name="convertTemp" ...> ... </wsdl:message>
- C. <wsdl:port name="convertTemp" ...> ... </wsdl:port>
- D. <wsdl:operation name="convertTemp" ...> ...</wsdl:operation>
- E. <wsdl:input name="convertTemp" ... > ... </wsdl:input>

Answer: D

95. Which tool can be used to create router projects?

- A. WSDL2Java.bat
- B. SoapActionRouter.bat
- C. Application Server Toolkit V6.1
- D. WasService.bat

Answer: C

96. Which tasks can the Rational Application Developer V7.0 Web Services wizard perform when creating bottom-up Web services?

- A. Create a Web service
- Deploy a Web service
- Test a Web service
- Publish a Web service
- Generate a Java bean proxy
- Generate a sample application
- B. Create a Web service
- Deploy a Web service
- Test a Web service
- Publish a Web service
- Generate a sample application

C. Create a Web service

Deploy a Web service

Test a Web service

Generate a Java bean proxy

Generate a sample application

D. Create a Web service

Deploy a Web service

Test a Web service

Answer: A

97. When is top-down Web services development typically used?

A. The service implementation already exists but has no interface.

B. The business application already exists.

C. The service is defined but does not exist.

D. The application requires a J2EE implementation model.

Answer: C

98. Which WSDL element groups a set of endpoints or ports?

A. wsdl:types

B. wsdl:message

C. wsdl:portType

D. wsdl:service

E. wsdl:binding

Answer: D

99. When does a developer have to take action to ensure that a WSDL file is valid?

A. Whenever a WSDL file is generated by the WSDL wizard

B. When the WS-I Compliance preference is set

C. After importing a WSDL file

D. When the WSDL Validator is set to run automatically

Answer: C

100. Which two values can the type argument of the WSDL2WebService command have?

A. Bean

B. DADX

C. RPC

D. EJB

E. UDF

Answer: AD

101. In a scenario which requires the ability to manipulate SOAP messages directly, which custom binding might be used to bypass the JAX-RPC type mappings?

- A. SDO
- B. RMI mapping
- C. Direct EJB binding
- D. WSDL Bindings

Answer: A

102. In the WSDL editor, how can a developer create a new message for an operation input?

- A. 1. In the Graph view, right-click on space below the message column
- 2. Select New -> Message
- 3. Provide the name of the new message and click OK
- B. 1. In the Design view, right-click on the input message under the operation table
- 2. Select Set Message -> New Message
- 3. Provide the name of the new message and click OK
- C. 1. In the Design view, select the input message under the operation table
- 2. Click on the Add message icon in the tool bar
- 3. Provide the name of the new message and click OK
- D. 1. In the Graph view, right-click on the name of the input message
- 2. Select New -> Message
- 3. Provide the name of the new message and click OK

Answer: B

103. Which two service artifacts are generated by the Rational Application Developer V7.0 wizard when creating a bottom-up Java bean Web service?

- A. New Java beans
- B. Service Endpoint Interface (SEI)
- C. WSDL
- D. webservicesclient.xml
- E. application.xml

Answer: BC

104. The following WSDL snippet represents which message transmission style?

```
<wsdl:portType .... >
<wsdl:operation name="someOperation">
<wsdl:input name="iname" message="qname"/>
</wsdl:operation>
</wsdl:portType .... >
```

- A. One-way
- B. Request-response
- C. Solicit-response
- D. Notification

Answer: A

105. What can be used to test and publish Web services to IBM UDDI?

- A. Universal Test Client (UTC)
- B. Web Services Explorer
- C. IBM UDDI Test Registry
- D. Web services sample test JSPs

Answer: B

106. Which is a utility method in the sample test JSPs?

- A. setJNDI
- B. getJNDI
- C. setEndpoint
- D. useEndpoint

Answer: C

107. Which Rational Application Developer V7.0 tool can be used to validate the SOAP messages against WS-I standards?

- A. Bean2WebService
- B. WSDL2WebService
- C. TCP/IP Monitor
- D. Profiling Monitor

Answer: C

108. Which type of Web service enabled EJBs can be tested using Universal Test Client (UTC)?

- A. Message Driven Beans
- B. Stateful Session Beans
- C. Entity Beans
- D. Stateless Session Beans

Answer: D

109. How can a TCP/IP Monitor be created?

- A. By running the tcpmon command on the TCP/IP server
- B. From Rational Application Developer Tool : Windows -> Preferences -> Run/Debug -> TCP/IP Monitor
- C. From Rational Application Developer Tool: Windows -> Preferences -> Internet -> TCP/IP Monitor
- D. From Rational Application Developer Tool: Windows -> Preferences -> Web Services -> TCP/IP Monitor

Answer: B

110. For a Web service, in which deployment descriptor are Handlers described?

- A. webservices.xml
- B. web.xml
- C. application.xml
- D. ibm-webservices-bnd.xml

Answer: A

Visualexams.com was founded in 2006. The safer,easier way to help you pass any IT Certification exams . We provide high quality IT Certification exams practice questions and answers(Q&A). Especially Adobe, Apple, Citrix, Comptia, EMC, HP, HuaWei, LPI, Nortel, Oracle, SUN, Vmware and so on. And help you pass any IT Certification exams at the first try.

Web site: <http://www.visualexams.com>

You can reach us at any of the email addresses listed below.

E-Mail: [visualexams \(at\) hotmail.Com](mailto:visualexams@hotmail.com)